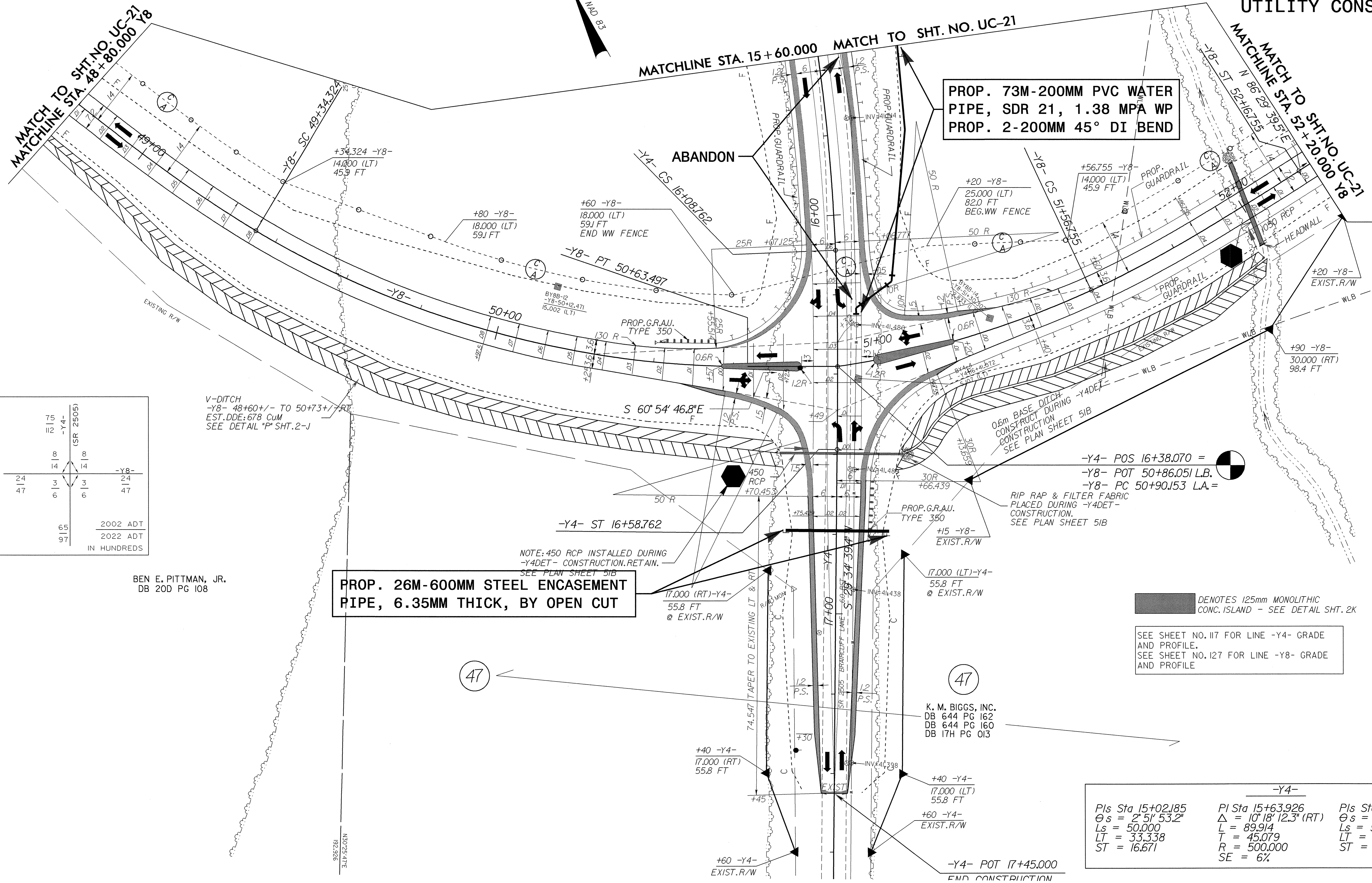


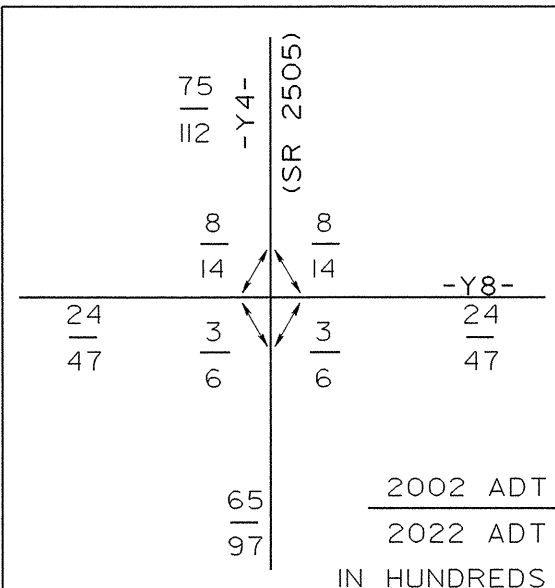
PROJECT REFERENCE NO.	SHEET NO.
R-513C	UC-22
DESIGNED BY: CSG	
DRAWN BY: CSG	
CHECKED BY: RBW	
APPROVED BY: RBW	
REVISED:	
NORTH CAROLINA DEPARTMENT OF TRANSPORTATION DESIGN SERVICES UNIT PHONE: (919) 250-4128 FAX: (919) 250-4119	

UTILITY CONSTRUCTION



PROP. 73M-200MM PVC WATER PIPE, SDR 21, 1.38 MPA WP
 PROP. 2-200MM 45° DI BEND

PROP. 26M-600MM STEEL ENCASMENT PIPE, 6.35MM THICK, BY OPEN CUT



V-DITCH
 -Y8- 48+60 +/- TO 50+73 +/- RT
 EST. DDE: 678 CUM
 SEE DETAIL *P* SHT. 2-J

BEN E. PITTMAN, JR.
 DB 20D PG 108

47

47

-Y4-		
Pls Sta 15+02.185	Pls Sta 15+63.926	Pls Sta 16+25.432
$\Delta s = 2' 51'' 53.2''$	$\Delta = 10' 18'' 12.3''$ (RT)	$\Delta s = 2' 51'' 53.2''$
$L_s = 50.000$	$L = 89.914$	$L_s = 50.000$
$LT = 33.338$	$T = 45.079$	$LT = 33.338$
$ST = 16.671$	$R = 500.000$	$ST = 16.671$
	$SE = 6\%$	