

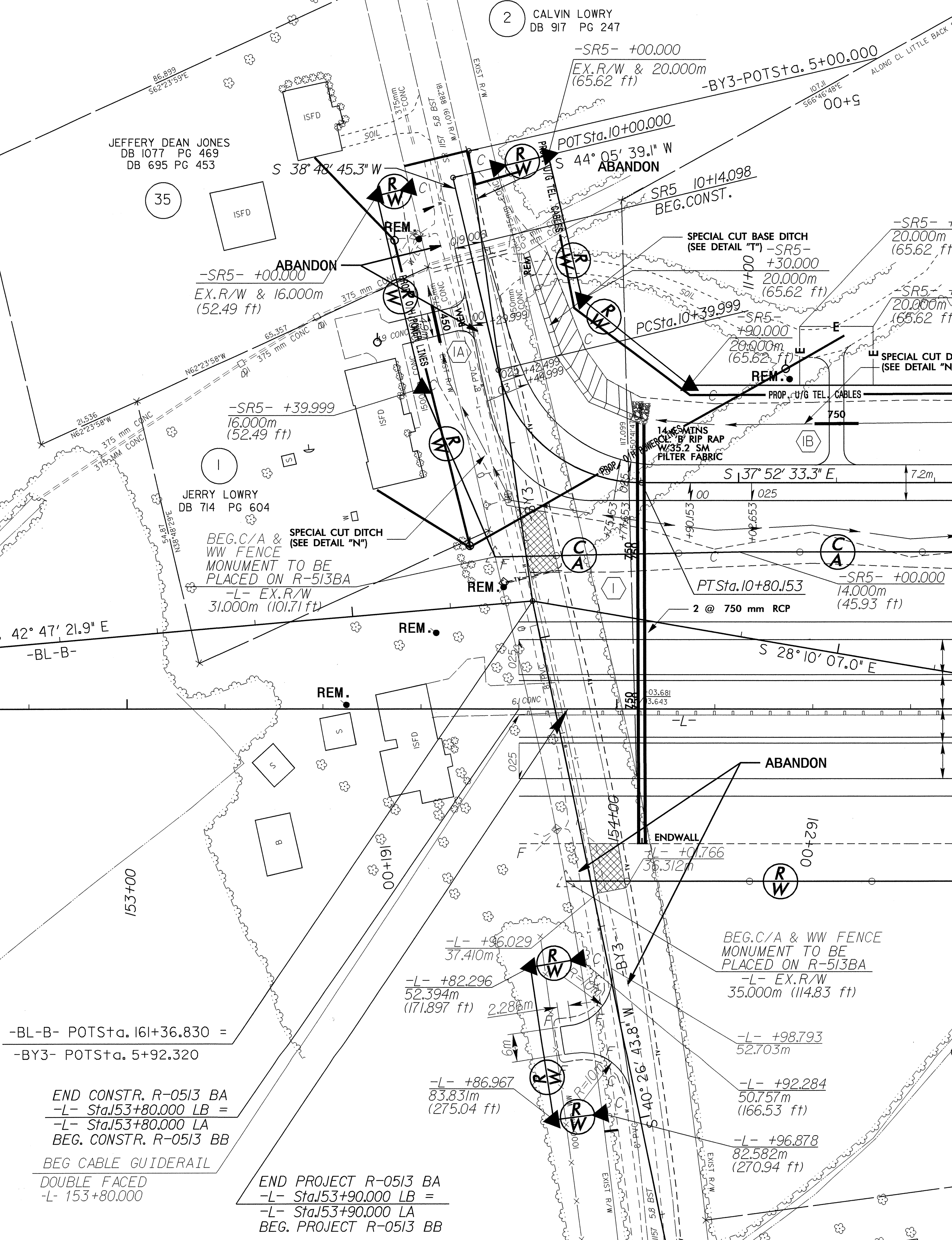
UTILITIES BY OTHERS

NOTE:  
ALL PROPOSED UTILITY WORK  
SHOWN ON THIS SHEET WILL  
BE DONE BY OTHERS

SEE SHEET 33 FOR -L- PROFILE  
SEE SHEET 53 FOR -SR5- PROFILE  
SEE SHEET 2-C FOR SR5 TIE CONST.  
DIMENSIONS

**DATUM DESCRIPTION**  
THE LOCALIZED COORDINATE SYSTEM DEVELOPED FOR THIS PROJECT IS BASED ON THE STATE PLANE COORDINATES ESTABLISHED BY NCGS FOR MONUMENT "WYE 1977"  
WITH NAD 83 STATE PLANE GRID COORDINATES OF NORTHING: 103917.867(m) EASTING: 585865.569(m)  
THE AVERAGE COMBINED GRID FACTOR USED ON THIS PROJECT (GROUND TO GRID) IS: 0.99992600  
THE N.C. LAMBERT GRID BEARING LOCALIZED HORIZONTAL GROUND DISTANCE FROM "WYE 1977" TO -L- STATION 153+90.000 IS S 27° 47' 54.7" E 818.814m  
ALL LINEAR DIMENSIONS ARE LOCALIZED HORIZONTAL DISTANCES  
VERTICAL DATUM USED IS NGVD 29

-SR5-  
PI Sta 10+63.729  
 $\Delta = 76^\circ 41' 18.5" (LT)$   
L = 40.154  
T = 23.730  
R = 30.000  
SE = 0.030  
RUNOFF = 15m



CALVIN LOWRY  
DB 917 PG 247

JEFFERY DEAN JONES  
DB 1077 PG 469  
DB 695 PG 453

JERRY LOWRY  
DB 714 PG 604

ETHEL LOWRY  
DB 1057 PG 633

ETHEL LOWRY  
DB 1057 PG 633

END CONSTR. R-0513 BA  
-L- Sta 153+80.000 LB =  
-L- Sta 153+80.000 LA  
BEG. CONSTR. R-0513 BB  
BEG CABLE GUIDERAIL  
DOUBLE FACED  
-L- 153+80.000

END PROJECT R-0513 BA  
-L- Sta 153+90.000 LB =  
-L- Sta 153+90.000 LA  
BEG. PROJECT R-0513 BB

MATCHLINE -L- STA 155+60.000 MATCH SHT. UO-5

24 FEB 2004 15:31 R:\projects\1011153ba\1011153ba.dwg User: jh555 21 05274555