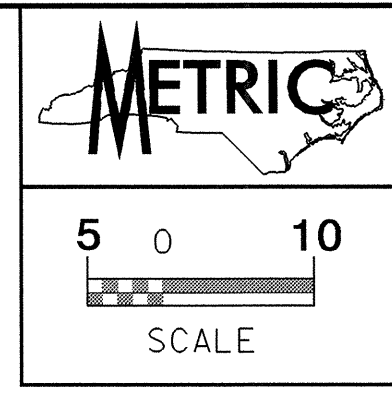


04257



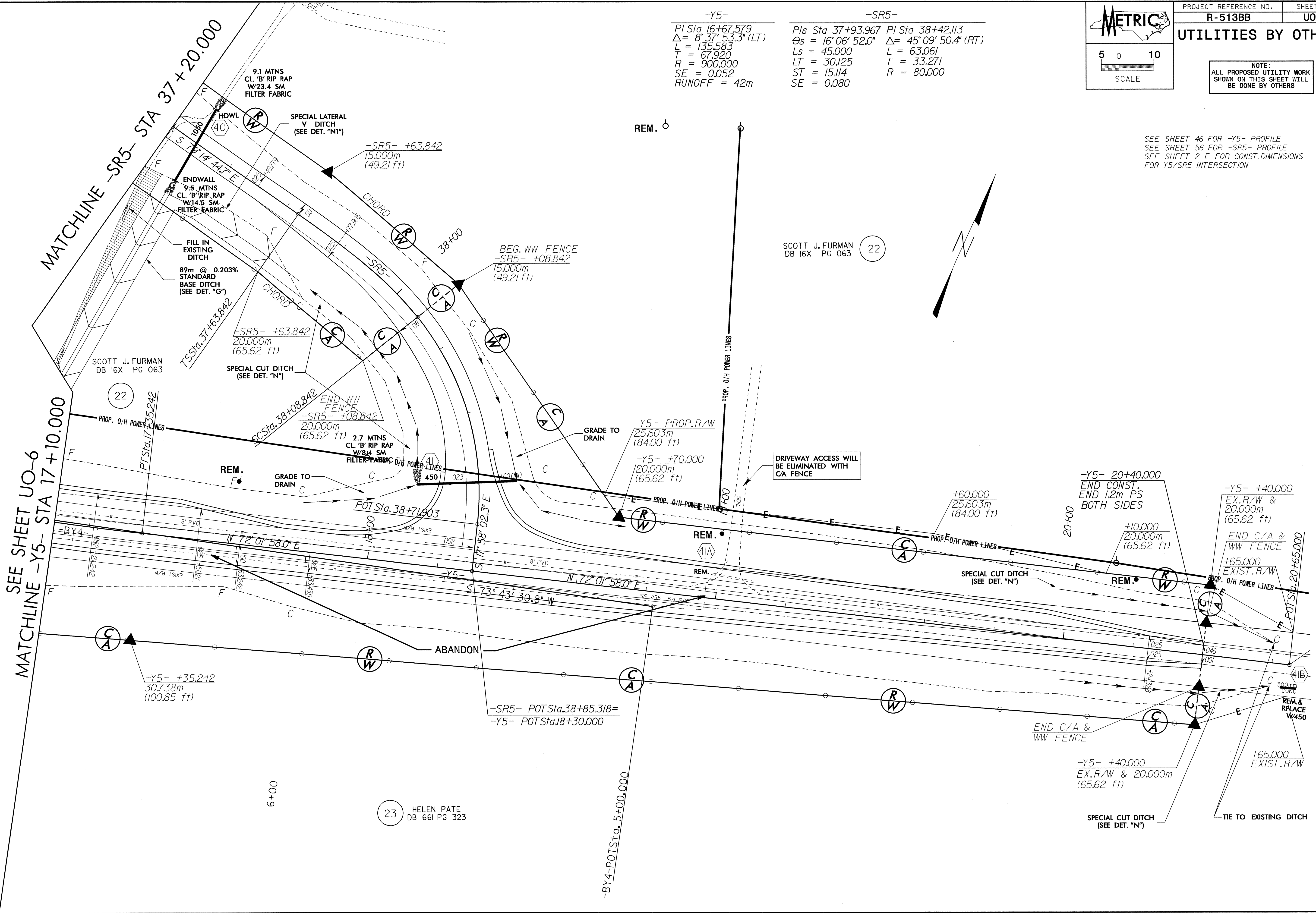
PROJECT REFERENCE NO. R-513BB SHEET NO. U0-9

UTILITIES BY OTHERS

NOTE: ALL PROPOSED UTILITY WORK SHOWN ON THIS SHEET WILL BE DONE BY OTHERS

SEE SHEET 46 FOR -Y5- PROFILE  
SEE SHEET 56 FOR -SR5- PROFILE  
SEE SHEET 2-E FOR CONST. DIMENSIONS FOR Y5/SR5 INTERSECTION

-Y5-	-SR5-
PI Sta 16+67.579	PIs Sta 37+93.967 PI Sta 38+42.113
$\Delta = 8^{\circ} 37' 53.3" (LT)$	$\Theta_s = 16^{\circ} 06' 52.0" \Delta = 45^{\circ} 09' 50.4" (RT)$
$L = 135.583$	$L_s = 45.000 \quad L = 63.061$
$T = 67.920$	$LT = 30.125 \quad T = 33.271$
$R = 900.000$	$ST = 15.114 \quad R = 80.000$
$SE = 0.052$	$SE = 0.080$
$RUNOFF = 42m$	



27-FEB-2004 15:36  
R:\Utilities\Projects\U009\1513bb\302.dwg  
sgrebec