

UTILITIES BY OTHERS

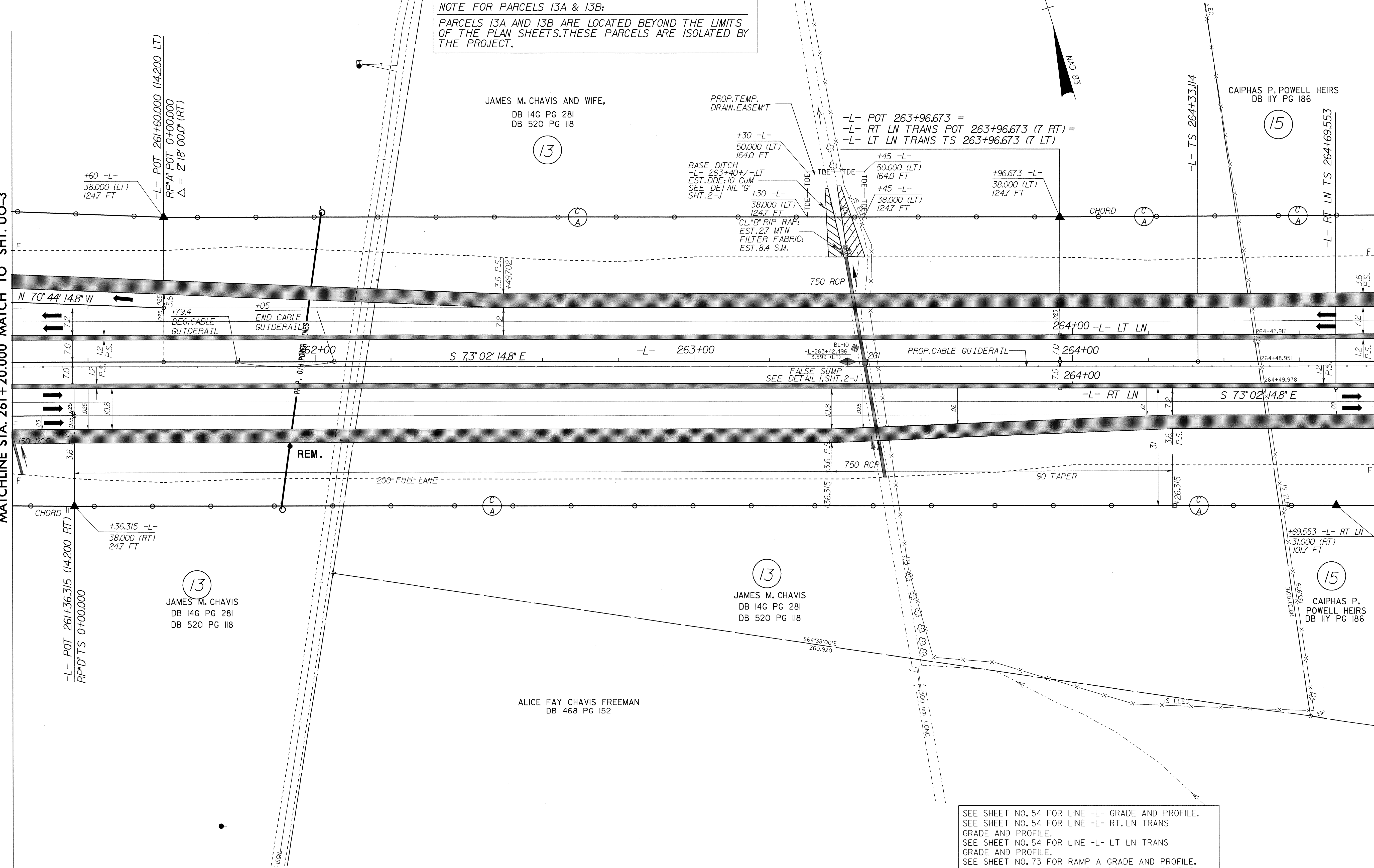
NOTE: ALL PROPOSED UTILITY WORK SHOWN ON THIS SHEET WILL BE DONE BY OTHERS

-L-		-L- LT LN TRANS	
Pls Sta 265+16.448	PI Sta 266+70.438	Pls Sta 268+24.358	Pls Sta 264+80.007
$\Theta_s = 0^\circ 59' 41.0''$	$\Delta = 3^\circ 34' 27.3''$ (LT)	$\Theta_s = 0^\circ 59' 41.0''$	$\Delta = 3^\circ 34' 27.3''$ (LT)
$L_s = 125.000$	$L = 224.576$	$L_s = 125.000$	$L = 224.577$
$LT = 83.335$	$T = 112.325$	$LT = 83.335$	$T = 112.325$
$ST = 41.668$	$R = 3,600.000$	$ST = 41.668$	$R = 3,600.000$
	$SE = 2.5\%$		$SE = 2.5\%$

NOTE FOR PARCELS 13A & 13B:
 PARCELS 13A AND 13B ARE LOCATED BEYOND THE LIMITS OF THE PLAN SHEETS. THESE PARCELS ARE ISOLATED BY THE PROJECT.

MATCHLINE STA. 261+20.000 MATCH TO SHT. UO-3

MATCHLINE STA. 264+80.000



SEE SHEET NO. 54 FOR LINE -L- GRADE AND PROFILE.
 SEE SHEET NO. 54 FOR LINE -L- RT LN TRANS GRADE AND PROFILE.
 SEE SHEET NO. 54 FOR LINE -L- LT LN TRANS GRADE AND PROFILE.
 SEE SHEET NO. 73 FOR RAMP A GRADE AND PROFILE.
 SEE SHEET NO. 76 FOR RAMP D GRADE AND PROFILE.

04252
 95-FEB-2004 08:32
 R:\Utilities\261-264\Drawings\UO-4\UO-4.dwg
 s:\p\board\at\05274655