

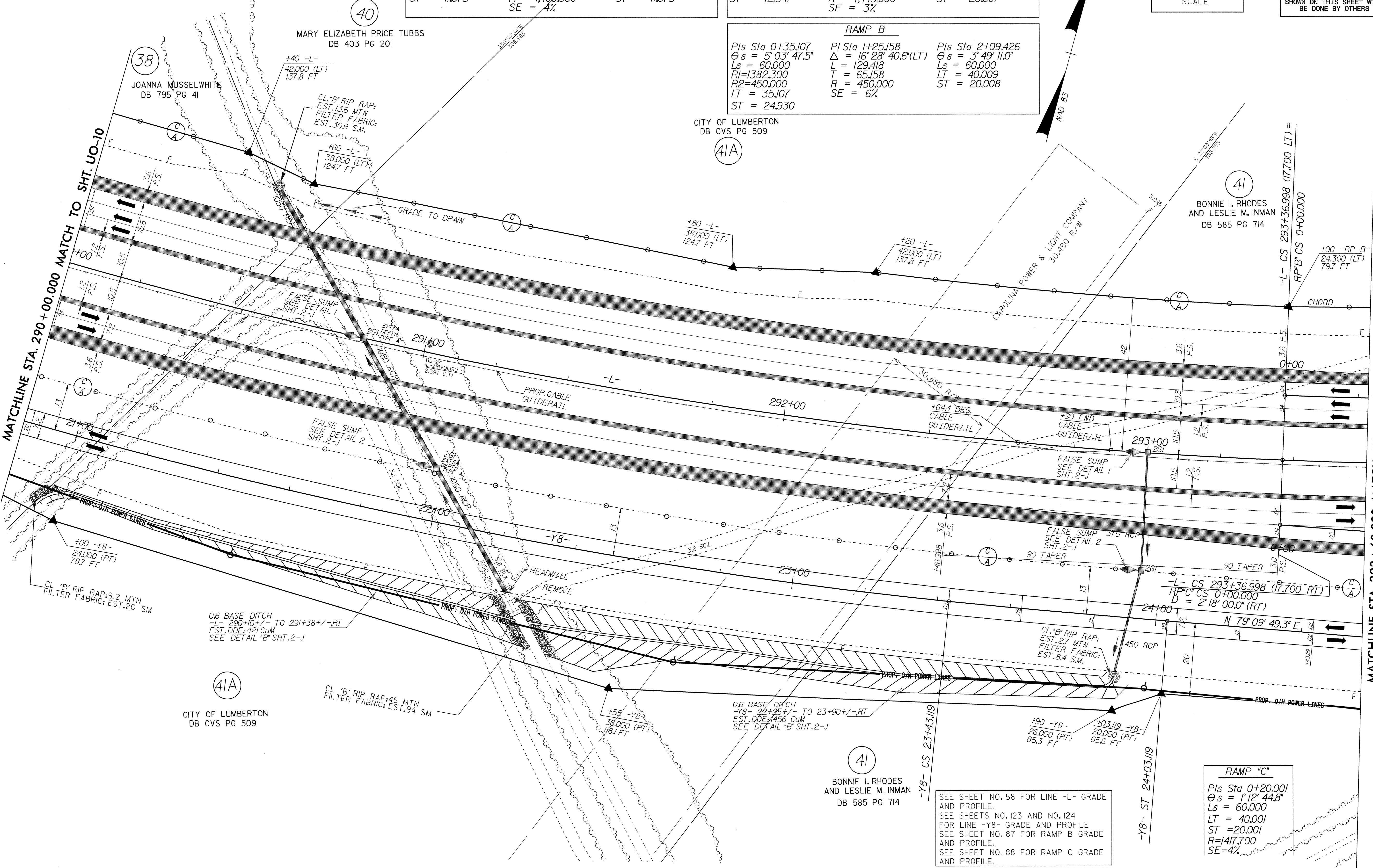
UTILITIES BY OTHERS

NOTE: ALL PROPOSED UTILITY WORK SHOWN ON THIS SHEET WILL BE DONE BY OTHERS

-L-		
Pls Sta 287+56.600	PI Sta 290+71.002	Pls Sta 293+78.672
$\theta_s = 2^\circ 33' 28.3"$	$\Delta = 22^\circ 02' 53.6" (LT)$	$\theta_s = 2^\circ 33' 28.3"$
Ls = 125.000	L = 538.740	Ls = 125.000
LT = 83.342	T = 272.744	LT = 83.342
ST = 41.675	R = 1,400.000	ST = 41.675
	SE = 4%	

-Y8-		
Pls Sta 18+33.523	PI Sta 21+11.541	Pls Sta 23+63.120
$\theta_s = 2^\circ 31' 04.2"$	$\Delta = 18^\circ 31' 40.1" (LT)$	$\theta_s = 1^\circ 11' 22.3"$
Ls = 127.000	L = 467.271	Ls = 60.000
LT = 84.675	T = 235.693	LT = 40.001
ST = 42.341	R = 1,445.000	ST = 20.001
	SE = 3%	

RAMP B		
Pls Sta 0+35.107	PI Sta 1+25.158	Pls Sta 2+09.426
$\theta_s = 5^\circ 03' 47.5"$	$\Delta = 16^\circ 28' 40.6" (LT)$	$\theta_s = 3^\circ 49' 11.0"$
Ls = 60.000	L = 129.418	Ls = 60.000
R1=1382.300	T = 65.158	LT = 40.009
R2=450.000	R = 450.000	ST = 20.008
LT = 35.107	SE = 6%	
ST = 24.930		



38 JOANNA MUSSELWHITE DB 795 PG 41

40 MARY ELIZABETH PRICE TUBBS DB 403 PG 201

41A CITY OF LUMBERTON DB CVS PG 509

41 BONNIE I. RHODES AND LESLIE M. INMAN DB 585 PG 714

41 BONNIE I. RHODES AND LESLIE M. INMAN DB 585 PG 714

0.6 BASE DITCH -L- 290+10+/- TO 291+38+/- -RT EST. DDE: 421 CUM SEE DETAIL "B" SHT. 2-J

41A CITY OF LUMBERTON DB CVS PG 509

CL. B RIP RAP: 45 MTN FILTER FABRIC: EST. 94 SM

0.6 BASE DITCH -Y8- 22+25+/- TO 23+90+/- -RT EST. DDE: 456 CUM SEE DETAIL "B" SHT. 2-J

RAMP "C"	
Pls Sta 0+20.001	$\theta_s = 1^\circ 12' 44.8"$
Ls = 60.000	LT = 40.001
ST = 20.001	R = 1417.700
	SE = 4%

SEE SHEET NO. 58 FOR LINE -L- GRADE AND PROFILE. SEE SHEETS NO. 123 AND NO. 124 FOR LINE -Y8- GRADE AND PROFILE. SEE SHEET NO. 87 FOR RAMP B GRADE AND PROFILE. SEE SHEET NO. 88 FOR RAMP C GRADE AND PROFILE.

MATCHLINE STA. 290+00.000 MATCH TO SHT. UO-10

MATCHLINE STA. 293+60.000 MATCH TO SHT. UO-12 & 13

042592
C:\MSW_2004_1021
R:\0115-2004_1021
sgc\bol\11-AT_10821455