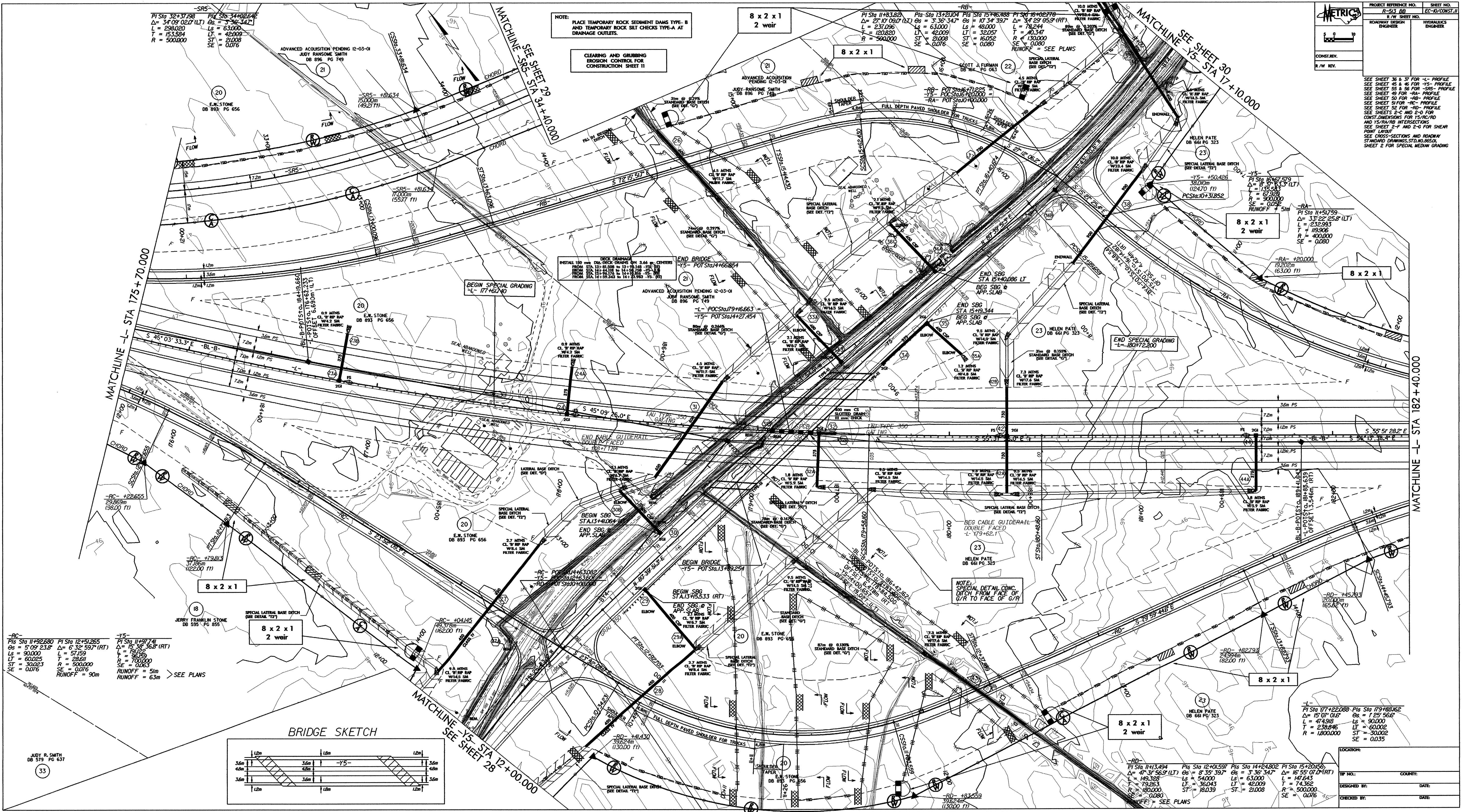


PROJECT REFERENCE NO. R-513 BB		SHEET NO. EC-10/CONST. II	
ROADWAY DESIGN ENGINEER		HYDRAULICS ENGINEER	
CONTRAV. R/W REV.			

SEE SHEET 36 & 37 FOR -L- PROFILE
 SEE SHEET 45 & 46 FOR -Y5- PROFILE
 SEE SHEET 55 & 56 FOR -SRS- PROFILE
 SEE SHEET 49 FOR -RA- PROFILE
 SEE SHEET 50 FOR -RB- PROFILE
 SEE SHEET 51 FOR -RC- PROFILE
 SEE SHEET 52 FOR -RD- PROFILE
 SEE SHEETS 2-C AND 2-D FOR CONST. DIMENSIONS FOR Y5/RD AND 15/RA/RB INTERSECTIONS
 SEE SHEET 2-F AND 2-G FOR SHEAR POINT LAYOUT
 SEE CROSS-SECTIONS AND ROADWAY STANDARD DRAWINGS, STOLM, RES-C, SHEET 2 FOR SPECIAL MEDIAN GRADING



PI Sta 32+37.98
 $\Delta = 34^{\circ}09'02.07$ (LT)
 $L = 239.020$
 $T = 153.584$
 $R = 500.000$

PI Sta 11+83.82
 $\Delta = 27^{\circ}10'09.07$ (RT)
 $L = 27.096$
 $T = 12.020$
 $R = 120.820$

PI Sta 15+42.00
 $\Delta = 17^{\circ}34'39.7$
 $L = 48.000$
 $T = 32.057$
 $R = 130.000$

PI Sta 11+51.79
 $\Delta = 33^{\circ}22'25.8$ (LT)
 $L = 232.993$
 $T = 119.906$
 $R = 400.000$

PI Sta 17+22.088
 $\Delta = 15^{\circ}01'01.6$
 $L = 47.996$
 $T = 238.846$
 $R = 1800.000$

PI Sta 11+92.880
 $\Delta = 5^{\circ}09'23.6$
 $L = 90.000$
 $T = 60.025$
 $R = 700.000$

PI Sta 12+51.265
 $\Delta = 6^{\circ}32'59.7$ (RT)
 $L = 57.159$
 $T = 26.611$
 $R = 700.000$

PI Sta 11+91.741
 $\Delta = 15^{\circ}36'36.8$ (RT)
 $L = 84.195$
 $T = 48.195$
 $R = 700.000$

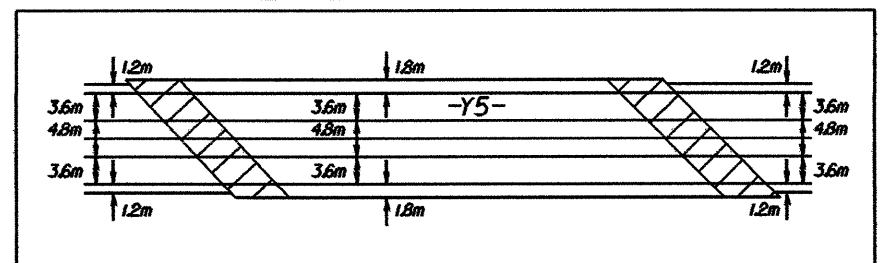
PI Sta 14+3.494
 $\Delta = 47^{\circ}31'56.9$ (LT)
 $L = 149.398$
 $T = 79.263$
 $R = 180.000$

PI Sta 12+01.591
 $\Delta = 8^{\circ}35'39.7$
 $L = 54.000$
 $T = 30.043$
 $R = 180.000$

PI Sta 14+24.802
 $\Delta = 3^{\circ}36'34.7$
 $L = 63.000$
 $T = 42.009$
 $R = 500.000$

PI Sta 15+20.56
 $\Delta = 16^{\circ}55'07.0$ (RT)
 $L = 147.645$
 $T = 74.368$
 $R = 500.000$

BRIDGE SKETCH



MATCHLINE -L- STA 182 + 40.000

MATCHLINE -L- STA 175 + 70.000

MATCHLINE -Y5- STA 12 + 00.000

MATCHLINE -SRS- STA 34 + 40.000

MATCHLINE -SEE SHEET 30 -Y5- STA 17 + 10.000