

PROJECT REFERENCE NO. R-513 BB	SHEET NO. EC-29/CONST.30
R/W SHEET NO.	
ROADWAY DESIGN ENGINEER	HYDRAULICS ENGINEER
CONST.REV.	
R/W REV.	

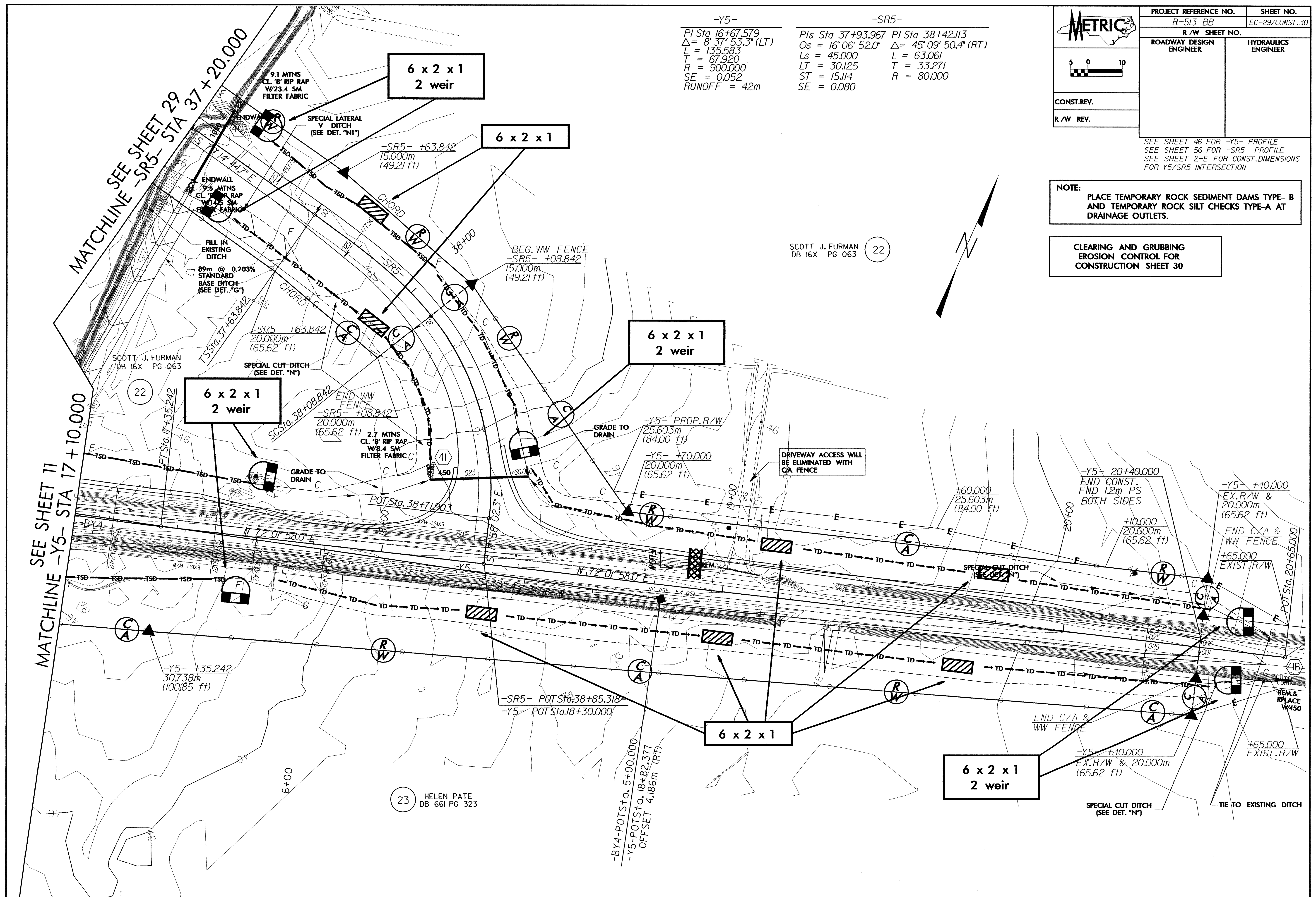
SEE SHEET 46 FOR -Y5- PROFILE
SEE SHEET 56 FOR -SR5- PROFILE
SEE SHEET 2-E FOR CONST.DIMENSIONS FOR Y5/SR5 INTERSECTION

NOTE:
PLACE TEMPORARY ROCK SEDIMENT DAMS TYPE-B AND TEMPORARY ROCK SILT CHECKS TYPE-A AT DRAINAGE OUTLETS.

CLEARING AND GRUBBING EROSION CONTROL FOR CONSTRUCTION SHEET 30

-Y5-
PI Sta 16+67.579
 $\Delta = 8^\circ 37' 53.3''$ (LT)
L = 135.583
T = 67.920
R = 900.000
SE = 0.052
RUNOFF = 42m

-SR5-
PIs Sta 37+93.967 PI Sta 38+42.113
 $\Delta = 16^\circ 06' 52.0''$ $\Delta = 45^\circ 09' 50.4''$ (RT)
Ls = 45.000 L = 63.061
LT = 30.125 T = 33.271
ST = 15.114 R = 80.000
SE = 0.080



SCOTT J. FURMAN
DB 16X PG 063 (22)

(23) HELEN PATE
DB 661 PG 323

SEE SHEET 11
MATCHLINE -Y5- STA 17+10.000

MATCHLINE SEE SHEET 29
-SR5- STA 37+20.000

-BY4-POTSta. 5+00.000
-Y5-POTSta. 18+82.377
OFFSET 4.186m (RT)

POTSta. 20+65.000