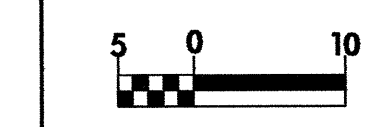
	PROJECT REFERENCE NO.	SHEET NO.
	R-513 BB	EC-32/CONST.4
R/W SHEET NO.		
ROADWAY DESIGN ENGINEER	HYDRAULICS ENGINEER	
CONST. REV.		
R/W REV.		



DATUM DESCRIPTION

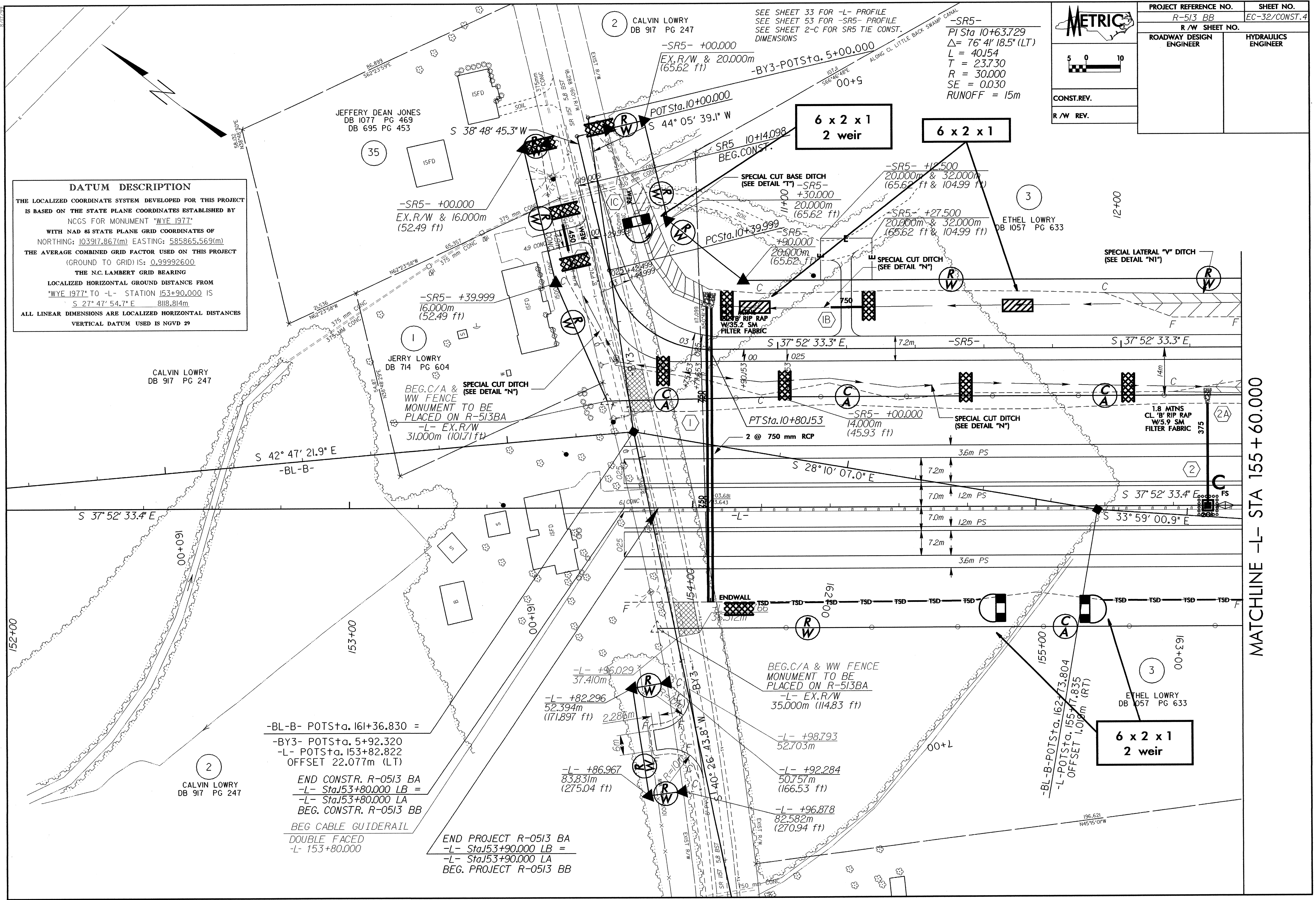
THE LOCALIZED COORDINATE SYSTEM DEVELOPED FOR THIS PROJECT IS BASED ON THE STATE PLANE COORDINATES ESTABLISHED BY NCGS FOR MONUMENT "WYE 1977"

WITH NAD 83 STATE PLANE GRID COORDINATES OF NORTHING: 103917.867(m) EASTING: 585865.569(m)

THE AVERAGE COMBINED GRID FACTOR USED ON THIS PROJECT (GROUND TO GRID) IS: 0.99992600

THE N.C. LAMBERT GRID BEARING LOCALIZED HORIZONTAL GROUND DISTANCE FROM "WYE 1977" TO -L- STATION 153+90.000 IS S 27° 47' 54.7" E 8118.814m

ALL LINEAR DIMENSIONS ARE LOCALIZED HORIZONTAL DISTANCES VERTICAL DATUM USED IS NGVD 29



CALVIN LOWRY
DB 917 PG 247

JERRY LOWRY
DB 714 PG 604

ETHEL LOWRY
DB 1057 PG 633

ETHEL LOWRY
DB 1057 PG 633

-BL-B- POTSta. 161+36.830 =
-BY3- POTSta. 5+92.320
-L- POTSta. 153+82.822
OFFSET 22.077m (LT)

CALVIN LOWRY
DB 917 PG 247

END CONSTR. R-0513 BA
-L- Sta153+80.000 LB =
-L- Sta153+80.000 LA
BEG. CONSTR. R-0513 BB
BEG CABLE GUIDERAIL
DOUBLE FACED
-L- 153+80.000

END PROJECT R-0513 BA
-L- Sta153+90.000 LB =
-L- Sta153+90.000 LA
BEG. PROJECT R-0513 BB

MATCHLINE -L- STA 155 + 60.000