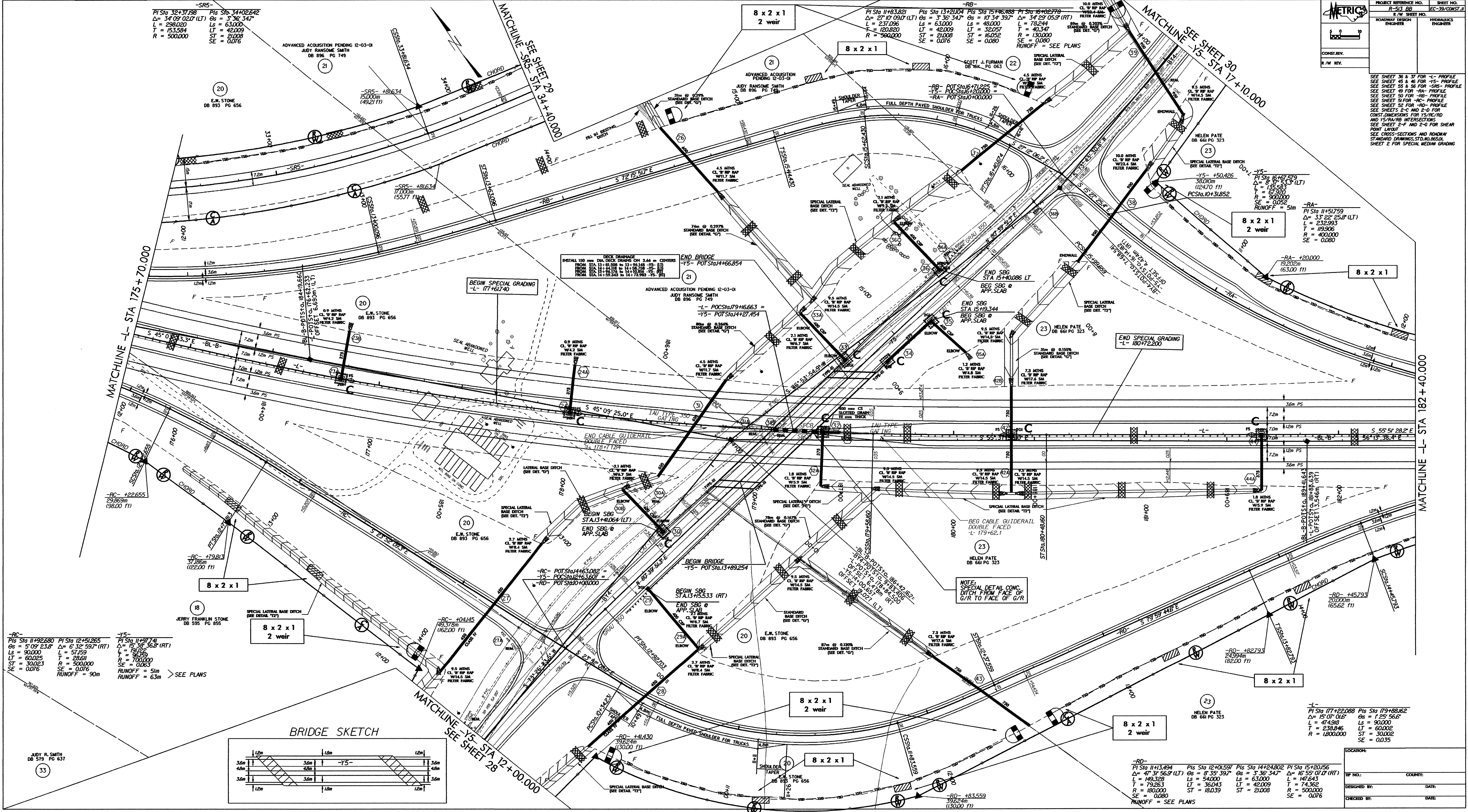


PROJECT REFERENCE NO.	R-53 88
SHEET NO.	EC-39/CONSTR. 1
ROADWAY DESIGN ENGINEER	
HYDRAULICS ENGINEER	
CONSTRY.	
R.W. REV.	

SEE SHEET 36 & 37 FOR -L- PROFILE
 SEE SHEET 38 & 39 FOR -Y5- PROFILE
 SEE SHEET 39 & 40 FOR -RA- PROFILE
 SEE SHEET 40 FOR -RC- PROFILE
 SEE SHEET 41 FOR -RD- PROFILE
 SEE SHEET 42 FOR -R- PROFILE
 SEE SHEETS 2-C AND 2-D FOR
 CONST. DIMENSIONS FOR 15/NC/ND
 AND 15/PA/ND INTERSECTIONS
 SEE SHEET 2-F AND 2-G FOR SHEAR
 POINT LAYOUT
 SEE CROSS-SECTIONS AND ROADWAY
 STANDARD DRAWINGS, STANDARD
 SHEET 2 FOR SPECIAL MEDIAN GRADING



-SRS-
 PI Sta 32+37.58 Δ = 34° 09' 02.0" (LT)
 L = 290.000
 T = 153.584
 ST = 210.08
 R = 500.000
 SE = 0.076

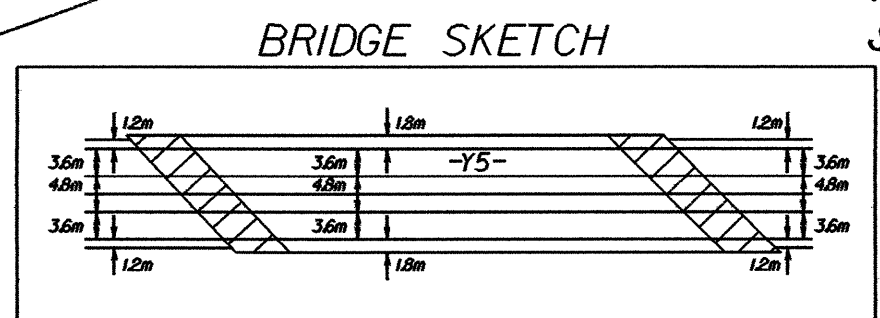
-RB-
 PI Sta 11+83.82 Δ = 27° 10' 09.0" (LT)
 L = 237.096
 T = 120.820
 ST = 210.08
 R = 500.000
 SE = 0.076

-R-
 PI Sta 15+74.74 Δ = 15° 36' 36.2" (RT)
 L = 147.59
 T = 74.362
 ST = 210.08
 R = 500.000
 SE = 0.076

-L-
 PI Sta 17+22.08 Δ = 15° 07' 01.6"
 L = 147.59
 T = 74.362
 ST = 210.08
 R = 500.000
 SE = 0.076

-RC-
 PI Sta 11+92.680 Δ = 5° 09' 23.8"
 L = 90.000
 T = 60.025
 ST = 30.023
 R = 500.000
 SE = 0.076

-Y5-
 PI Sta 11+97.74 Δ = 15° 36' 36.2" (RT)
 L = 147.59
 T = 74.362
 ST = 210.08
 R = 500.000
 SE = 0.076



-R-
 PI Sta 11+13.494 Δ = 47° 31' 56.9" (LT)
 L = 149.328
 T = 79.263
 ST = 180.000
 R = 500.000
 SE = 0.080

-L-
 PI Sta 17+22.08 Δ = 15° 07' 01.6"
 L = 147.59
 T = 74.362
 ST = 210.08
 R = 500.000
 SE = 0.076

LOCATION:	
DATE:	
DESIGNED BY:	
CHECKED BY:	