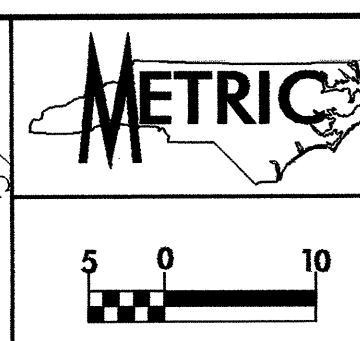
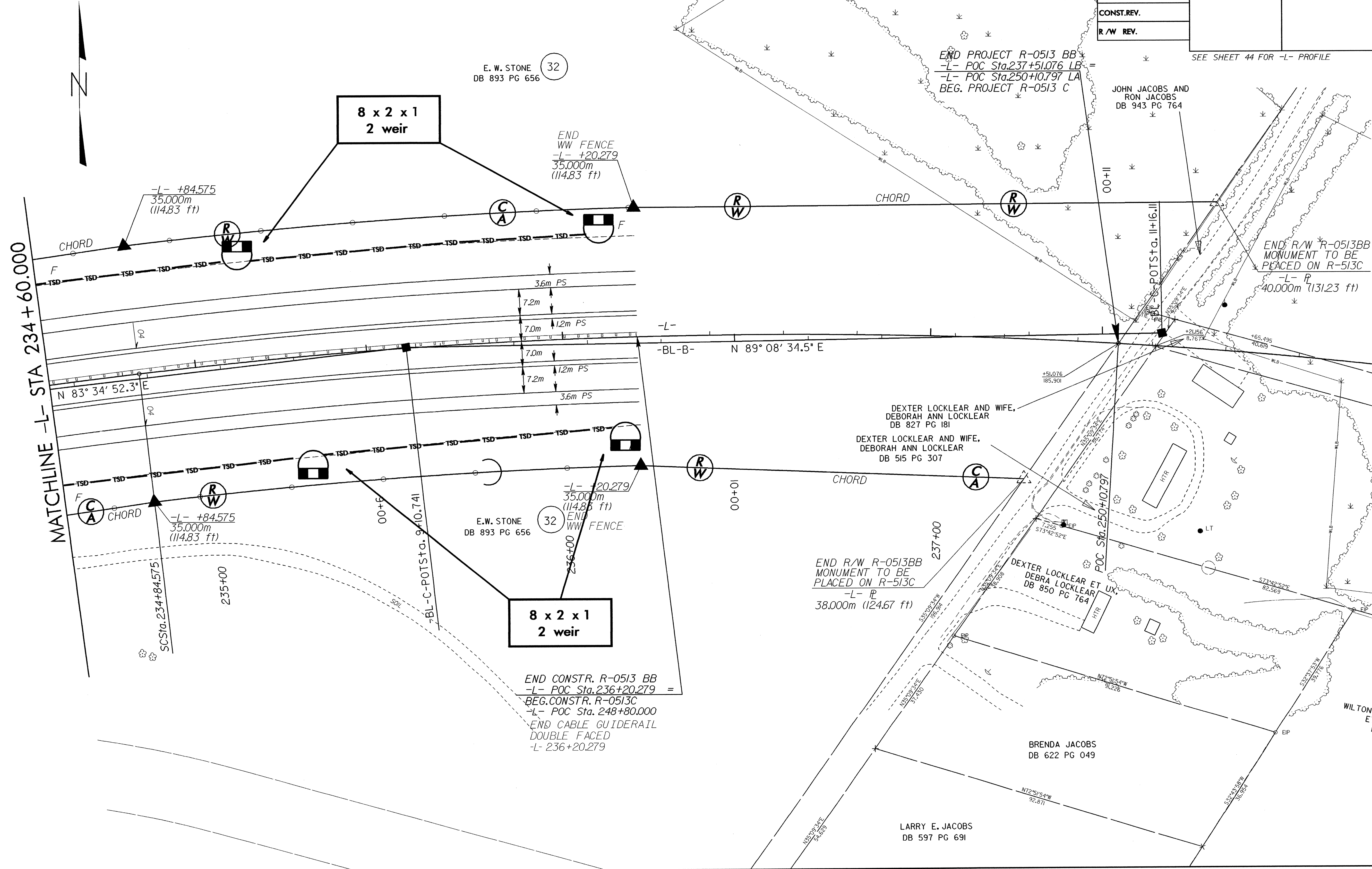


-L-
 Pts Sta 234+42.916 PI Sta 236+18.177
 $\theta_s = 2^\circ 23' 14.4''$ $\Delta = 10^\circ 10' 46.5''$ (RT)
 $L_s = 125.000$ $L = 266.501$
 $LT = 83.341$ $T = 133.602$
 $ST = 41.674$ $R = 1,500.000$
 $SE = 0.04$



| | |
|-------------------------|---------------------|
| PROJECT REFERENCE NO. | SHEET NO. |
| R-513 BB | EC-55/CONST.27 |
| R/W SHEET NO. | |
| ROADWAY DESIGN ENGINEER | HYDRAULICS ENGINEER |
| CONST. REV. | |
| R/W REV. | |

SEE SHEET 44 FOR -L- PROFILE



E.W. STONE
DB 893 PG 656

**8 x 2 x 1
2 weir**

END
WW FENCE
-L- +20.279
35.000m
(114.83 ft)

-L- +84.575
35.000m
(114.83 ft)

END PROJECT R-0513 BB
-L- POC Sta.237+51.076 LB
-L- POC Sta.250+10.797 LA
BEG. PROJECT R-0513 C

JOHN JACOBS AND
RON JACOBS
DB 943 PG 764

END R/W R-0513BB
MONUMENT TO BE
PLACED ON R-513C
-L- R
40.000m (131.23 ft)

-BL-B- N 89° 08' 34.5" E

DEXTER LOCKLEAR AND WIFE,
DEBORAH ANN LOCKLEAR
DB 827 PG 181

DEXTER LOCKLEAR AND WIFE,
DEBORAH ANN LOCKLEAR
DB 515 PG 307

E.W. STONE
DB 893 PG 656

-L- +20.279
35.000m
(114.83 ft)
END
WW FENCE

**8 x 2 x 1
2 weir**

END CONSTR. R-0513 BB
-L- POC Sta.236+20.279 =
BEG.CONSTR. R-0513C
-L- POC Sta. 248+80.000
END CABLE GUIDERAIL
DOUBLE FACED
-L- 236+20.279

END R/W R-0513BB
MONUMENT TO BE
PLACED ON R-513C
-L- R
38.000m (124.67 ft)

DEXTER LOCKLEAR ET UX,
DEBRA LOCKLEAR
DB 850 PG 764

BRENDA JACOBS
DB 622 PG 049

LARRY E. JACOBS
DB 597 PG 691

MATCHLINE -L- STA 234+60.000

N 83° 34' 52.3" E

SCSta.234+84.575

-BL-C-POTSta. 9410.741

POC Sta.250+10.797

WILTON
E7
L