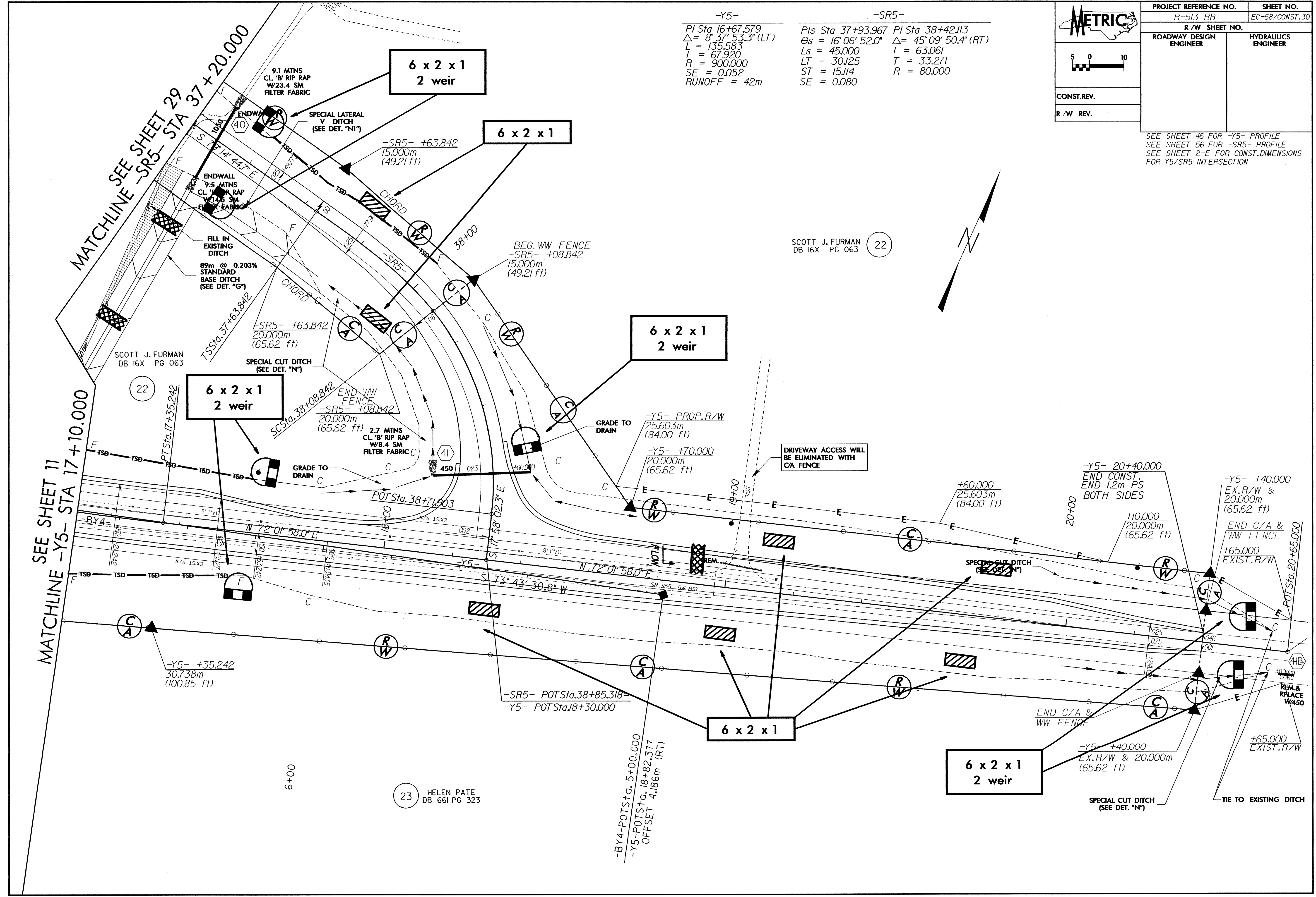


PROJECT REFERENCE NO. R-513 BB	SHEET NO. EC-58/CONST.30
R/W SHEET NO.	
ROADWAY DESIGN ENGINEER	HYDRAULICS ENGINEER
CONST. REV.	
R/W REV.	

SEE SHEET 46 FOR -Y5- PROFILE
 SEE SHEET 56 FOR -SR5- PROFILE
 SEE SHEET 2-E FOR CONST. DIMENSIONS
 FOR Y5/SR5 INTERSECTION

-Y5-
 PI Sta 16+67.579
 $\Delta = 8^\circ 37' 53.3''$ (LT)
 L = 135.583
 T = 67.920
 R = 900.000
 SE = 0.052
 RUNOFF = 42m

-SR5-
 PIs Sta 37+93.967 PI Sta 38+42.113
 $\Theta_s = 16^\circ 06' 52.0''$ $\Delta = 45^\circ 09' 50.4''$ (RT)
 Ls = 45.000 L = 63.061
 LT = 30.125 T = 33.271
 ST = 15.114 R = 80.000
 SE = 0.080



SCOTT J. FURMAN
 DB 16X PG 063 (22)

(23) HELEN PATE
 DB 66I PG 323