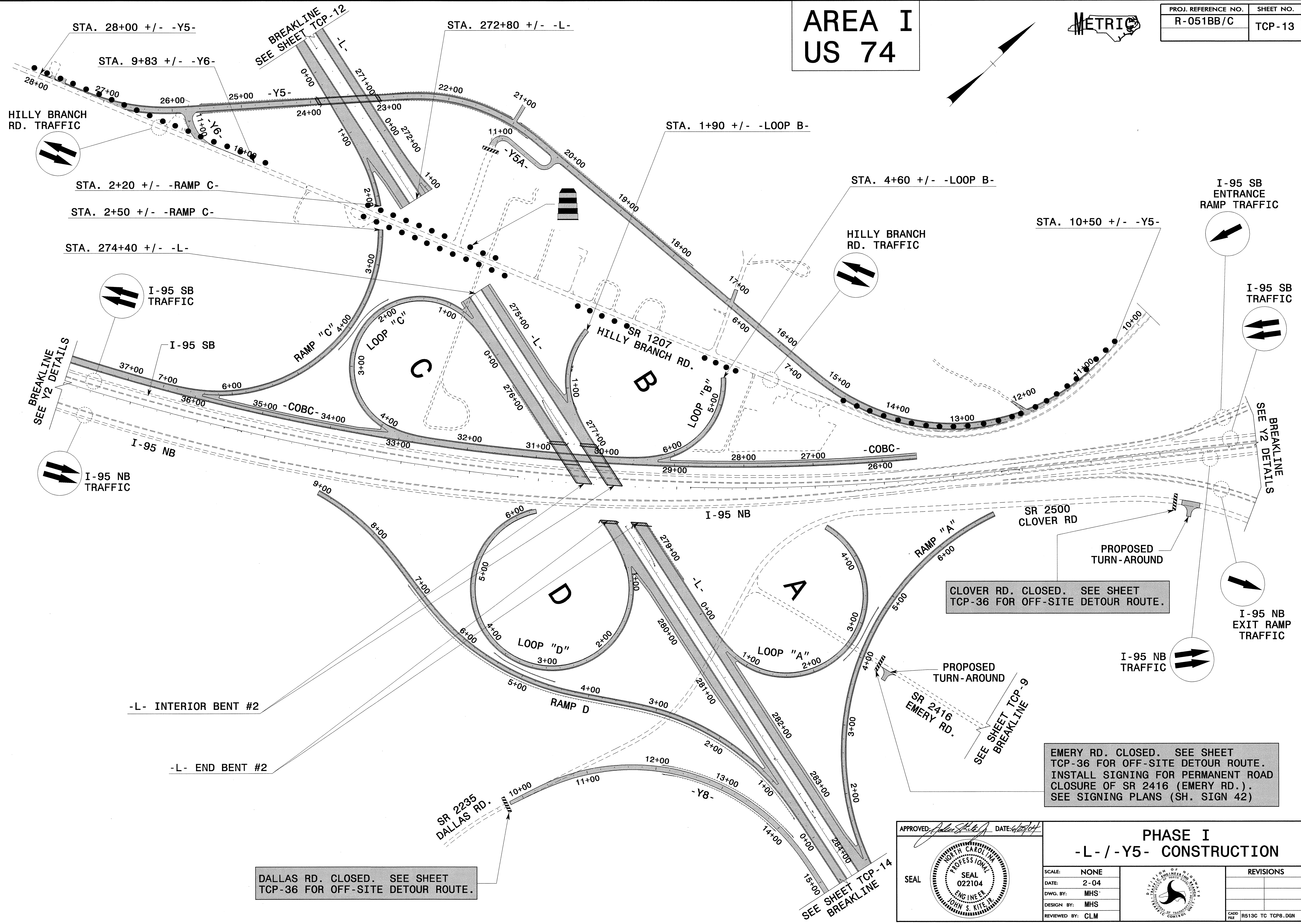


AREA I US 74



PROJ. REFERENCE NO. R-051BB/C	SHEET NO. TCP-13
----------------------------------	---------------------



HILLY BRANCH RD. TRAFFIC

STA. 2+20 +/- -RAMP C-

STA. 2+50 +/- -RAMP C-

STA. 274+40 +/- -L-

I-95 SB TRAFFIC

BREAKLINE
SEE Y2 DETAILS

I-95 SB

I-95 NB TRAFFIC

I-95 NB

I-95 SB ENTRANCE RAMP TRAFFIC

I-95 SB TRAFFIC

BREAKLINE
SEE Y2 DETAILS

I-95 NB EXIT RAMP TRAFFIC

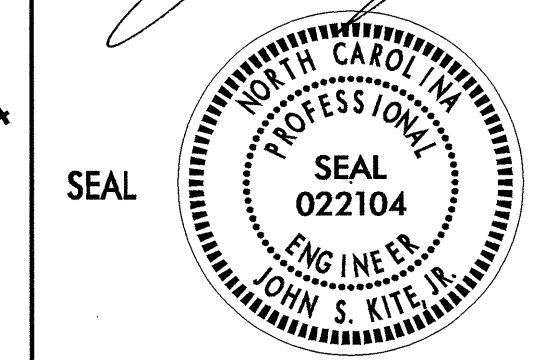
I-95 NB TRAFFIC

CLOVER RD. CLOSED. SEE SHEET TCP-36 FOR OFF-SITE DETOUR ROUTE.

EMERY RD. CLOSED. SEE SHEET TCP-36 FOR OFF-SITE DETOUR ROUTE. INSTALL SIGNING FOR PERMANENT ROAD CLOSURE OF SR 2416 (EMERY RD.). SEE SIGNING PLANS (SH. SIGN 42)

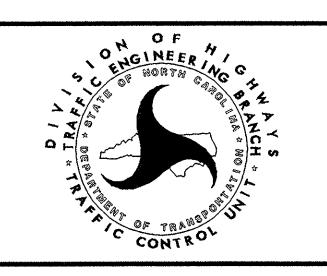
DALLAS RD. CLOSED. SEE SHEET TCP-36 FOR OFF-SITE DETOUR ROUTE.

APPROVED: *[Signature]* DATE: 6/27/04



PHASE I -L- / -Y5- CONSTRUCTION

SCALE:	NONE
DATE:	2-04
DWG. BY:	MHS
DESIGN BY:	MHS
REVIEWED BY:	CLM



REVISIONS

24-JUN-2004 11:25:54 SAV513C.TC_TCP013.dgn
 P:\TCP\FINAL TCP-13\513C2331
 msteeleman