

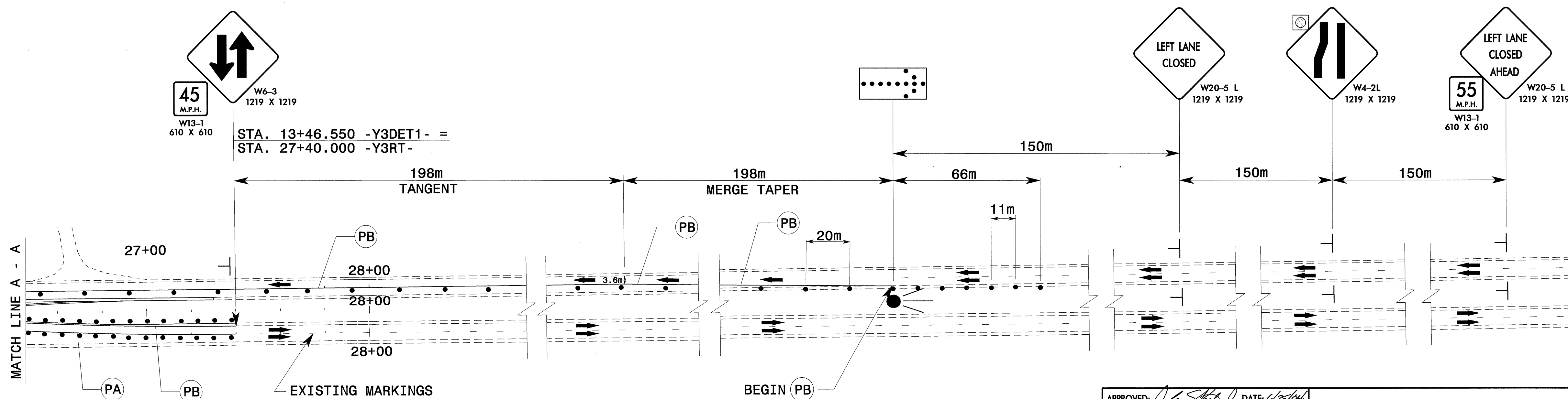
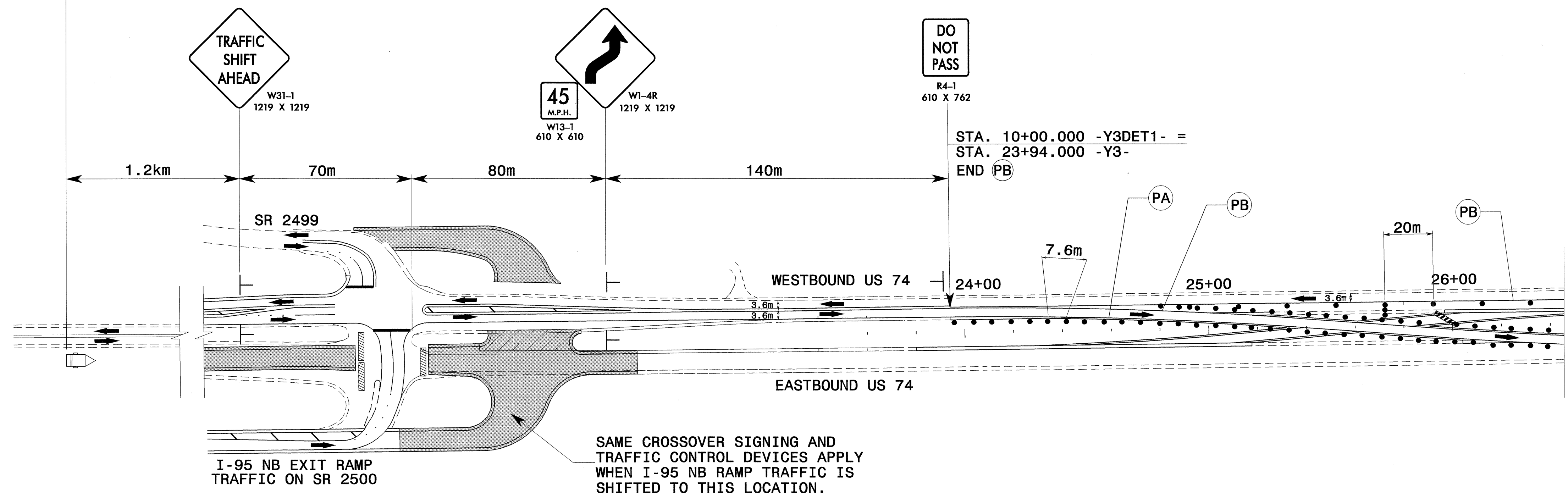


PROJ. REFERENCE NO.	SHEET NO.
R-0513BB/C	TCP-33

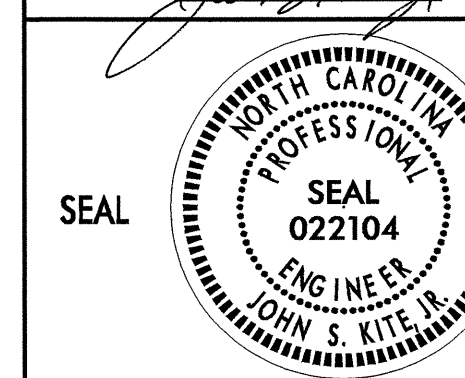
SUGGESTED MESSAGE		
MESSAGE NO. 1	MESSAGE NO. 2	MESSAGE NO. 3
US 74 TRAFFIC SHIFT	MEDIAN CROSSING	1 MILE AHEAD

CHANGEABLE MESSAGE SIGN

CROSSOVER TRAFFIC CONTROL AND ADVANCED WARNING SIGNING IS FOR CROSSOVER SHOWN ON SHEET TCP-26

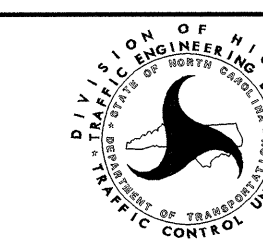


APPROVED: *John S. Kite, Jr.* DATE: 6/20/04



CROSSOVER ADVANCED WARNING SIGNING FOR PHASE I (US 74 EB ON CROSSOVER)

SCALE: NONE
DATE: 3-04
DWG. BY: MHS
DESIGN BY: MHS
REVIEWED BY: CLM



REVISIONS

CADD FILE CROSSOVER SIGNING 1.DGN