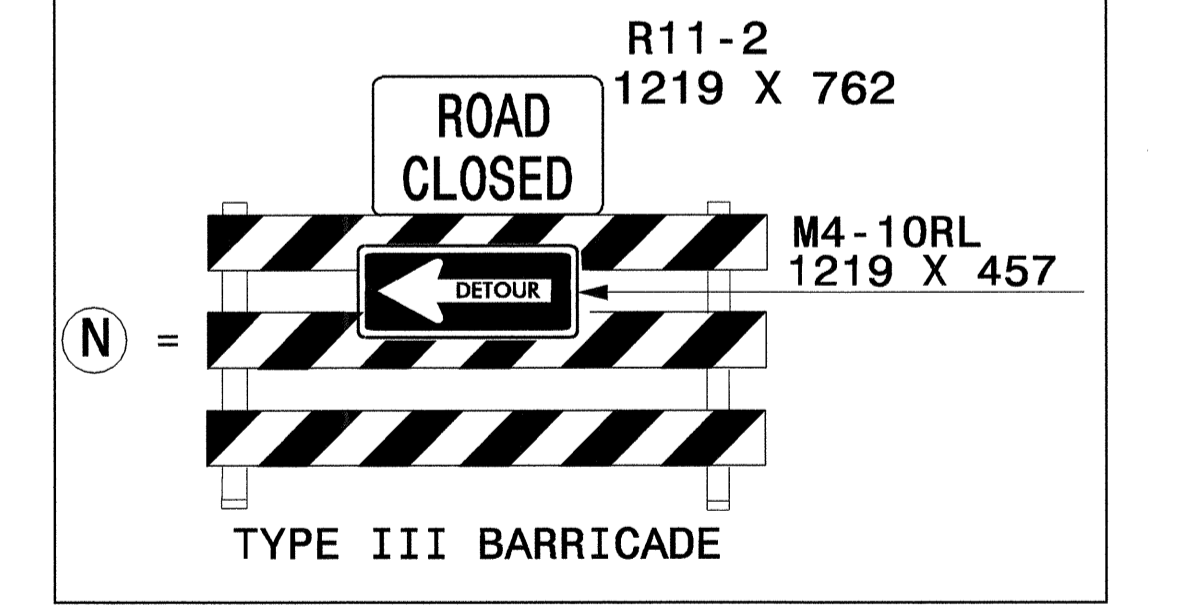
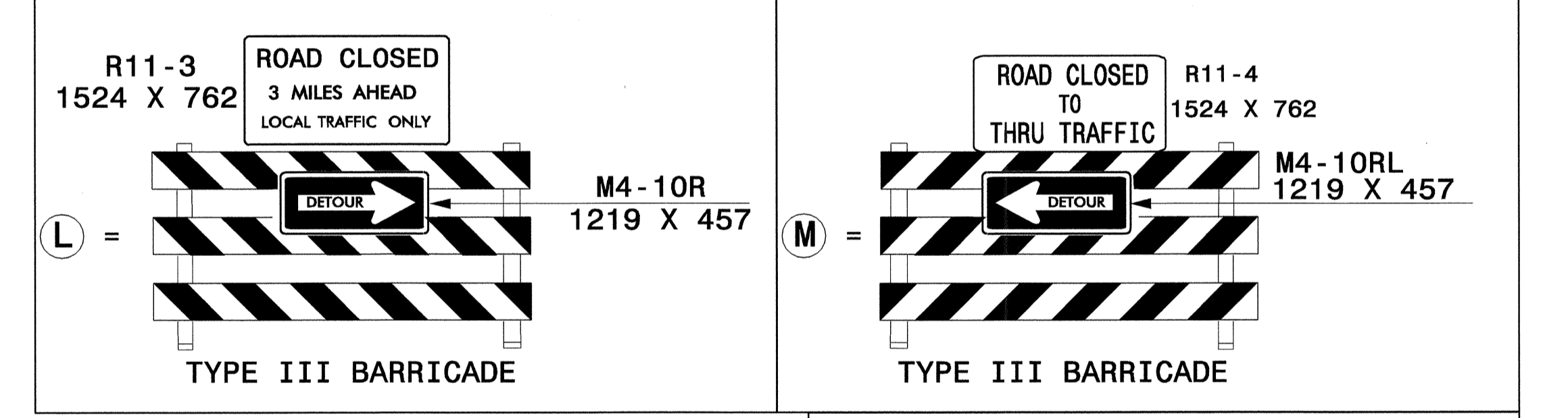
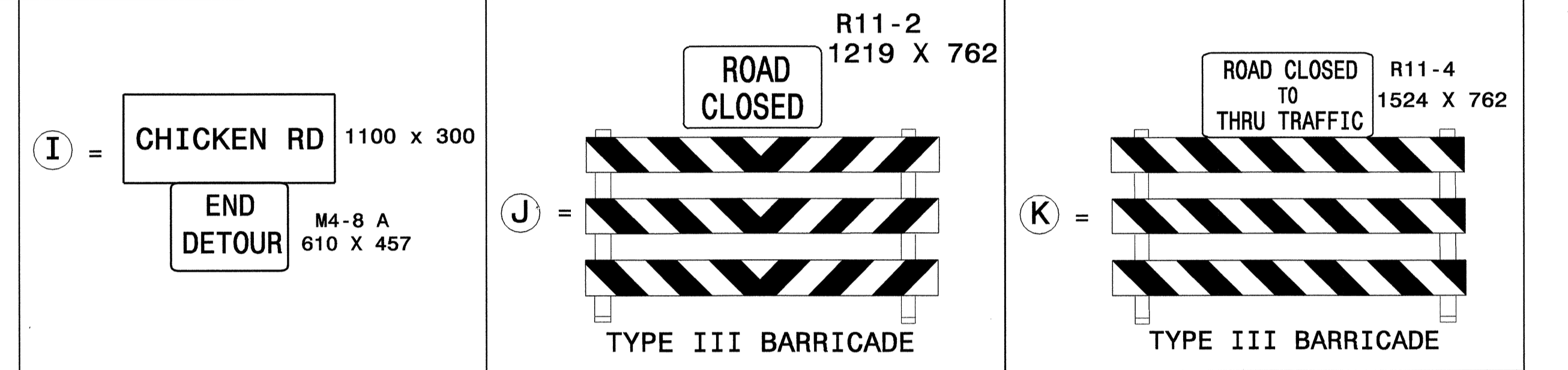
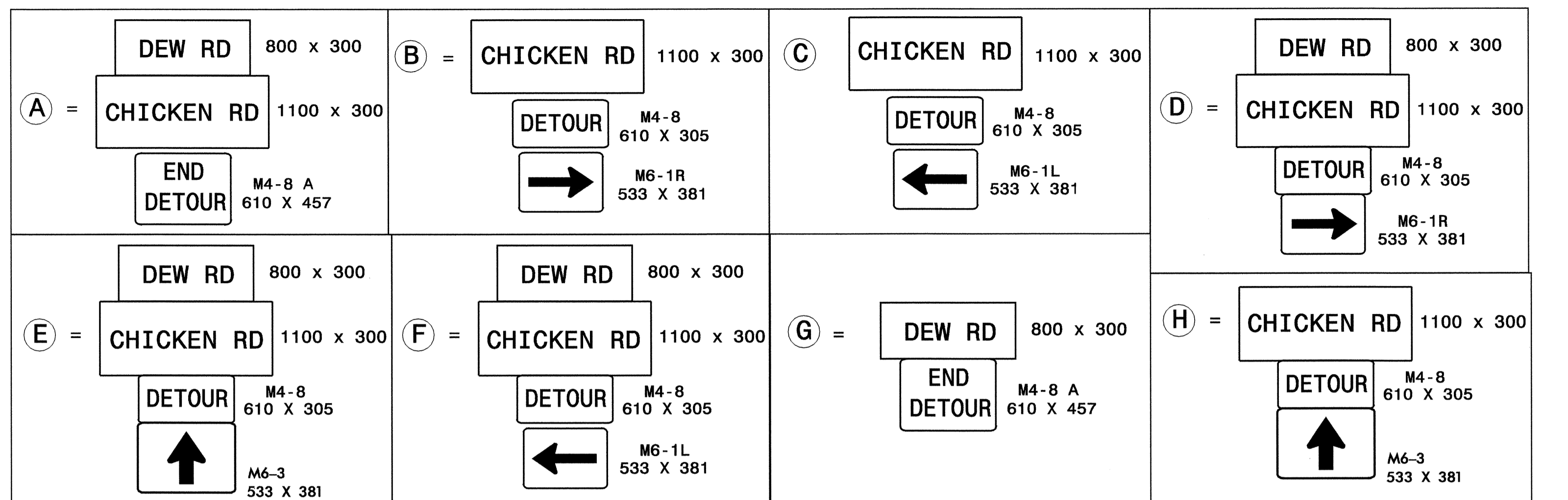


DETOUR ROUTE



24-JUN-2004 11:35  
 FA TCP\FINAL TCP\SR513C\_TC-TCP034.dgn  
 ms:teeliman AT TEL:212333

APPROVED: <i>John S. Kite</i> DATE: 6/24/04 	<b>PHASE I OFFSITE DETOUR SIGNING (R-0513BB) -Y- (CHICKEN RD) &amp; -Y5- (DEW RD)</b>						
SCALE: NO SCALE DATE: 2-04 DWG. BY: SBC DESIGN BY: SBC REVIEWED BY: CLM	REVISIONS <table border="1"> <tr><td> </td><td> </td></tr> <tr><td> </td><td> </td></tr> <tr><td> </td><td> </td></tr> </table>						