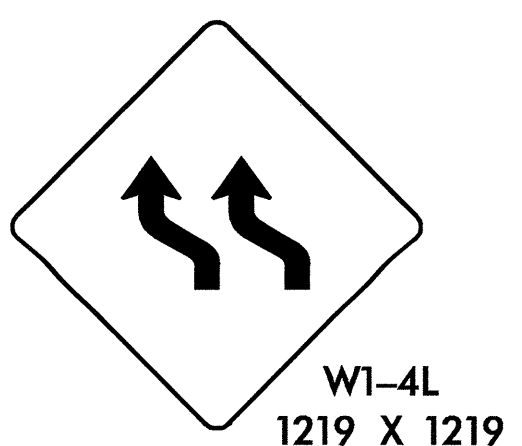
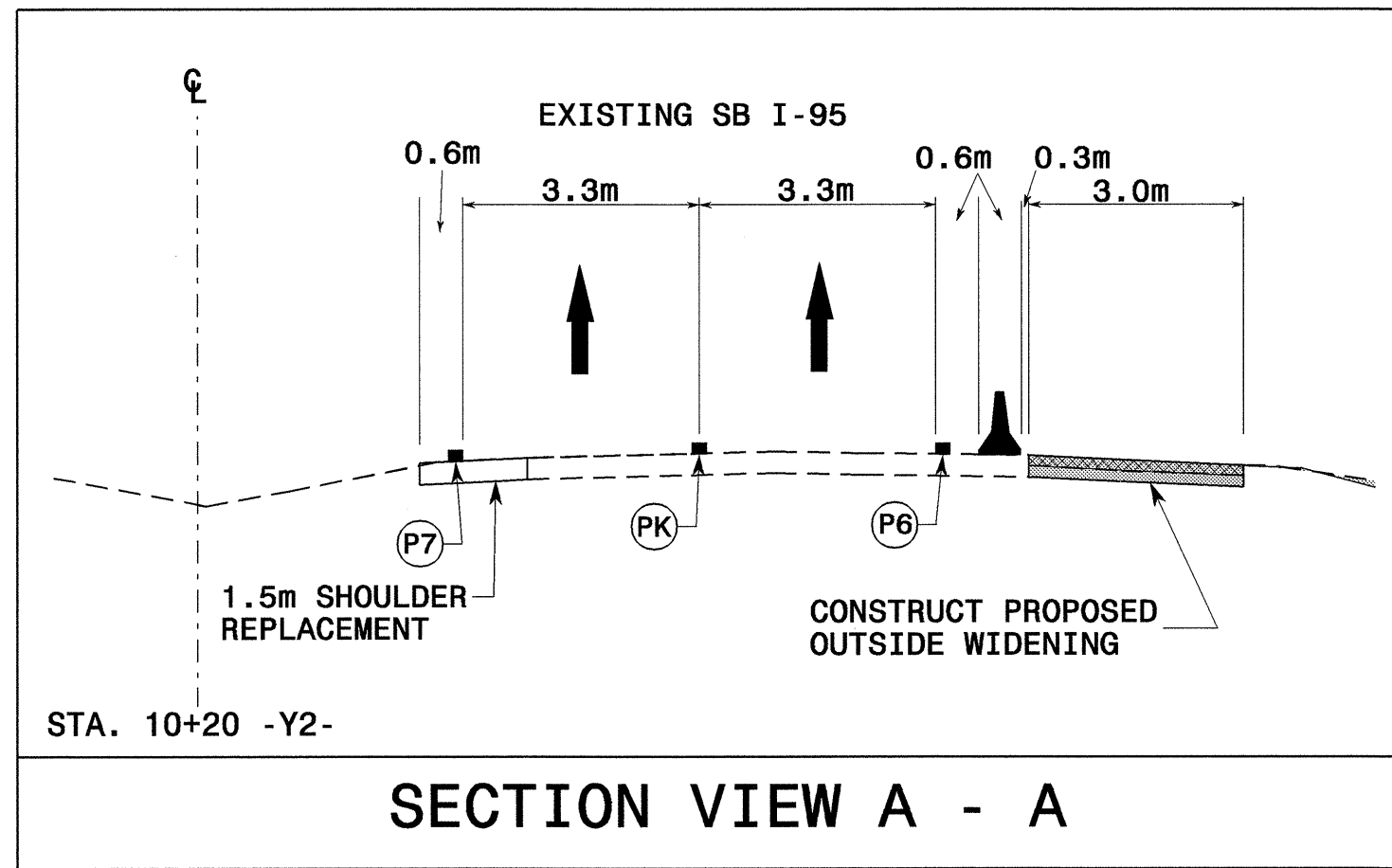
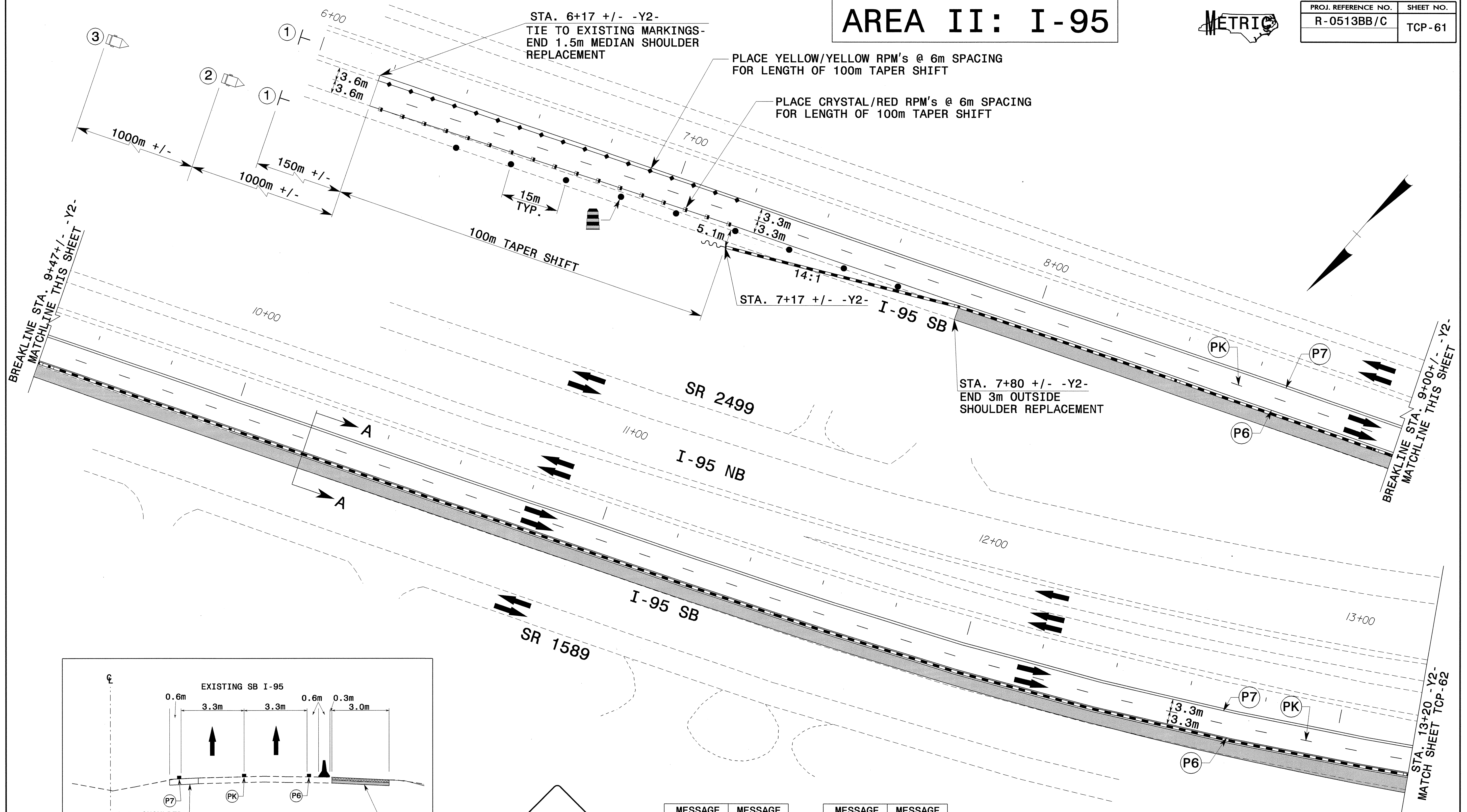


# AREA II: I-95



PROJ. REFERENCE NO.	SHEET NO.
R-0513BB/C	TCP-61



MESSAGE NO. 1	MESSAGE NO. 2
TRAFFIC SHIFT LEFT	1/2 MILE AHEAD
CHANGEABLE MESSAGE SIGN	

MESSAGE NO. 1	MESSAGE NO. 2
TRAFFIC SHIFT LEFT	1 MILE AHEAD
CHANGEABLE MESSAGE SIGN	

1

2

3

APPROVED: *[Signature]* DATE: 7/24/04

SEAL

**PHASE IIA**  
**-Y2- CONSTRUCTION**

SCALE: 1:500  
 DATE: 01-30-04  
 DWG. BY: SBC  
 DESIGN BY: CLM  
 REVIEWED BY: CLM

REVISIONS

NO.	DESCRIPTION

CADD FILE

26-JUL-2004 11:11  
 F:\TCP\FINAL TCP\SAR513C\_TC\_TCP061.dgn  
 msfresman AT TETC3233