

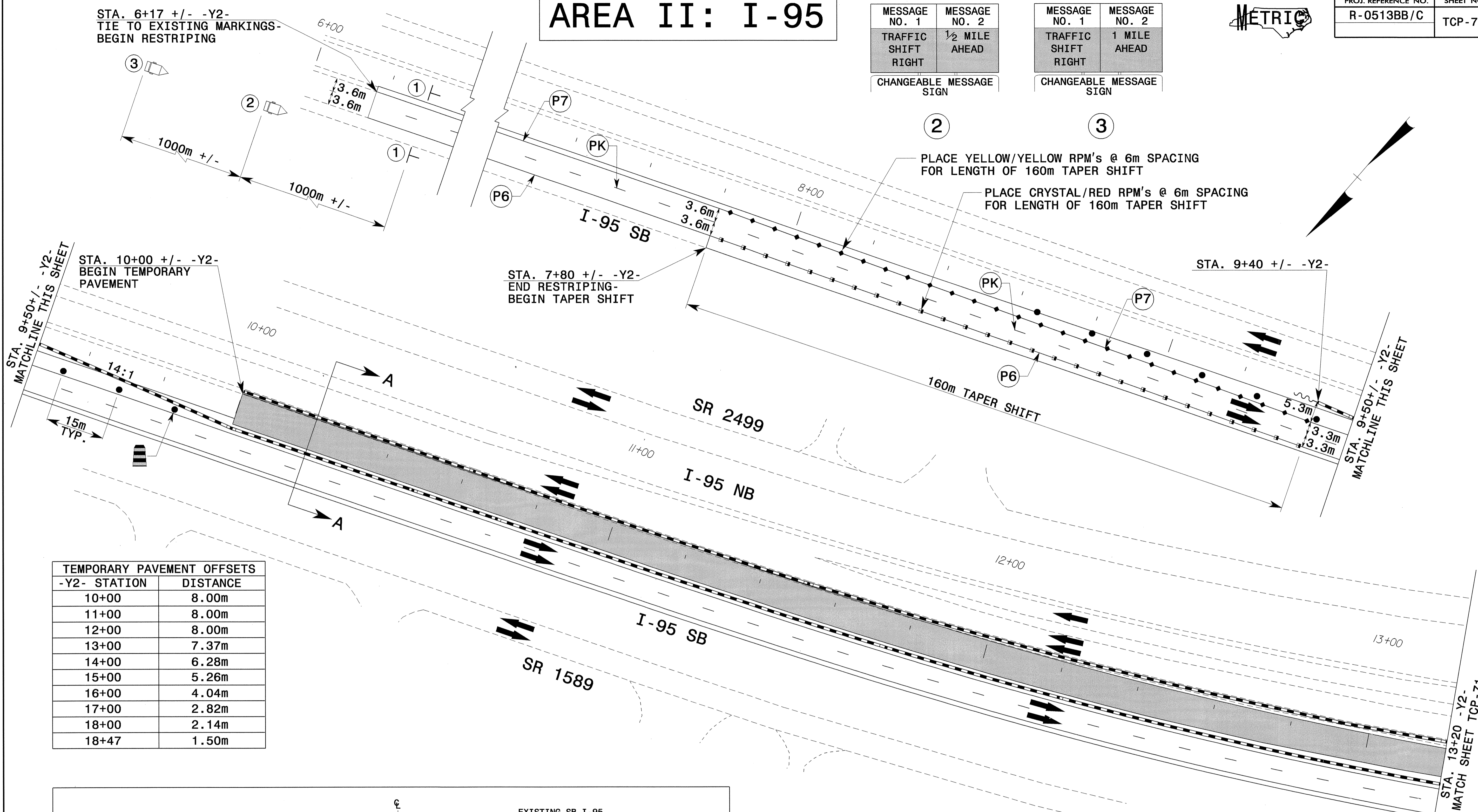
AREA II: I-95



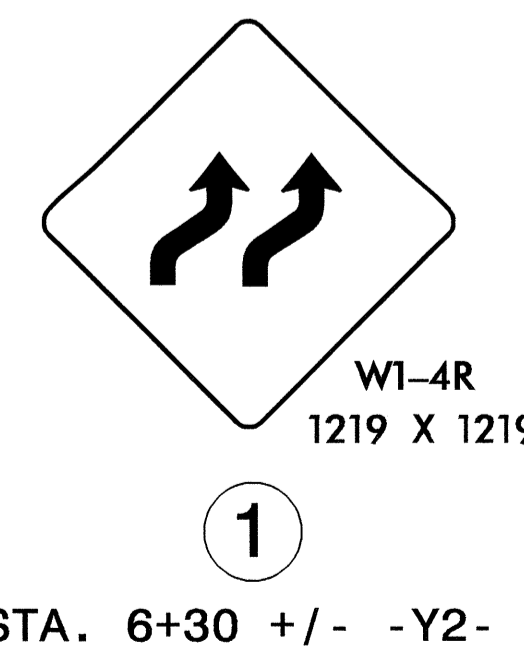
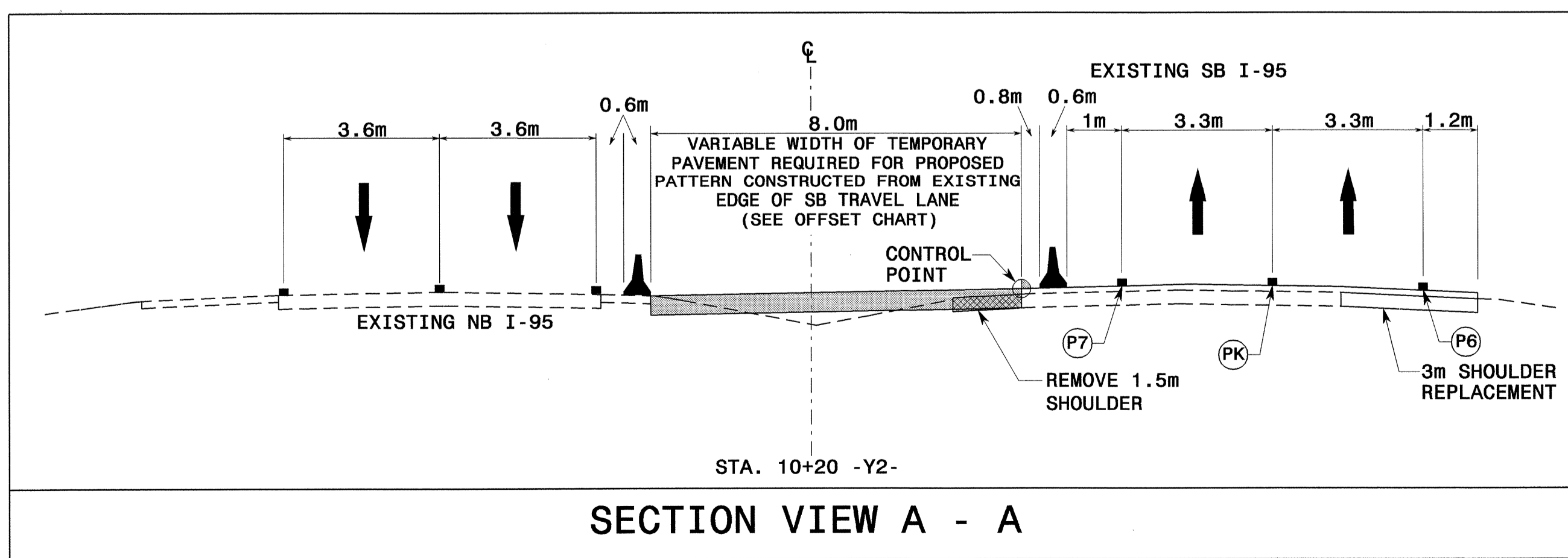
PROJ. REFERENCE NO.	SHEET NO.
R-0513BB/C	TCP-70

MESSAGE NO. 1	MESSAGE NO. 2
TRAFFIC SHIFT RIGHT	1/2 MILE AHEAD
CHANGEABLE MESSAGE SIGN	

MESSAGE NO. 1	MESSAGE NO. 2
TRAFFIC SHIFT RIGHT	1 MILE AHEAD
CHANGEABLE MESSAGE SIGN	



-Y2- STATION	DISTANCE
10+00	8.00m
11+00	8.00m
12+00	8.00m
13+00	7.37m
14+00	6.28m
15+00	5.26m
16+00	4.04m
17+00	2.82m
18+00	2.14m
18+47	1.50m



NOTE:
ADJUSTMENT OF TRAFFIC CONTROL DEVICES MAY BE NECESSARY FOR CONSTRUCTION OF TEMP. DESIGN BUILD MEDIAN CROSSOVER NORTH OF I-95 CONSTRUCTION LIMITS

APPROVED: [Signature] DATE: [Date]
SEAL [Professional Engineer Seal]

PHASE IIB -Y2- CONSTRUCTION

SCALE: 1:500	REVISIONS
DATE: 01-30-04	
DWG. BY: SBC	
DESIGN BY: CLM	
REVIEWED BY: CLM	

24-JUN-2004 11:57 FAX: TCP\FINAL TCP\SRS13C.IC TCP070.dgn ms:feelmom AT 11/22/03