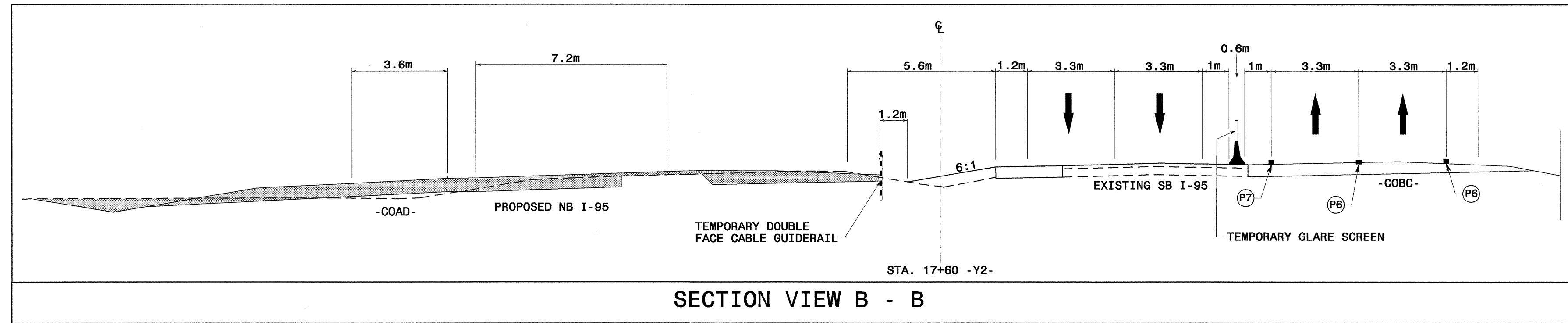


AREA II: I-95



PROJ. REFERENCE NO.	SHEET NO.
R-0513BB/C	TCP-80



STA. 19+40 +/- -Y2-
TEMP. DOUBLE FACE CABLE
GUIDERAIL 1.2m LEFT OF
EXISTING DITCH LINE

STA. 19+64 +/- -Y2-
END PCB

STA. 20+28 +/- -Y2-
TIE TO EXISTING MARKINGS

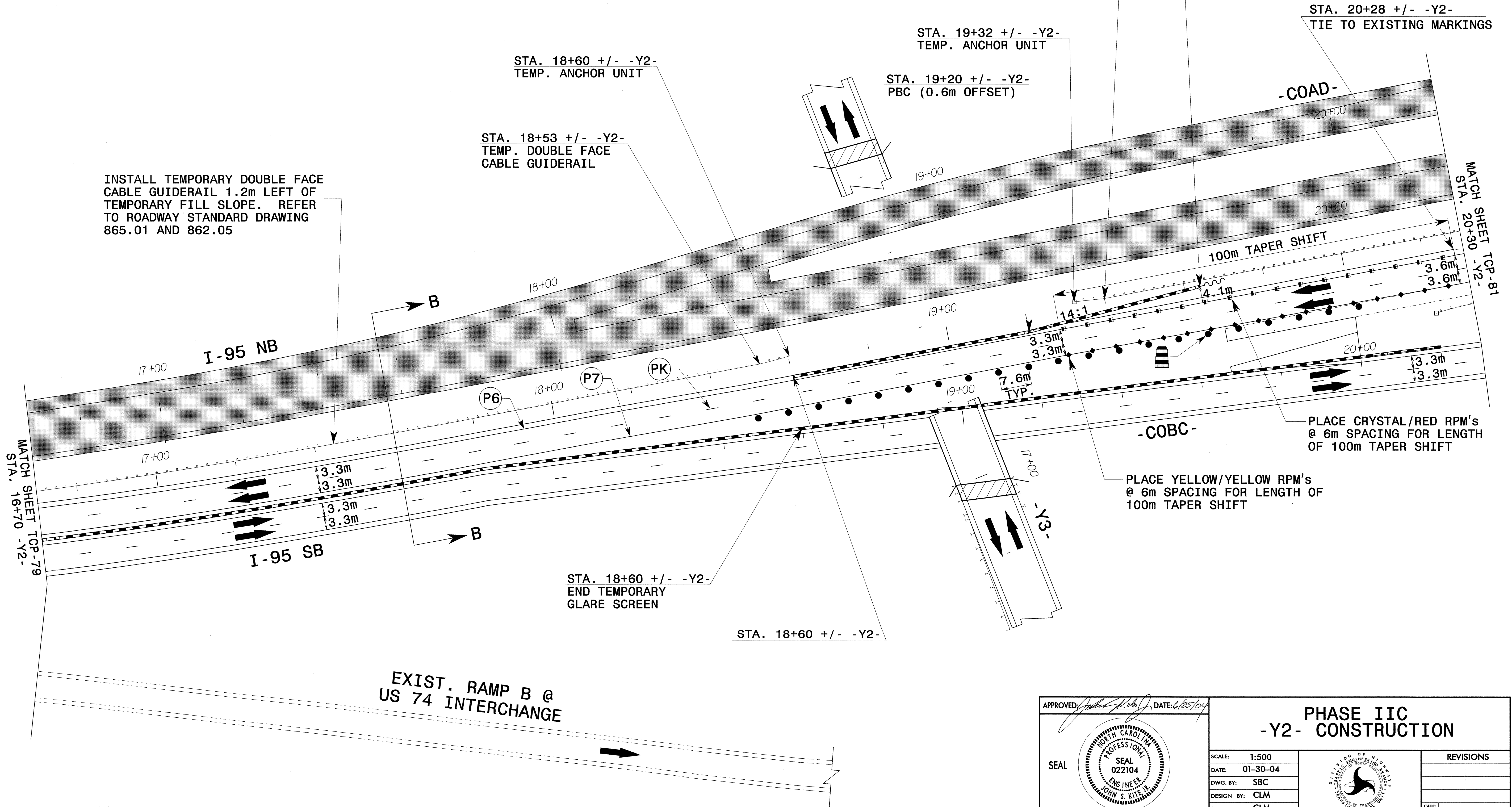
STA. 19+32 +/- -Y2-
TEMP. ANCHOR UNIT

STA. 19+20 +/- -Y2-
PBC (0.6m OFFSET)

STA. 18+60 +/- -Y2-
TEMP. ANCHOR UNIT

STA. 18+53 +/- -Y2-
TEMP. DOUBLE FACE
CABLE GUIDERAIL

INSTALL TEMPORARY DOUBLE FACE
CABLE GUIDERAIL 1.2m LEFT OF
TEMPORARY FILL SLOPE. REFER
TO ROADWAY STANDARD DRAWING
865.01 AND 862.05



25-JUN-2004 14:57
F:\TCP\FINAL TCP\SAR53C.TC.TCP080.dgn
ms:teelmon AT TELC023

APPROVED: *[Signature]* DATE: 6/25/04

SEAL

**PHASE IIC
-Y2- CONSTRUCTION**

SCALE: 1:500		<table border="1"> <tr> <th colspan="2">REVISIONS</th> </tr> <tr> <td> </td> <td> </td> </tr> <tr> <td> </td> <td> </td> </tr> <tr> <td> </td> <td> </td> </tr> <tr> <td> </td> <td> </td> </tr> </table>	REVISIONS									
REVISIONS												
DATE: 01-30-04												
DWG. BY: SBC												
DESIGN BY: CLM												
REVIEWED BY: CLM												

CADD FILE