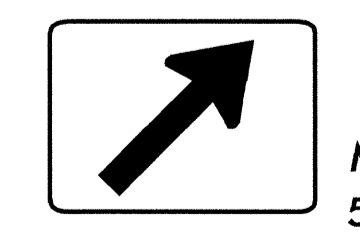
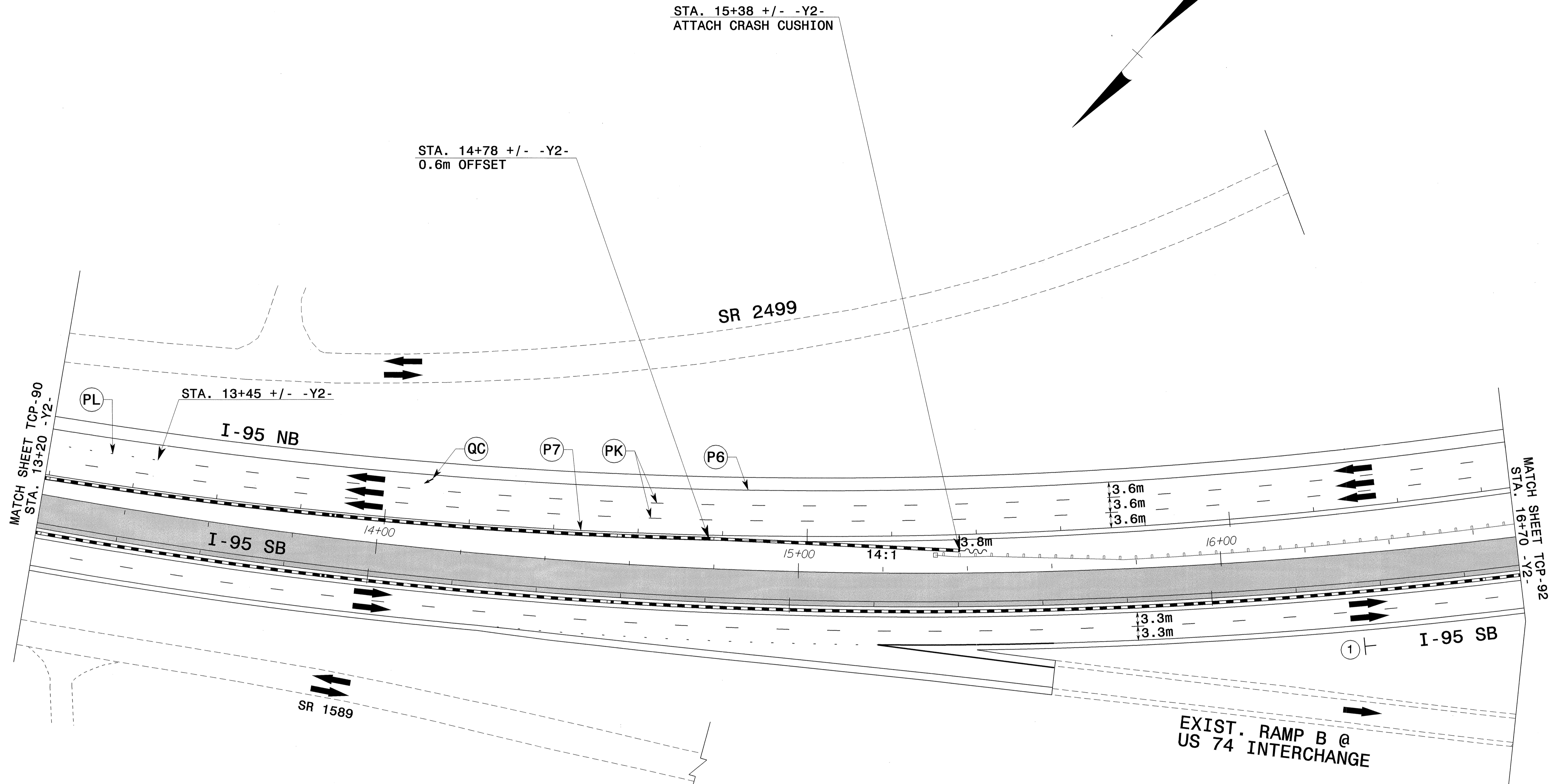


AREA II: I-95



PROJ. REFERENCE NO.	SHEET NO.
R-0513BB/C	TCP-91



MI-1
M6-2
533 X 381
①
STA. 16+30 +/- -Y2-

APPROVED: *John S. Kite, Jr.* DATE: 6/25/04

SEAL

**PHASE IID
-Y2- CONSTRUCTION**

SCALE: 1:500		REVISIONS
DATE: 01-30-04		
DESIGN BY: SBC		
REVIEWED BY: CLM		

24-JUN-2004 12:06
 F:\TCP\FINAL TCP\515536_1C_TCP091.dgn
 mstefelmdn AT TETC1231