



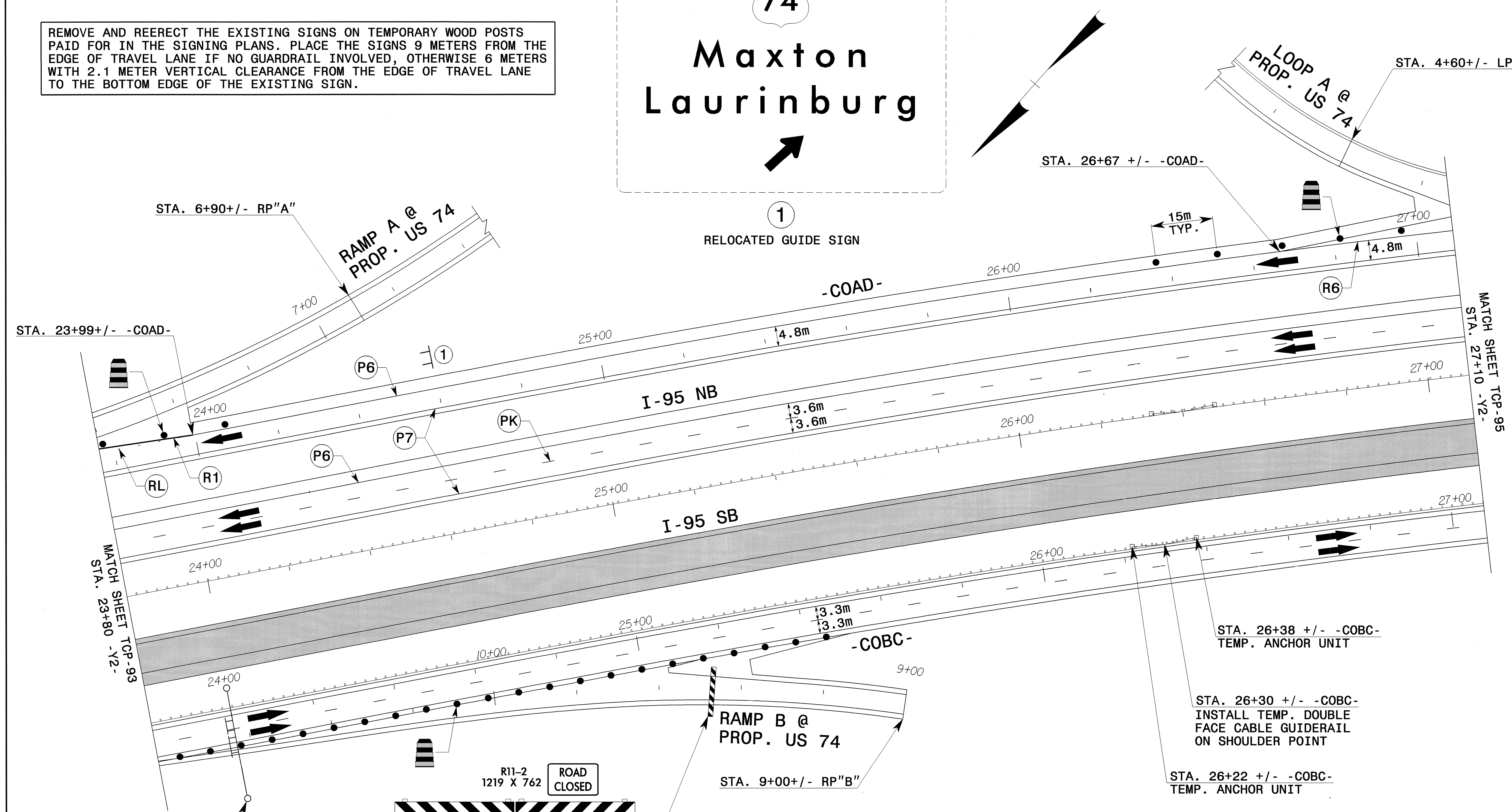
EXIT 14



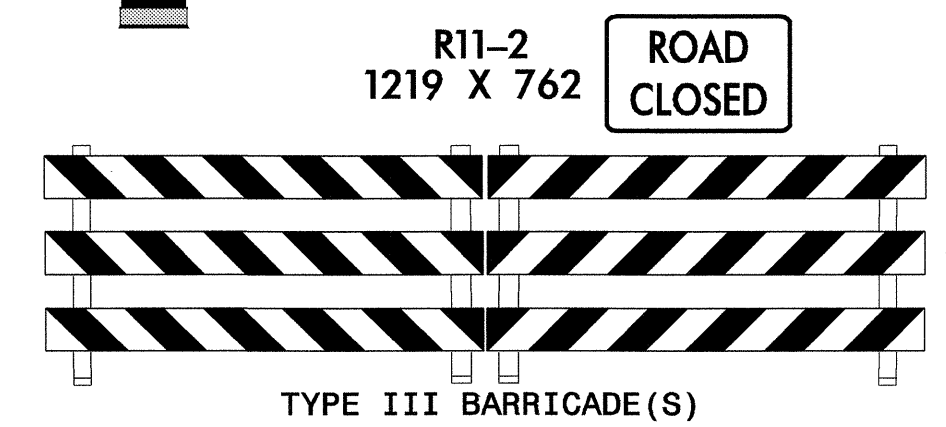
**Maxton
Laurinburg**



REMOVE AND REERECT THE EXISTING SIGNS ON TEMPORARY WOOD POSTS PAID FOR IN THE SIGNING PLANS. PLACE THE SIGNS 9 METERS FROM THE EDGE OF TRAVEL LANE IF NO GUARDRAIL INVOLVED, OTHERWISE 6 METERS WITH 2.1 METER VERTICAL CLEARANCE FROM THE EDGE OF TRAVEL LANE TO THE BOTTOM EDGE OF THE EXISTING SIGN.

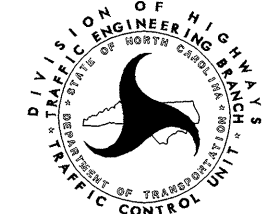


STA. 24+00 +/- -COBC-
CONSTRUCT OVERHEAD SIGN
ASSEMBLY "J"-SEE SIGNING
PLANS



APPROVED: *John S. Kite, Jr.* DATE: 6/25/04

**PHASE IID
-Y2- CONSTRUCTION**

SCALE: 1:500		REVISIONS
DATE: 01-30-04		
DWG. BY: SBC		
DESIGN BY: CLM		
REVIEWED BY: CLM		

CADD FILE: R519C TO Y2 STEP1 SHS.DGN

24-JUN-2004 12:06
 F:\TCP\FINAL TCP\518513C.TC.TCP094.dgn
 mshfeelm AT TETC21231