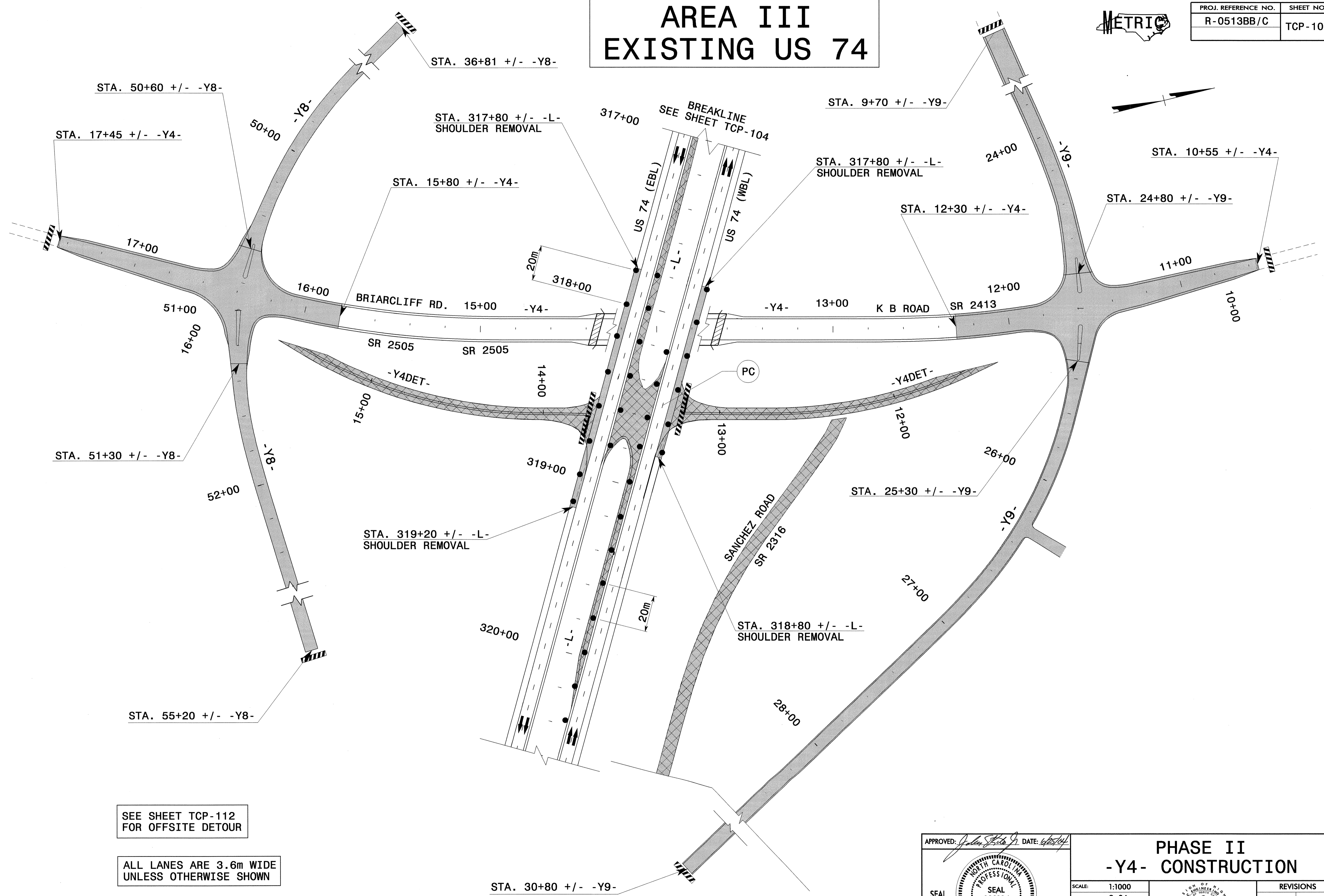


AREA III EXISTING US 74



PROJ. REFERENCE NO. R-0513BB/C	SHEET NO. TCP-105
-----------------------------------	----------------------



SEE SHEET TCP-112
FOR OFFSITE DETOUR

ALL LANES ARE 3.6m WIDE
UNLESS OTHERWISE SHOWN

APPROVED: *John S. Kite Jr.* DATE: 6/25/04

SEAL

PHASE II -Y4- CONSTRUCTION

SCALE: 1:1000		REVISIONS
DATE: 2-04		
DWG. BY: MHS		
DESIGN BY: MHS		
REVIEWED BY: CLM		

CARD FILE: R513C TC Y4 SH10C.DGN

24-JUN-2004 12:12
 FA-TCP\FINAL TCP-R513C-TC-TCP105.dgn
 mstreslin AT 11:17:23