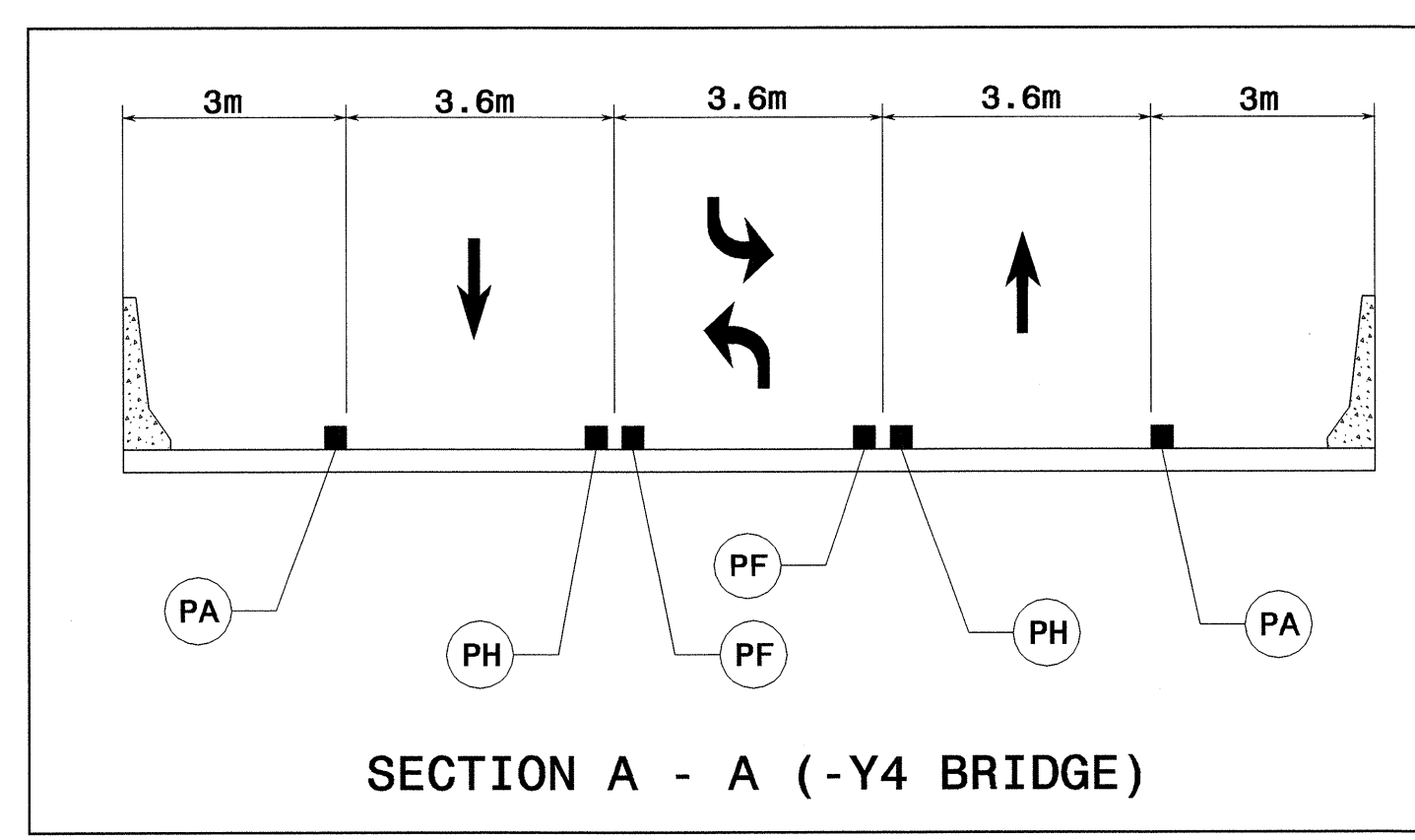
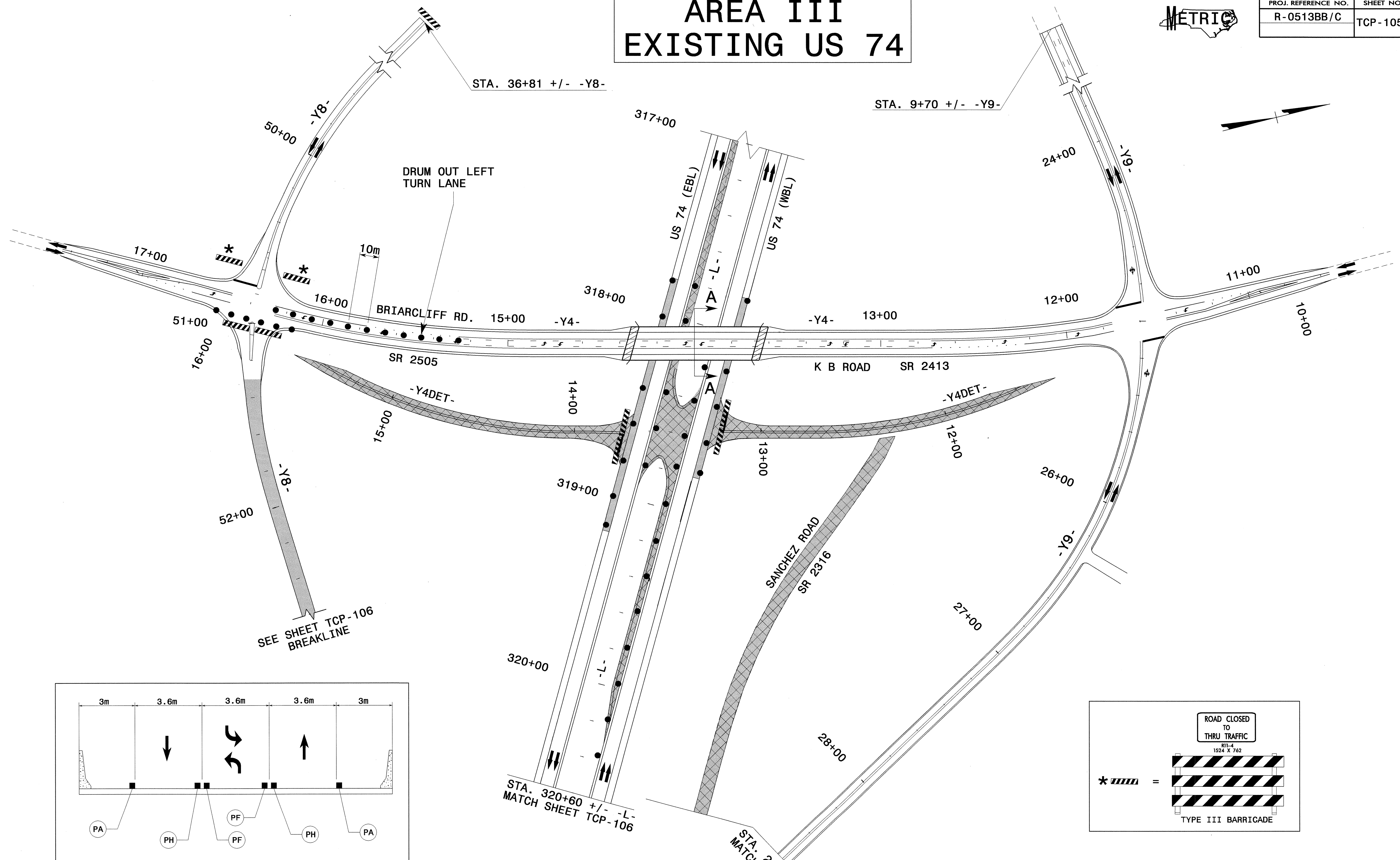


AREA III EXISTING US 74

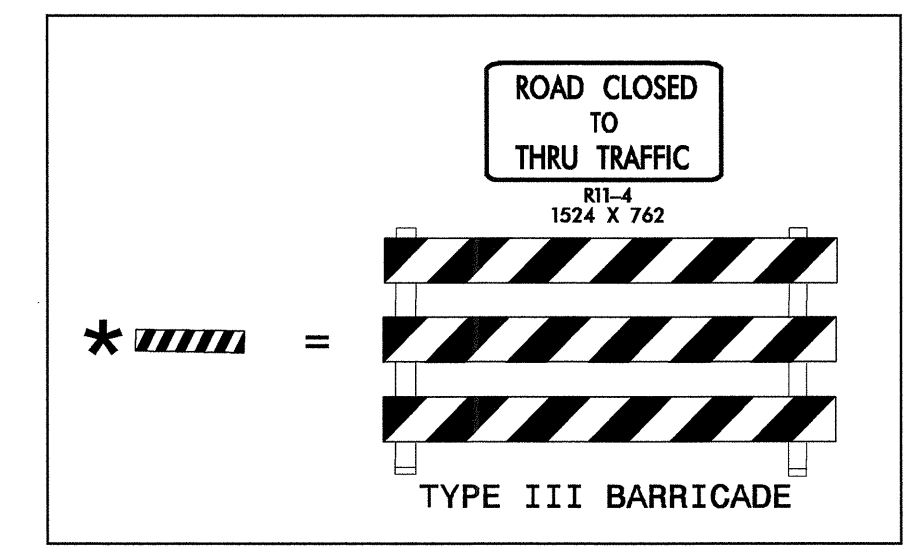


PROJ. REFERENCE NO. R-0513BB/C	SHEET NO. TCP-105A
-----------------------------------	-----------------------



PLACE TEMPORARY PAINT PAVEMENT MARKINGS AND MARKERS ON -Y4-, -Y8- AND -Y9- IN THE FINAL PATTERN. SEE SHEET PMP-12 THROUGH 15 FOR PAVEMENT MARKING STATIONING.

ALL LANES ARE 3.6m WIDE UNLESS OTHERWISE SHOWN



APPROVED: *John S. Lite II* DATE: 4/22/04

PHASE II -Y4- OPENING	
SCALE: 1:1000	REVISIONS
DATE: 2-04	
DWG. BY: MHS	
DESIGN BY: MHS	
REVIEWED BY: CLM	
<small>CADD FILE R513G TC Y4 SH100.DGN</small>	

24-JUN-2004 12:43
 P:\TCPA\FINAL TCP-SR2505-TC-TCP105A.dgn
 mshelmom AT 11:12:23