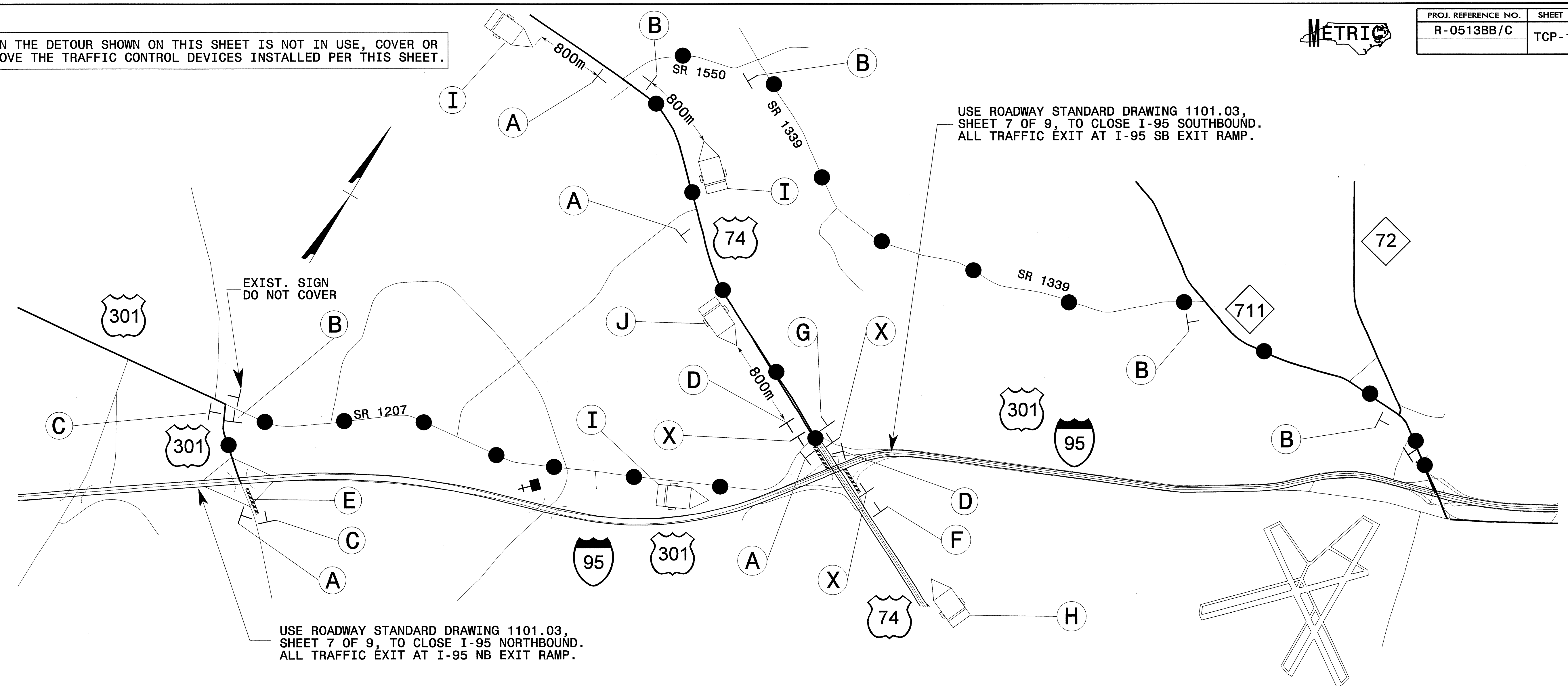




WHEN THE DETOUR SHOWN ON THIS SHEET IS NOT IN USE, COVER OR REMOVE THE TRAFFIC CONTROL DEVICES INSTALLED PER THIS SHEET.



| <p>A =</p> | <p>C =</p> | <p>F =</p> | <p>G =</p> | <p>I =</p> <table border="1"> <tr> <th colspan="2">SUGGESTED MESSAGES</th> </tr> <tr> <td>MESSAGE NO. 1</td> <td>MESSAGE NO. 2</td> </tr> <tr> <td>NB I-95 TRAFFIC</td> <td>DETOUR 1/2 MILE AHEAD</td> </tr> </table> <p>CHANGEABLE MESSAGE SIGN</p> | SUGGESTED MESSAGES | | MESSAGE NO. 1 | MESSAGE NO. 2 | NB I-95 TRAFFIC | DETOUR 1/2 MILE AHEAD | <p>J =</p> <table border="1"> <tr> <th colspan="2">SUGGESTED MESSAGES</th> </tr> <tr> <td>MESSAGE NO. 1</td> <td>MESSAGE NO. 2</td> </tr> <tr> <td>SB I-95 TRAFFIC</td> <td>DETOUR 1/2 MILE AHEAD</td> </tr> </table> <p>CHANGEABLE MESSAGE SIGN</p> | SUGGESTED MESSAGES | | MESSAGE NO. 1 | MESSAGE NO. 2 | SB I-95 TRAFFIC | DETOUR 1/2 MILE AHEAD |
|----------------------|-----------------------|-------------------|---|---|--------------------|---------------|---------------|----------------------|------------------|---|---|--------------------|--|---------------|---------------|-----------------|-----------------------|
| SUGGESTED MESSAGES | | | | | | | | | | | | | | | | | |
| MESSAGE NO. 1 | MESSAGE NO. 2 | | | | | | | | | | | | | | | | |
| NB I-95 TRAFFIC | DETOUR 1/2 MILE AHEAD | | | | | | | | | | | | | | | | |
| SUGGESTED MESSAGES | | | | | | | | | | | | | | | | | |
| MESSAGE NO. 1 | MESSAGE NO. 2 | | | | | | | | | | | | | | | | |
| SB I-95 TRAFFIC | DETOUR 1/2 MILE AHEAD | | | | | | | | | | | | | | | | |
| <p>B =</p> | <p>D =</p> | <p>E =</p> | <p>H =</p> <table border="1"> <tr> <th colspan="2">SUGGESTED MESSAGES</th> </tr> <tr> <td>MESSAGE NO. 1</td> <td>MESSAGE NO. 2</td> </tr> <tr> <td>NB & SB I-95 TRAFFIC</td> <td>USE DETOUR ROUTE</td> </tr> </table> <p>CHANGEABLE MESSAGE SIGN</p> | SUGGESTED MESSAGES | | MESSAGE NO. 1 | MESSAGE NO. 2 | NB & SB I-95 TRAFFIC | USE DETOUR ROUTE | <p>X = SIGNS INSTALLED PER SHEET TCP-108. COVER THESE SIGNS DURING OPERATION OF THIS DETOUR. UNCOVER THESE SIGNS WHEN THIS DETOUR IS NOT IN OPERATION.</p> | | | | | | | |
| SUGGESTED MESSAGES | | | | | | | | | | | | | | | | | |
| MESSAGE NO. 1 | MESSAGE NO. 2 | | | | | | | | | | | | | | | | |
| NB & SB I-95 TRAFFIC | USE DETOUR ROUTE | | | | | | | | | | | | | | | | |

DETOUR ROUTE = ● — ● — ●

24-JUN-2004 12:45 P:\TCP\FINAL TCP\SR513C.TC.TCP109.dgn mstfeilmom AT TETC1231

APPROVED: *John S. Kite, Jr.* DATE: 03/04

PHASE II
I-95 OFFSITE DETOUR SIGNING
DURING REMOVAL OF US 74 BRIDGE

| | | |
|------------------|--|-----------|
| SCALE: NONE | | REVISIONS |
| DATE: 03/04 | | |
| DWG. BY: SJS | | |
| DESIGN BY: SJS | | |
| REVIEWED BY: CLM | | |