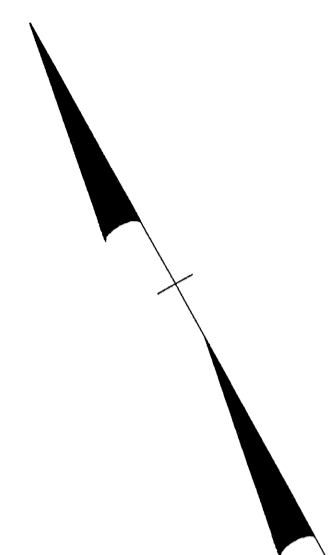
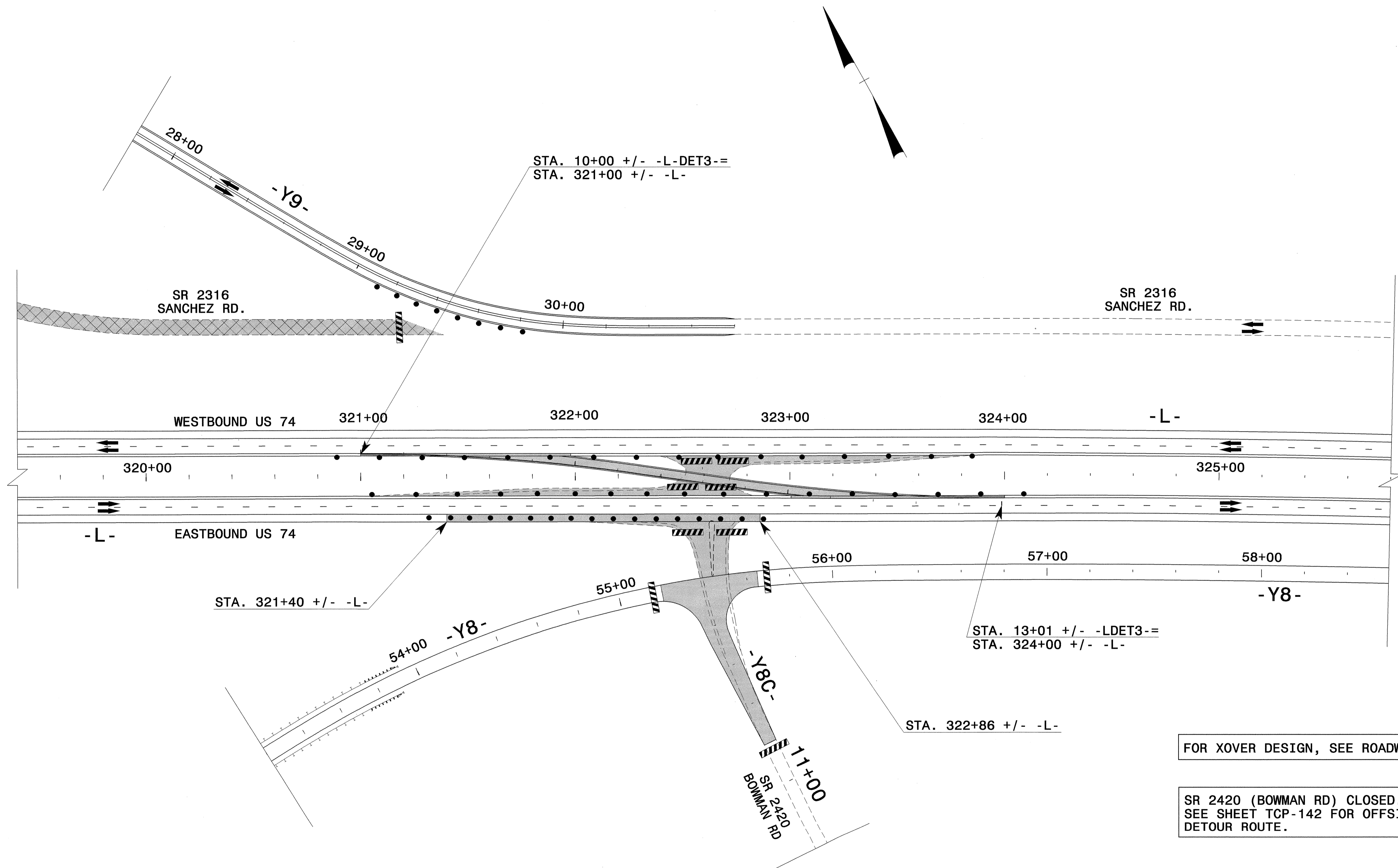




PROJ. REFERENCE NO.	SHEET NO.
R-0513BB/C	TCP-123



FOR XOVER DESIGN, SEE ROADWAY PLANS

SR 2420 (BOWMAN RD) CLOSED.
SEE SHEET TCP-142 FOR OFFSITE
DETOUR ROUTE.

24-JUN-2004 12:20
 F:\TCP\FINAL TCP\5135135.TC.TCP123.dgn
 msfelemon AT JETC21231

APPROVED: *[Signature]* DATE: 6/25/04

SEAL

PHASE III
-L- XOVER CONSTRUCTION

SCALE:	NONE		REVISIONS
DATE:	2-04		
DWG. BY:	MHS		
DESIGN BY:	MHS		
REVIEWED BY:	CLM		

CARD FILE R-0513C TC LTCP20.DGN