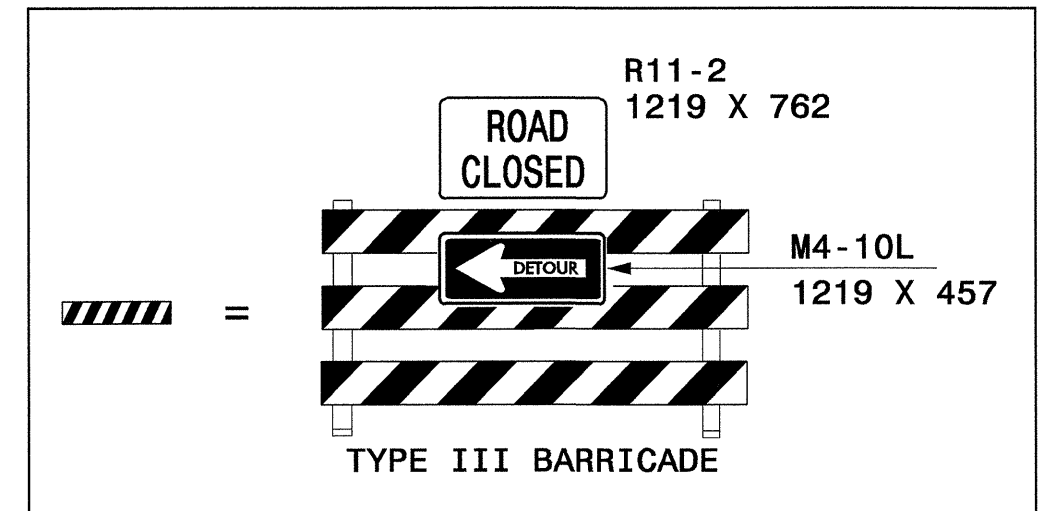
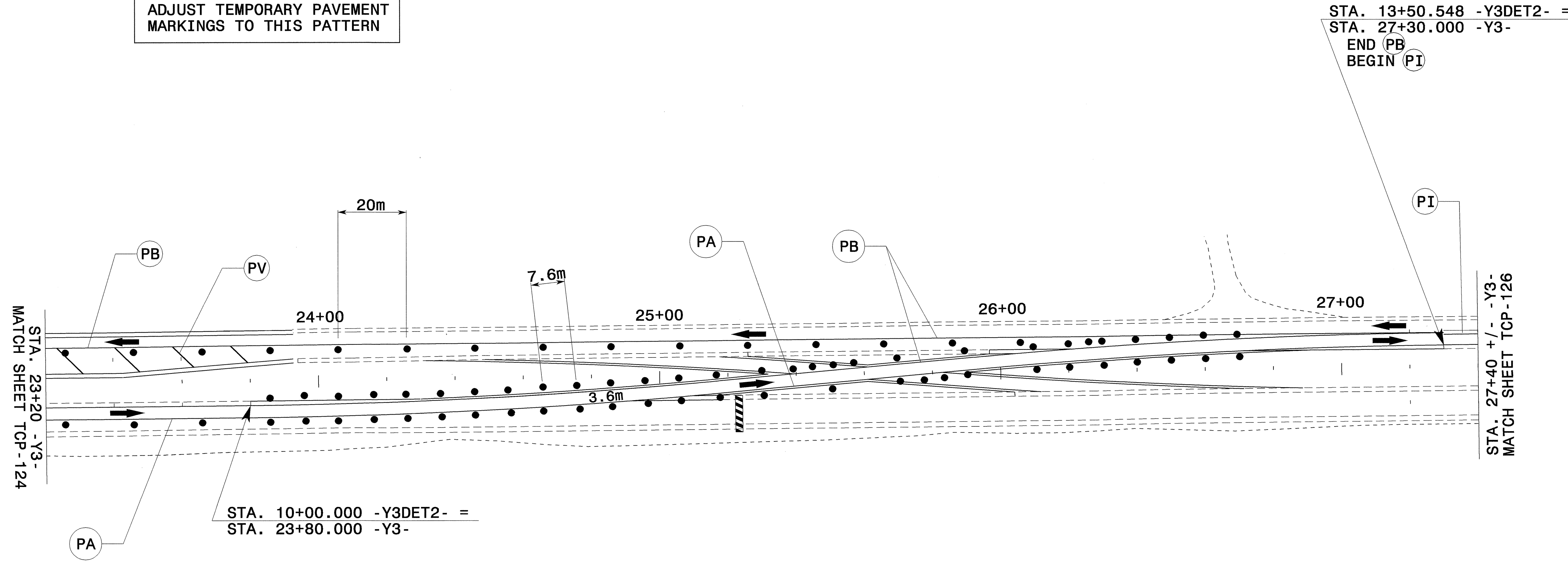




PROJ. REFERENCE NO.	SHEET NO.
R-0513BB/C	TCP-125

SEE SHEET TCP-140 AND 140A FOR TRAFFIC CONTROL DEVICES AND ADVANCED WARNING SIGNING ASSOCIATED WITH TEMPORARY CROSSOVER.

ADJUST TEMPORARY PAVEMENT MARKINGS TO THIS PATTERN



ALL LANES ARE 3.6m WIDE UNLESS OTHERWISE SHOWN

SEE ROADWAY PLANS FOR -Y3DET1 & 2 ALIGNMENTS

APPROVED: *John S. Kite, Jr.* DATE: 4/25/04

PHASE III -Y3- CONSTRUCTION							
SCALE: NONE							
DATE: 2-04							
DESIGN BY: MHS							
REVIEWED BY: CLM							
<table border="1"> <thead> <tr> <th colspan="2">REVISIONS</th> </tr> </thead> <tbody> <tr> <td> </td> <td> </td> </tr> <tr> <td> </td> <td> </td> </tr> </tbody> </table>		REVISIONS					
REVISIONS							
<small>CADD FILE: R513C TC Y3_SH4F.DGN</small>							

24-JUN-2004 12:21
 F:\TCP\FINAL TCP\SR513C\TC-TCP125.dgn
 ms:reelmdn AT:TEFC21231