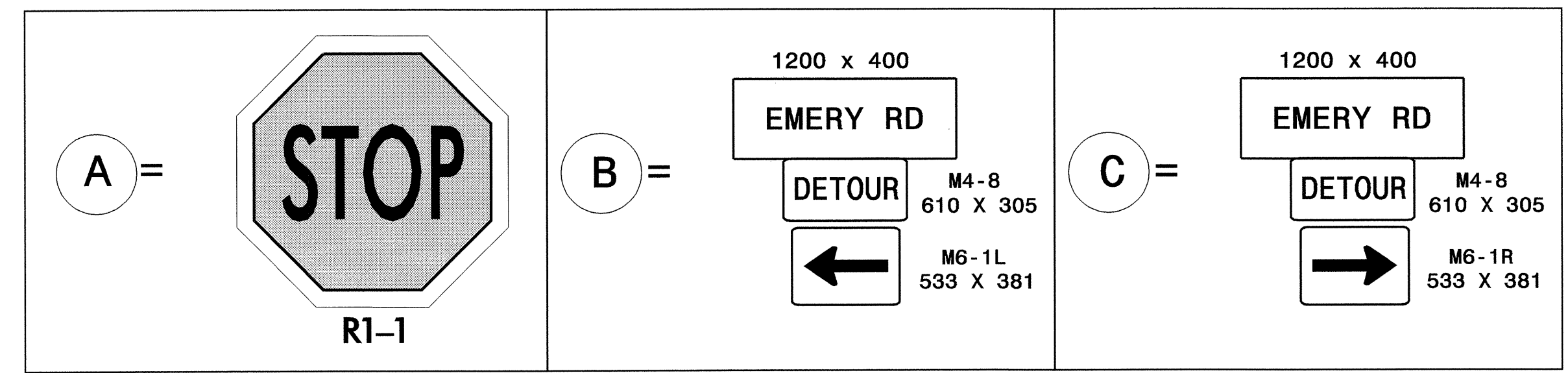
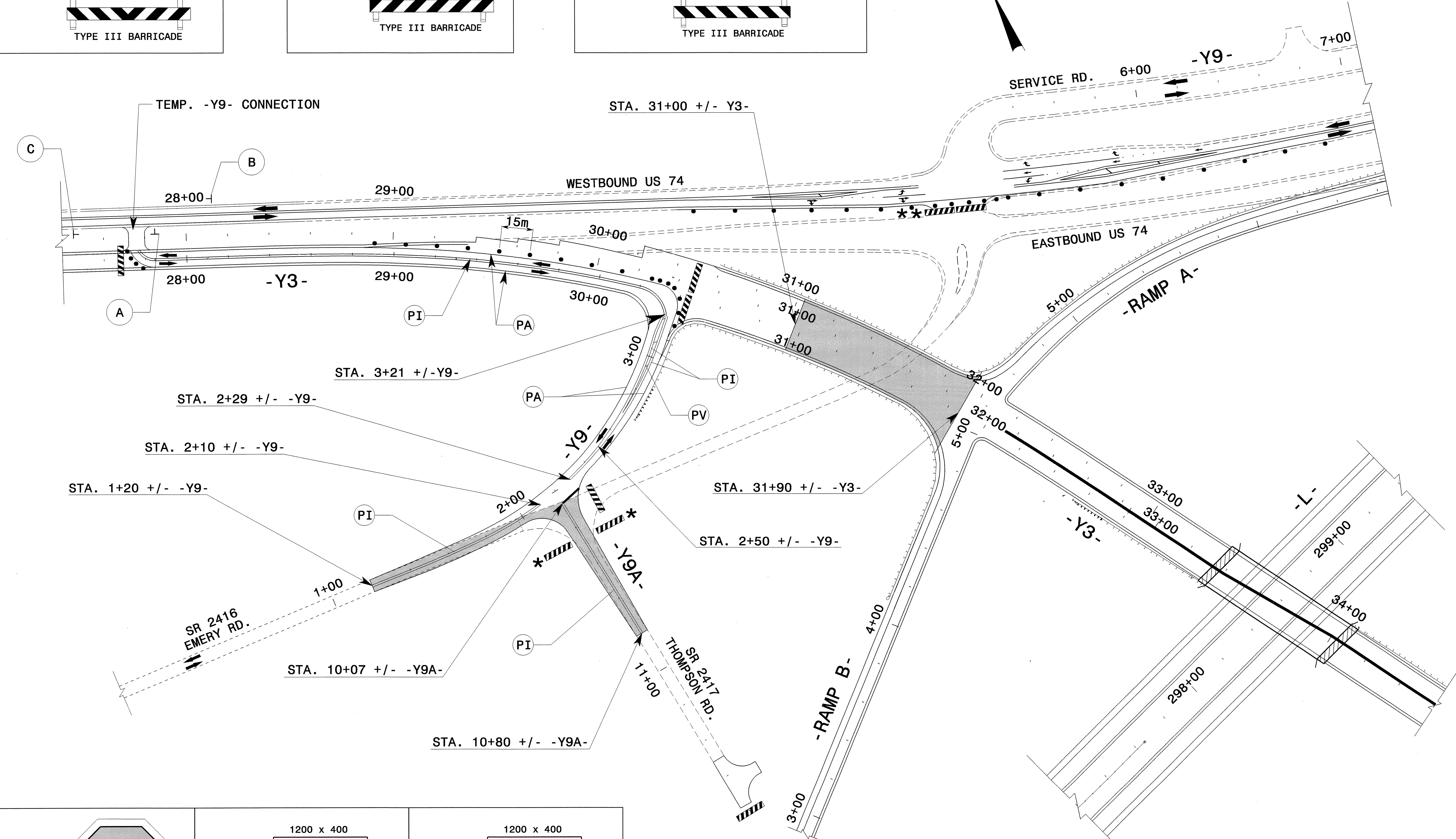
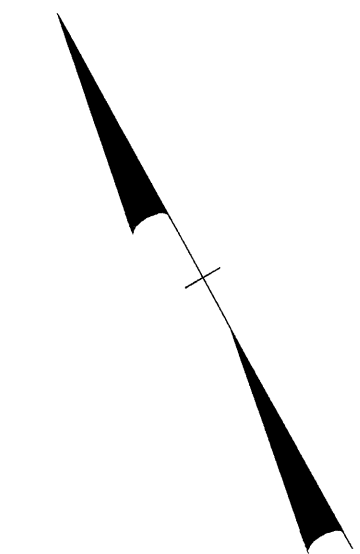
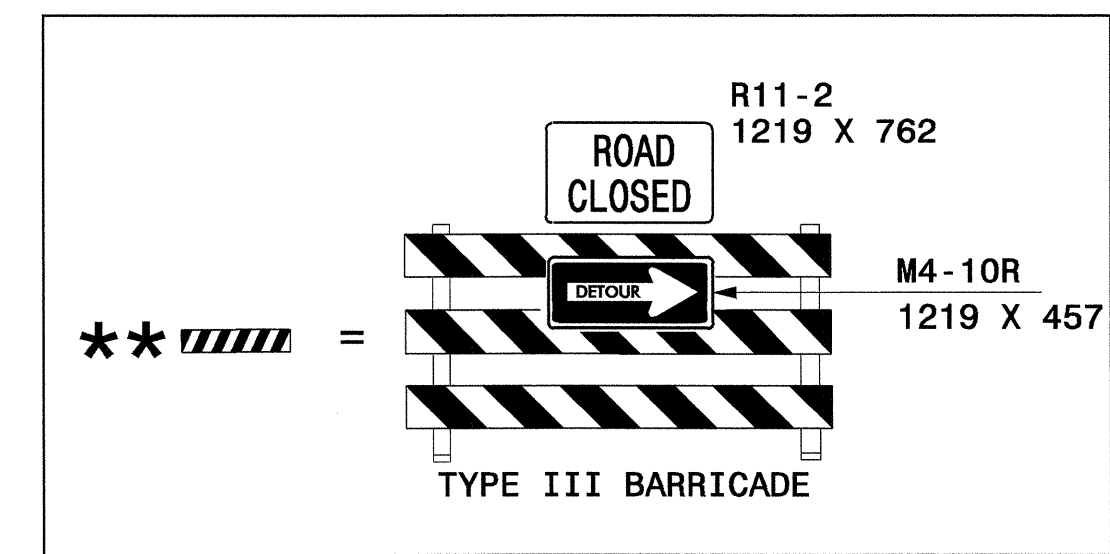
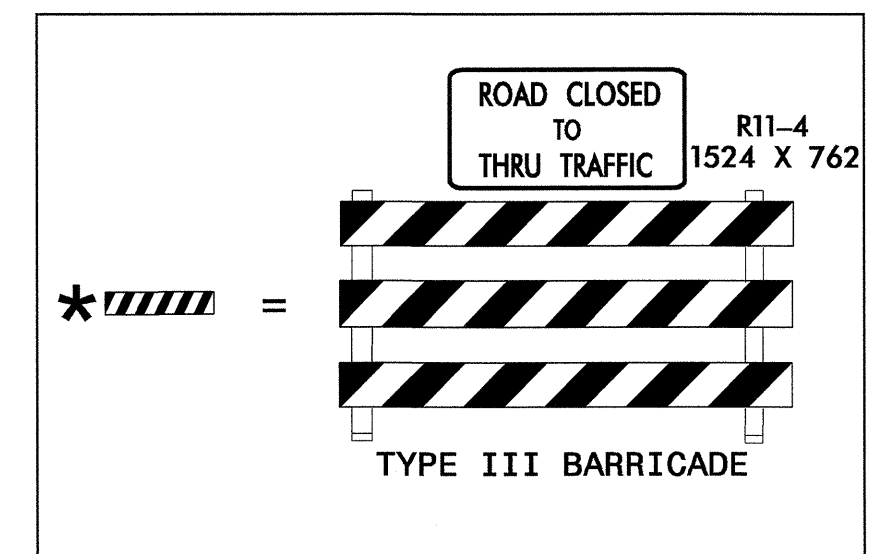
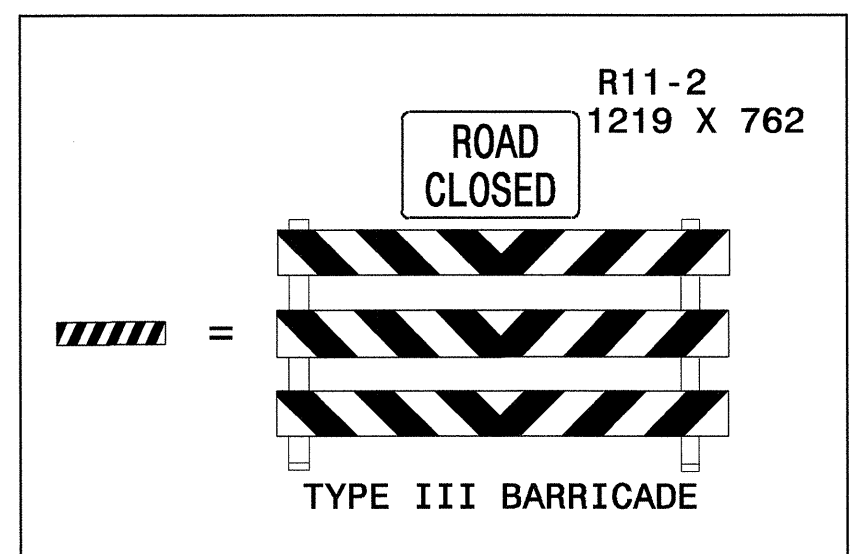




|                     |           |
|---------------------|-----------|
| PROJ. REFERENCE NO. | SHEET NO. |
| R-0513C             | TCP-126A  |



ALL LANES ARE 3.6m WIDE UNLESS OTHERWISE SHOWN

APPROVED: *[Signature]* DATE: 6/25/04

SEAL  
STATE OF NORTH CAROLINA  
PROFESSIONAL ENGINEER  
JOHN S. KITE  
022104

PHASE III  
EASTBOUND -Y3- TIE-IN CONSTRUCTION

|                  |  |           |
|------------------|--|-----------|
| SCALE: NONE      |  | REVISIONS |
| DATE: 11-03      |  |           |
| DWG. BY: MHS     |  |           |
| DESIGN BY: MHS   |  |           |
| REVIEWED BY: CLM |  |           |

CADD FILE: R619C TC -Y3- SH111.DGN

24-JUN-2004 12:25  
 F:\TCP\FINAL TCP-S\0513C\_TC-TCP126A.dgn  
 mshelmann AT TELC0231