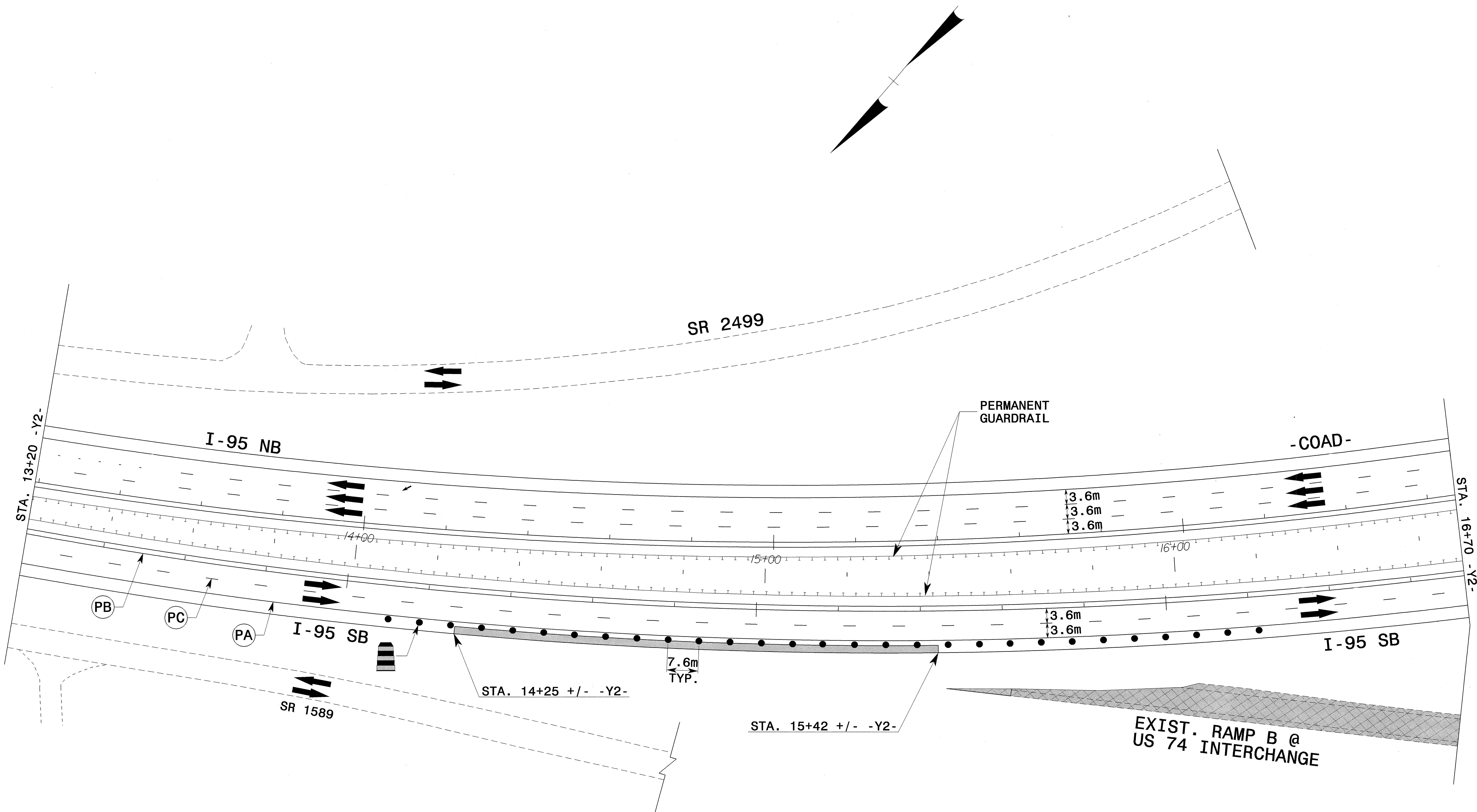




PROJ. REFERENCE NO.	SHEET NO.
R-0513BB/C	TCP-130



-L- WESTBOUND (NEW LOCATION) IS OPEN FROM -Y2- (I-95) TO THE -Y5- (DEW RD.) INTERCHANGE.  
 -L- EASTBOUND (NEW LOCATION) IS OPEN FROM -Y5- (DEW RD.) TO THE END OF THE PROJECT.  
 TRAFFIC FORMERLY USING EXISTING RAMP B TO ACCESS US 74 WILL USE EITHER PROPOSED -RAMP B- OR -LOOP C- TO ACCESS US 74.

APPROVED: *[Signature]* DATE: 6/20/04

**PHASE III  
-Y2- CONSTRUCTION**

SCALE: 1:500		REVISIONS
DATE: 01-30-04		
DWG. BY: SBC		
DESIGN BY: CLM		
REVIEWED BY: CLM		

24-JUN-2004 13:24  
 F:\TCP\FINAL TCP\SR953C.TC.TCP130.dgn  
 msf:selman AT TETC12531