

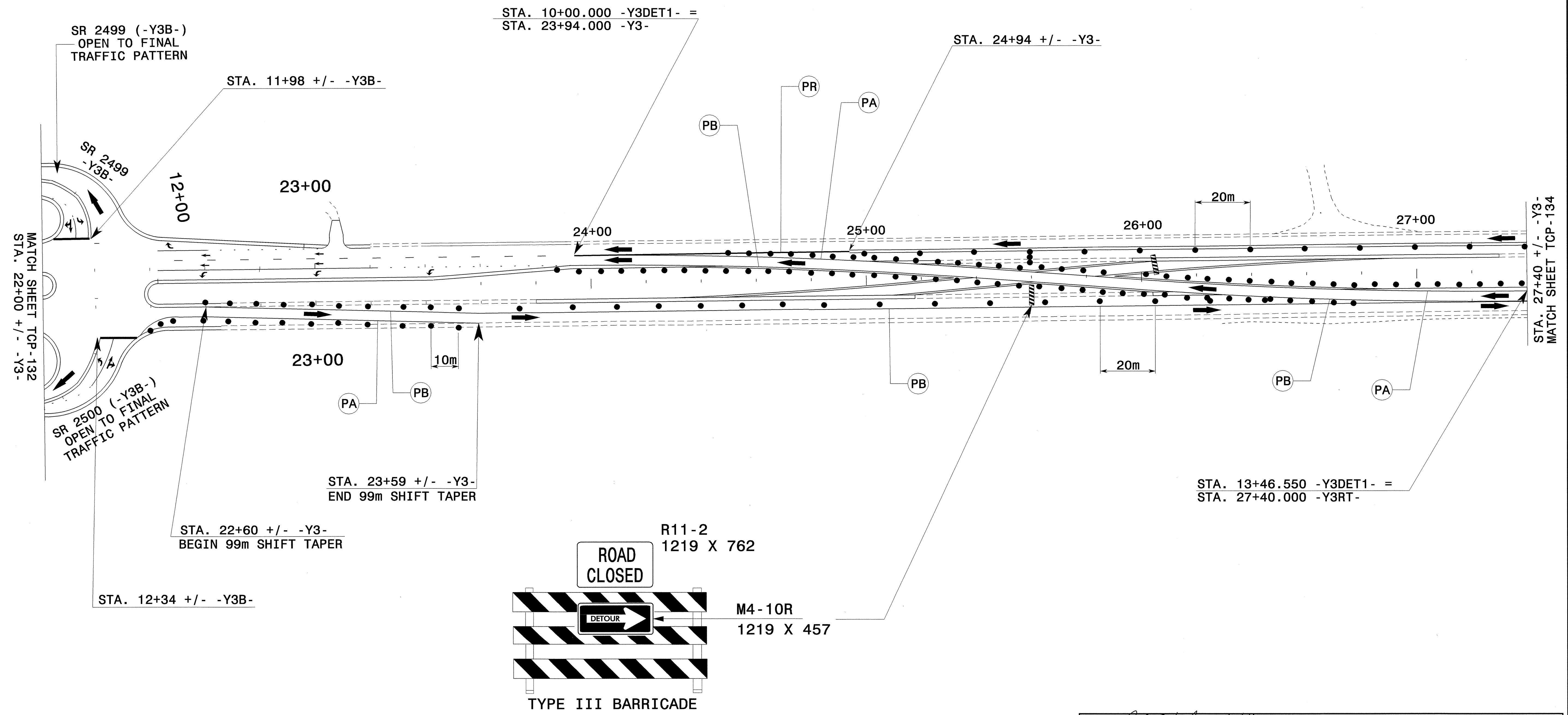


INSTALL TEMPORARY PAINT PAVEMENT MARKINGS IN THE FINAL PATTERN AT THE FOLLOWING LOCATIONS. SEE PMP-23 FOR PAVEMENT MARKING STATIONING.

- Y3- STA. 19+08 +/- TO STA. 23+94 +/-
- Y3B- STA. 10+00 +/- TO STA. 11+98 +/-
- Y3B- STA. 12+34 +/- TO STA. 14+18 +/-

SEE ROADWAY PLANS FOR -Y3DET1 & 2 ALIGNMENTS

SEE SHEET TCP-141 FOR TRAFFIC CONTROL DEVICES AND SIGNING ASSOCIATED WITH THE CROSS OVER.



24-JUN-2004 12:25 FN:TCP\FINAL TCP\513BB\C.TCP133.dgn mstrelmon AT:JETC12231

APPROVED: DATE: 4/27/04 	PHASE III -Y3- CONSTRUCTION							
	SCALE: NONE DATE: 2-04 DWG. BY: MHS DESIGN BY: MHS REVIEWED BY: CLM		REVISIONS <table border="1"> <tr><td> </td><td> </td></tr> <tr><td> </td><td> </td></tr> <tr><td> </td><td> </td></tr> </table>					

CARD FILE: R513C TC TCP129.DGN