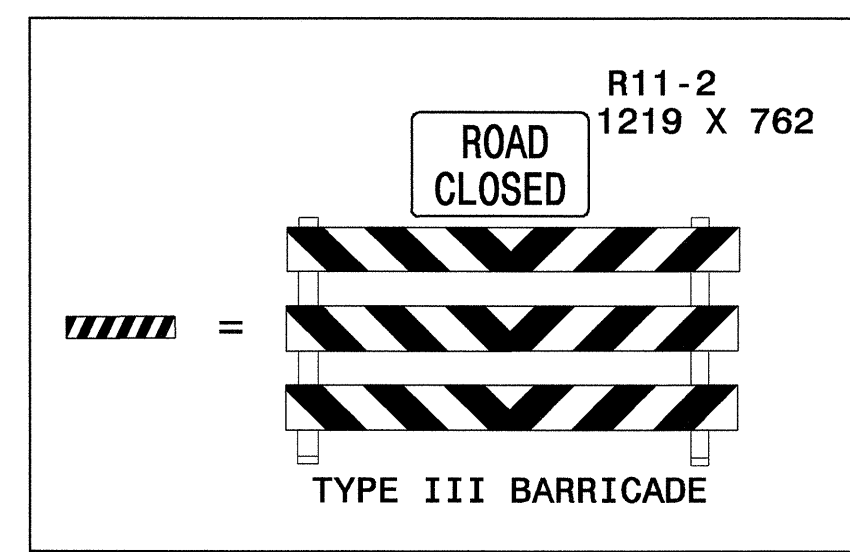
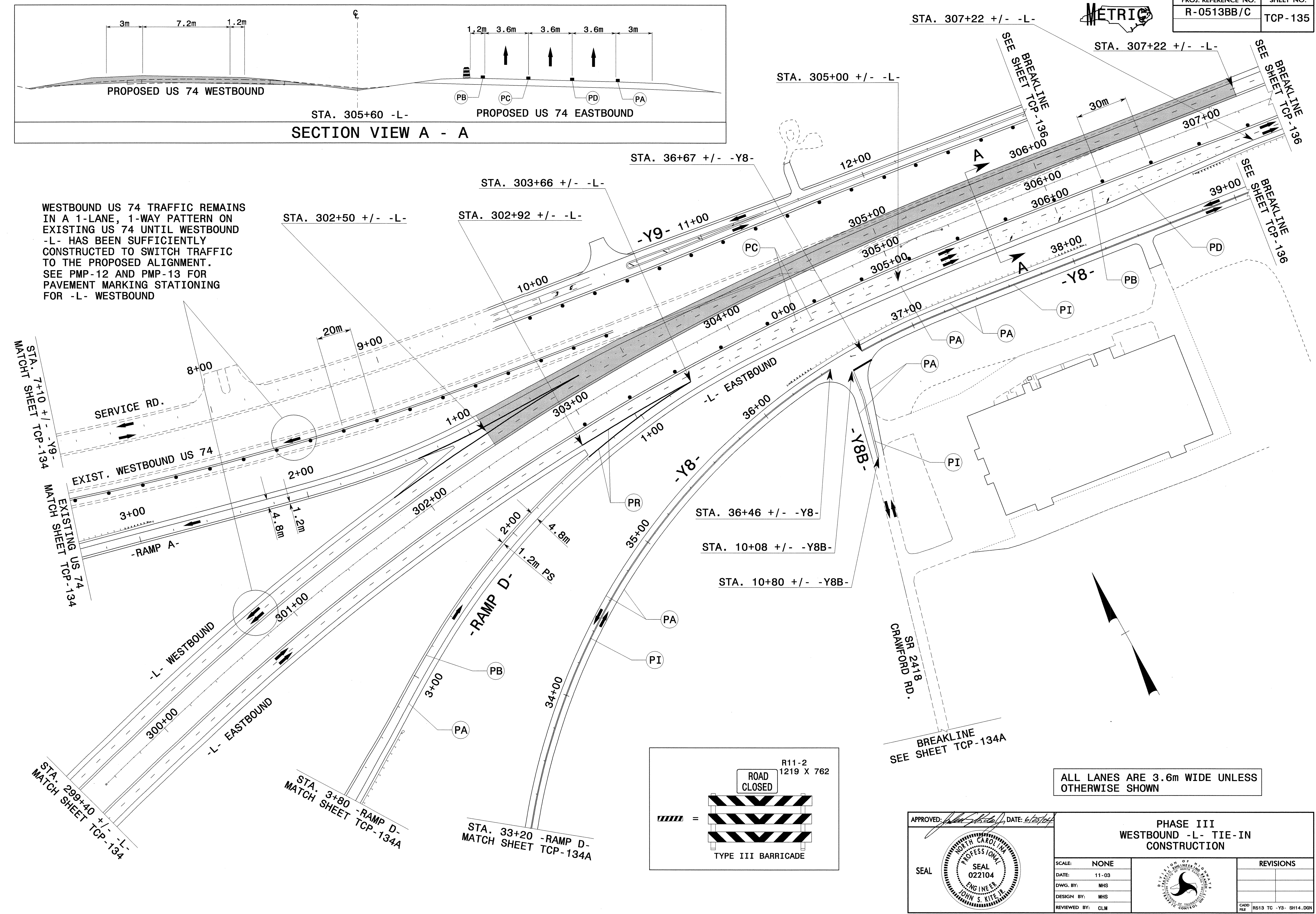


WESTBOUND US 74 TRAFFIC REMAINS IN A 1-LANE, 1-WAY PATTERN ON EXISTING US 74 UNTIL WESTBOUND -L- HAS BEEN SUFFICIENTLY CONSTRUCTED TO SWITCH TRAFFIC TO THE PROPOSED ALIGNMENT. SEE PMP-12 AND PMP-13 FOR PAVEMENT MARKING STATIONING FOR -L- WESTBOUND



ALL LANES ARE 3.6m WIDE UNLESS OTHERWISE SHOWN

APPROVED: *[Signature]* DATE: 6/25/04

SEAL

PHASE III WESTBOUND -L- TIE-IN CONSTRUCTION		REVISIONS
SCALE: NONE	DATE: 11-03	
DWG. BY: MHS	DESIGN BY: MHS	
REVIEWED BY: CLM		
CADD FILE: R513 TC -Y3- SH14.DGN		

24-JUN-2004 10:27
 F:\TCP\FINAL TCP\SR513C_TC_TCP135.dgn
 msteelman AT TETC123