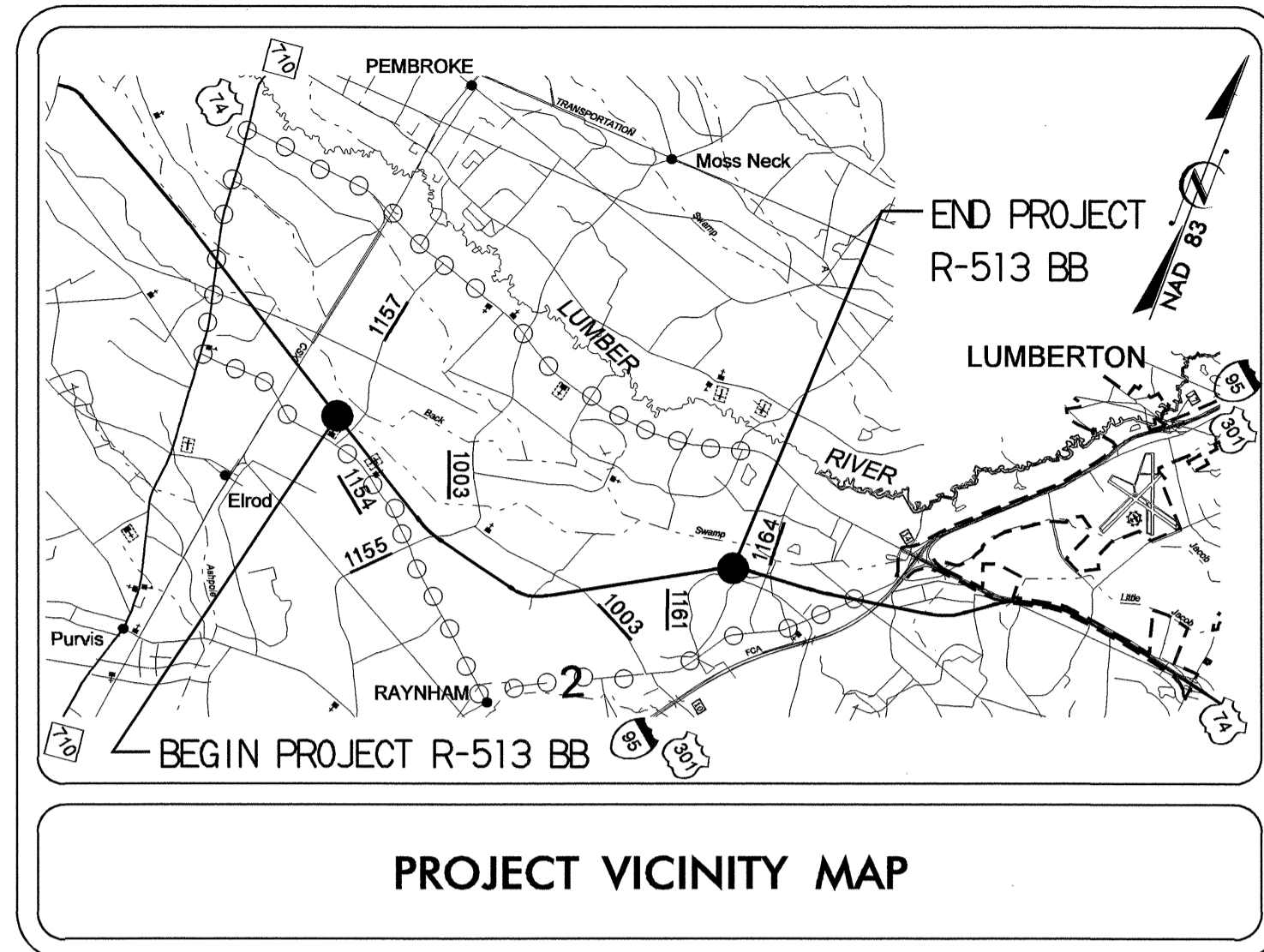


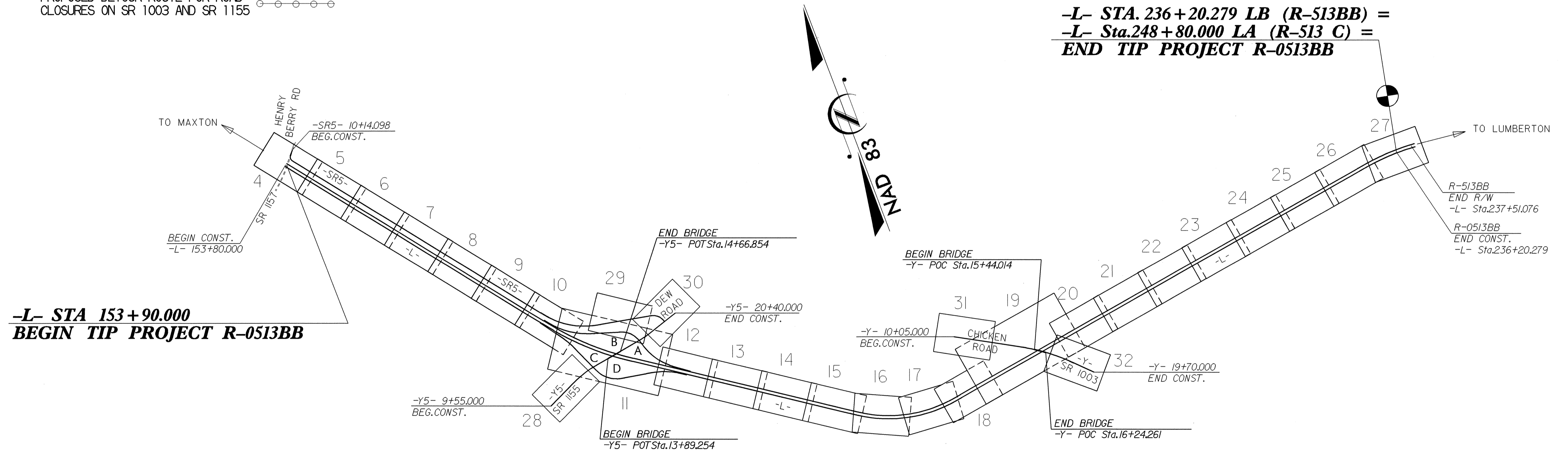
9/09/99

See Sheet 1-A For Index of Sheets  
See Sheet 1-B For Conventional Symbols



PROJECT VICINITY MAP

PROPOSED DETOUR ROUTE FOR ROAD CLOSURES ON SR 1003 AND SR 1155



**-L- STA. 236+20.279 LB (R-513BB) =**  
**-L- Sta.248+80.000 LA (R-513 C) =**  
**END TIP PROJECT R-0513BB**

**-L- STA 153+90.000**  
**BEGIN TIP PROJECT R-0513BB**

THIS IS A FULL CONTROLLED-ACCESS PROJECT WITH ACCESS LIMITED TO INTERCHANGES.

STATE OF NORTH CAROLINA  
DIVISION OF HIGHWAYS

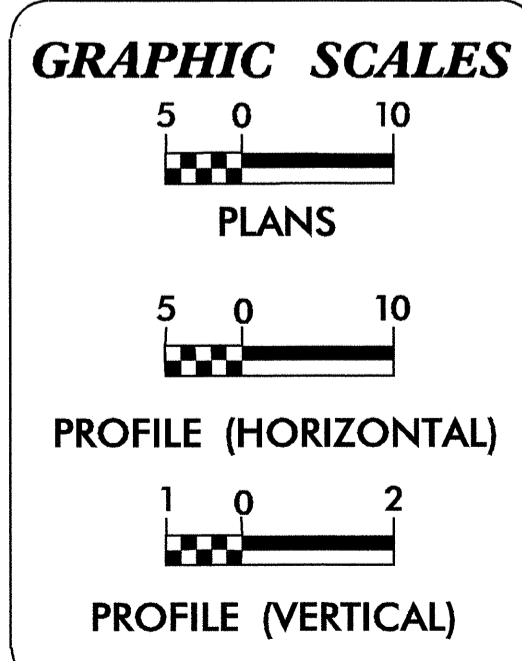
**ROBESON COUNTY**

**LOCATION: US 74 FROM WEST OF SR 1157 (HENRY BERRY ROAD) TO WEST OF SR 1164 (BACK SWAMP ROAD)**

**TYPE OF WORK: GRADING, PAVING, DRAINAGE, STRUCTURES, SIGNING AND GUIDERAIL**

<p>ALL DIMENSIONS IN THESE PLANS ARE IN METERS</p>	STATE PROJECT REFERENCE NO.	SHEET NO.	TOTAL SHEETS
	N.C. R-0513 BB	1	
	STATE PROJ. NO.	F.A. PROJ. NO.	DESCRIPTION
34336.1.2		P.E.	
34336.2.4		R.W. & UTILITIES	
34336.3.4		CONST.	

**TIP PROJECT: R-0513BB PART I**



**DESIGN DATA**

ADT 2004	=	13,540
ADT 2024	=	29,686
DHV	=	10 %
D	=	55 %
T	=	32 % *
V	=	110 km/h
* TTST = 22 %		
* DUAL = 10 %		

**PROJECT LENGTH**

LENGTH ROADWAY TIP PROJECT R-0513BB	=	8.230 km
TOTAL LENGTH TIP PROJECT R-0513BB	=	8.230 km

Prepared In the Office of:

**DIVISION OF HIGHWAYS**  
1000 Birch Ridge Dr., Raleigh, NC 27610

2002 STANDARD SPECIFICATIONS

**RIGHT OF WAY DATE:**  
DECEMBER 20, 2002  
PRODUCTION R/W

**LETTING DATE:**  
OCTOBER 19, 2004

GARY LOVERING, P.E.  
PROJECT ENGINEER

RICHARD A. SHILLINGLAW, P.E.  
PROJECT DESIGN ENGINEER

**HYDRAULICS ENGINEER**

SIGNATURE: *R.C. Henegar* 2-13-04 P.E.

**ROADWAY DESIGN ENGINEER**

SIGNATURE: *Richard A. Shillinglaw* 06-03-04 P.E.

**DIVISION OF HIGHWAYS**  
STATE OF NORTH CAROLINA

*Out McMillan* P.E.  
STATE DESIGN ENGINEER

**DEPARTMENT OF TRANSPORTATION**  
FEDERAL HIGHWAY ADMINISTRATION

APPROVED  
DIVISION ADMINISTRATOR

DATE

03-JUN-2004 09:35  
RSHILLINGLAW R-0513BB-01-01-0187117