
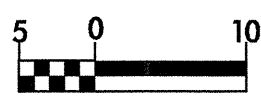
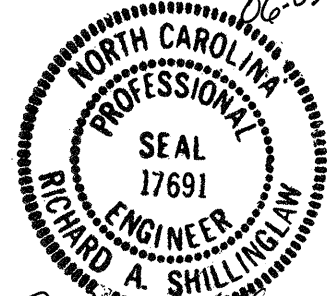
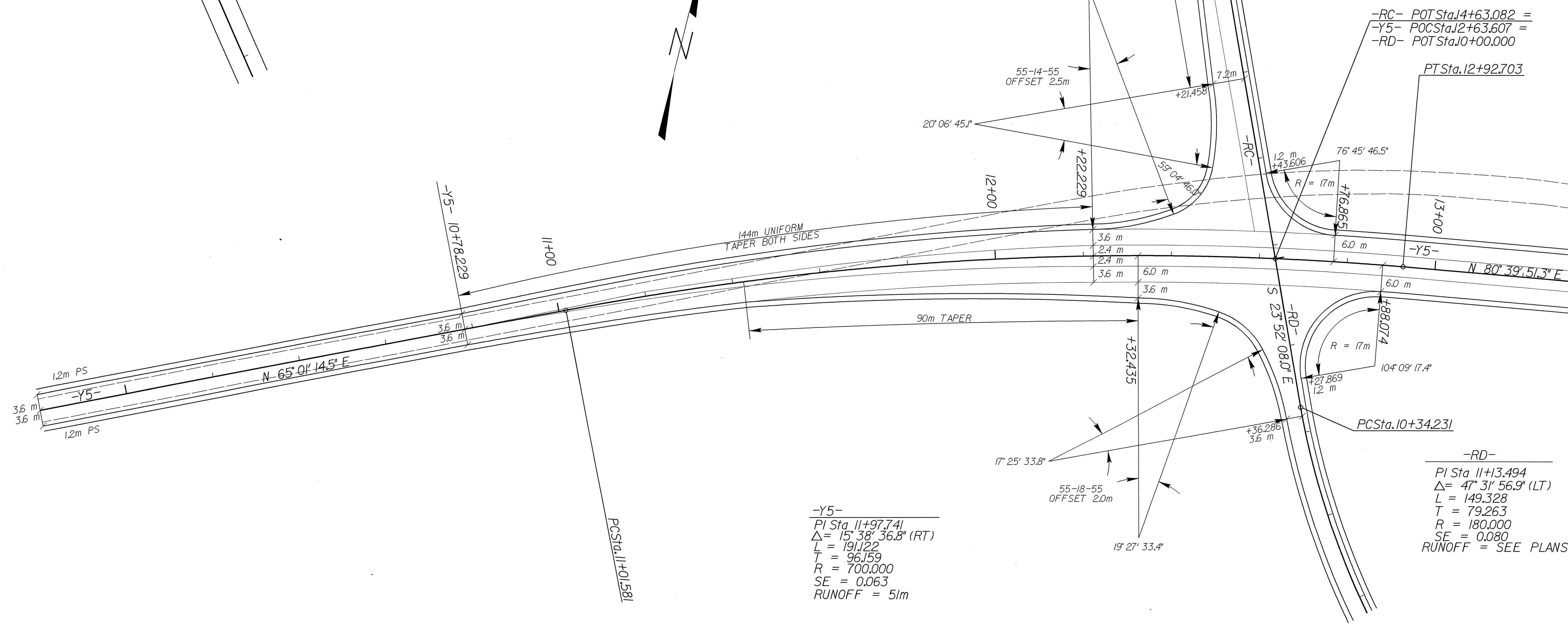
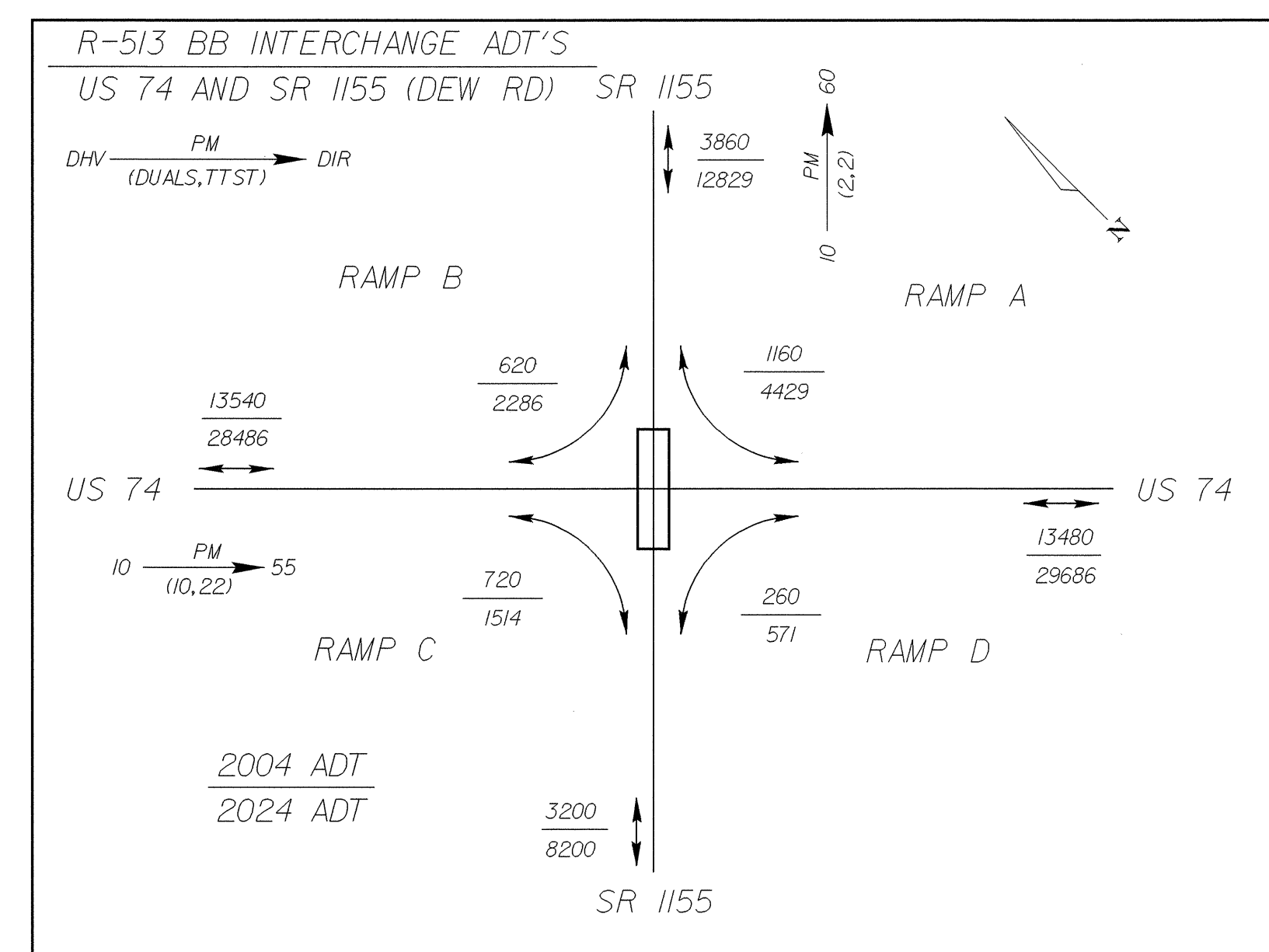
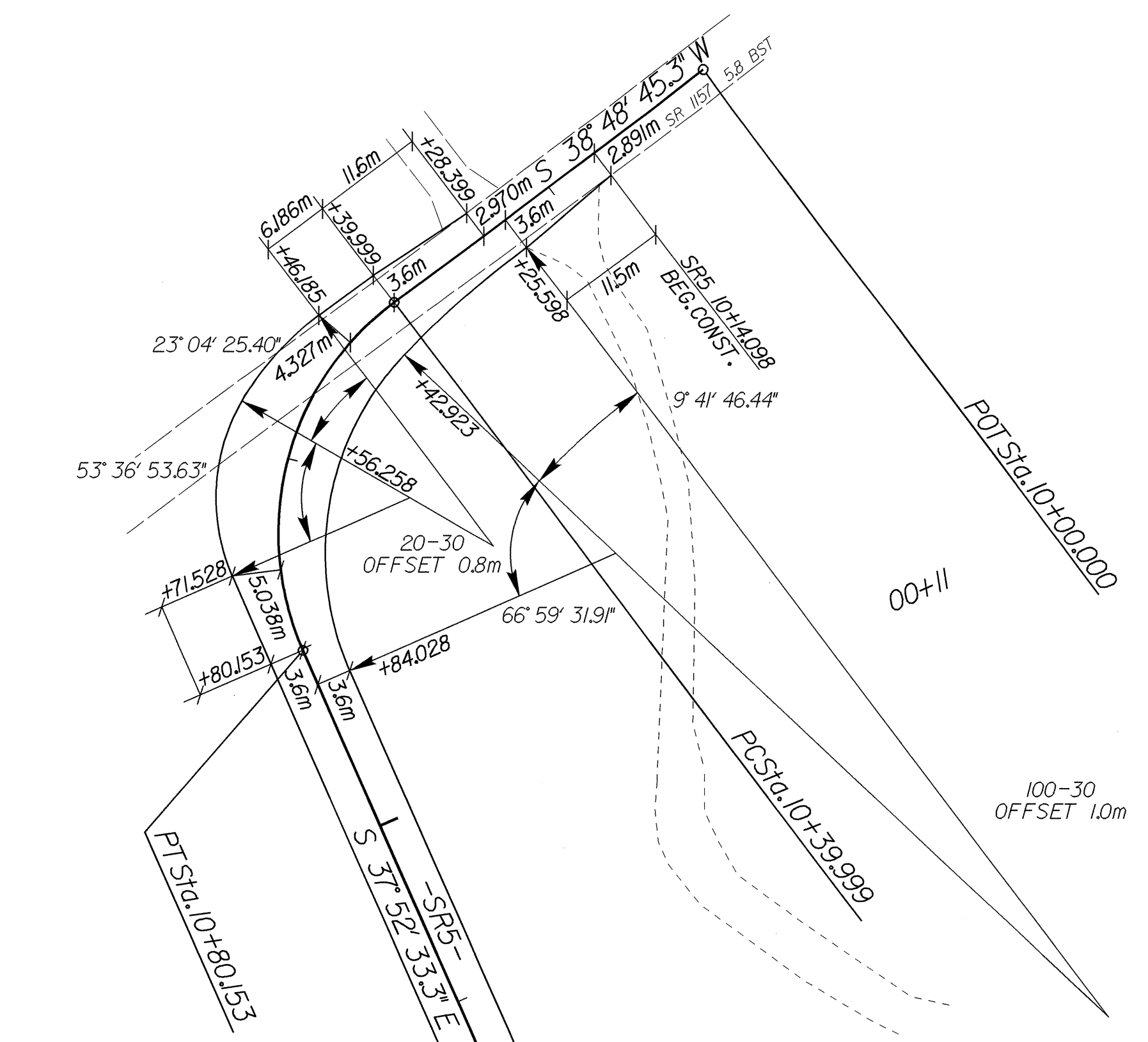


|   |                       |           |
|---|-----------------------|-----------|
| <br> | PROJECT REFERENCE NO. | SHEET NO. |
|   | R-513 BB              | 2-C       |
| ROADWAY DESIGN ENGINEER   |                       |           |
| <br>NORTH CAROLINA PROFESSIONAL ENGINEER SEAL 17691<br>RICHARD A. SHILLING             |                       |           |



-Y5-  
 PI Sta 11+97.741  
 $\Delta = 15^\circ 38' 36.8''$  (RT)  
 $L = 191.122$   
 $T = 96.159$   
 $R = 700.000$   
 $SE = 0.063$   
 RUNOFF = 51m

-RC- POT Sta 14+63.082 =  
 -Y5- PC Sta 12+63.607 =  
 -RD- POT Sta 10+00.000

PT Sta. 12+92.703

-RD-  
 PI Sta 11+3.494  
 $\Delta = 47^\circ 31' 56.9''$  (LT)  
 $L = 149.328$   
 $T = 79.263$   
 $R = 180.000$   
 $SE = 0.080$   
 RUNOFF = SEE PLANS