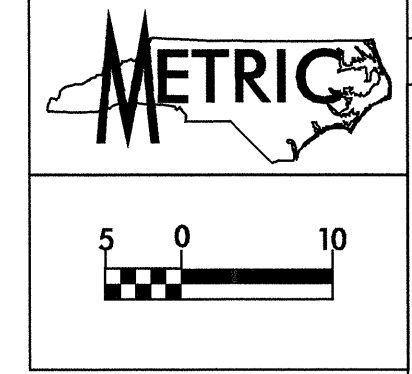
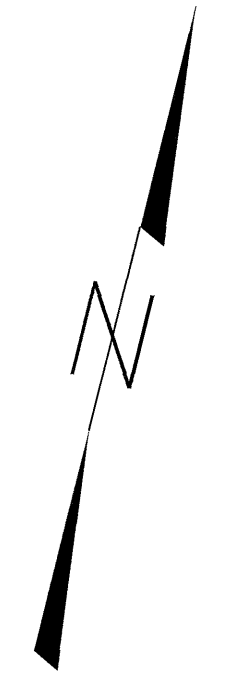
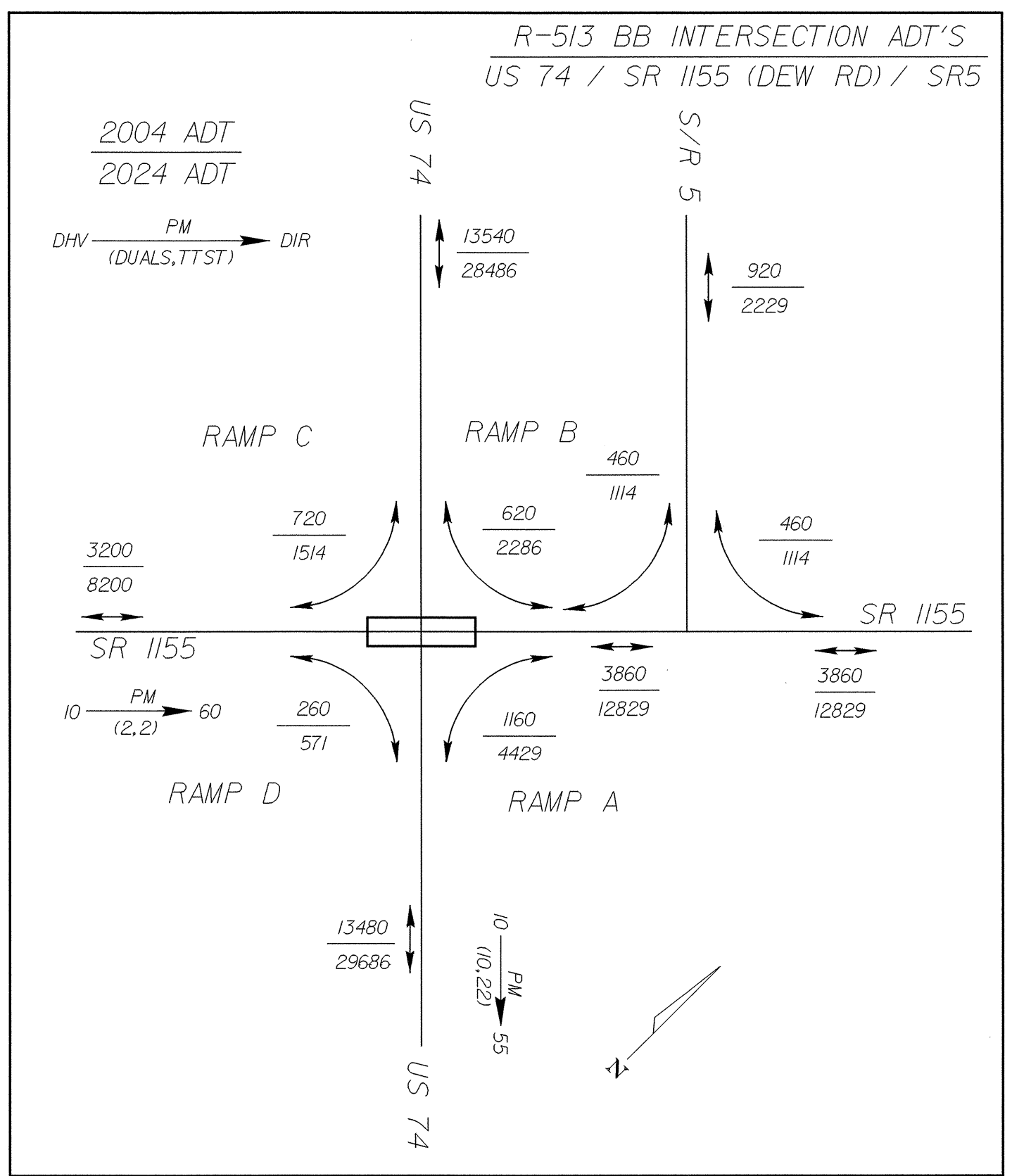
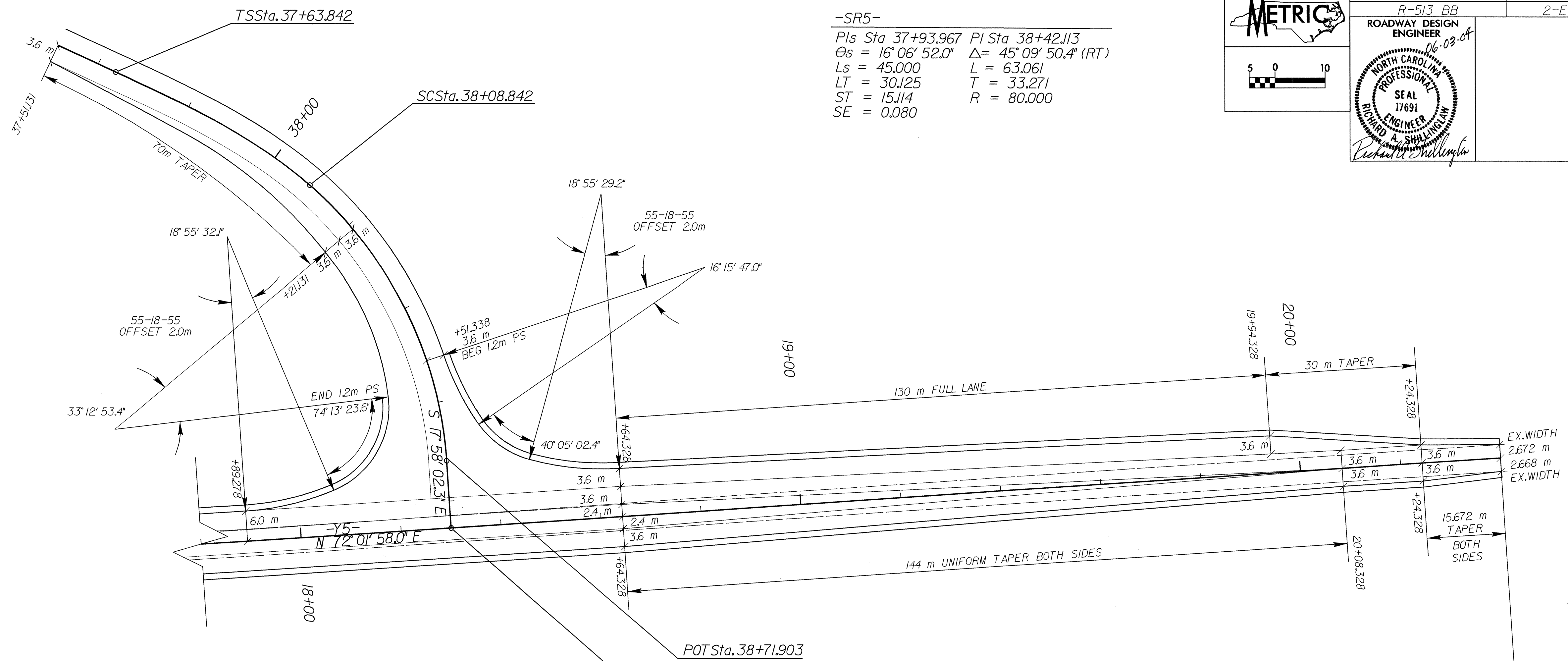


6/16/04



PROJECT REFERENCE NO. R-513 BB	SHEET NO. 2-E
ROADWAY DESIGN ENGINEER 06-03-04	

-SR5-
 PIs Sta 37+93.967 PI Sta 38+42.113
 $\Theta_s = 16^\circ 06' 52.0''$ $\Delta = 45^\circ 09' 50.4''$ (RT)
 $L_s = 45.000$ $L = 63.061$
 $LT = 30.125$ $T = 33.271$
 $ST = 15.114$ $R = 80.000$
 $SE = 0.080$



03-JUN-2004 11:40
R:\Projects\03-0001\03-0001.dwg
R:\Projects\03-0001\03-0001.plt