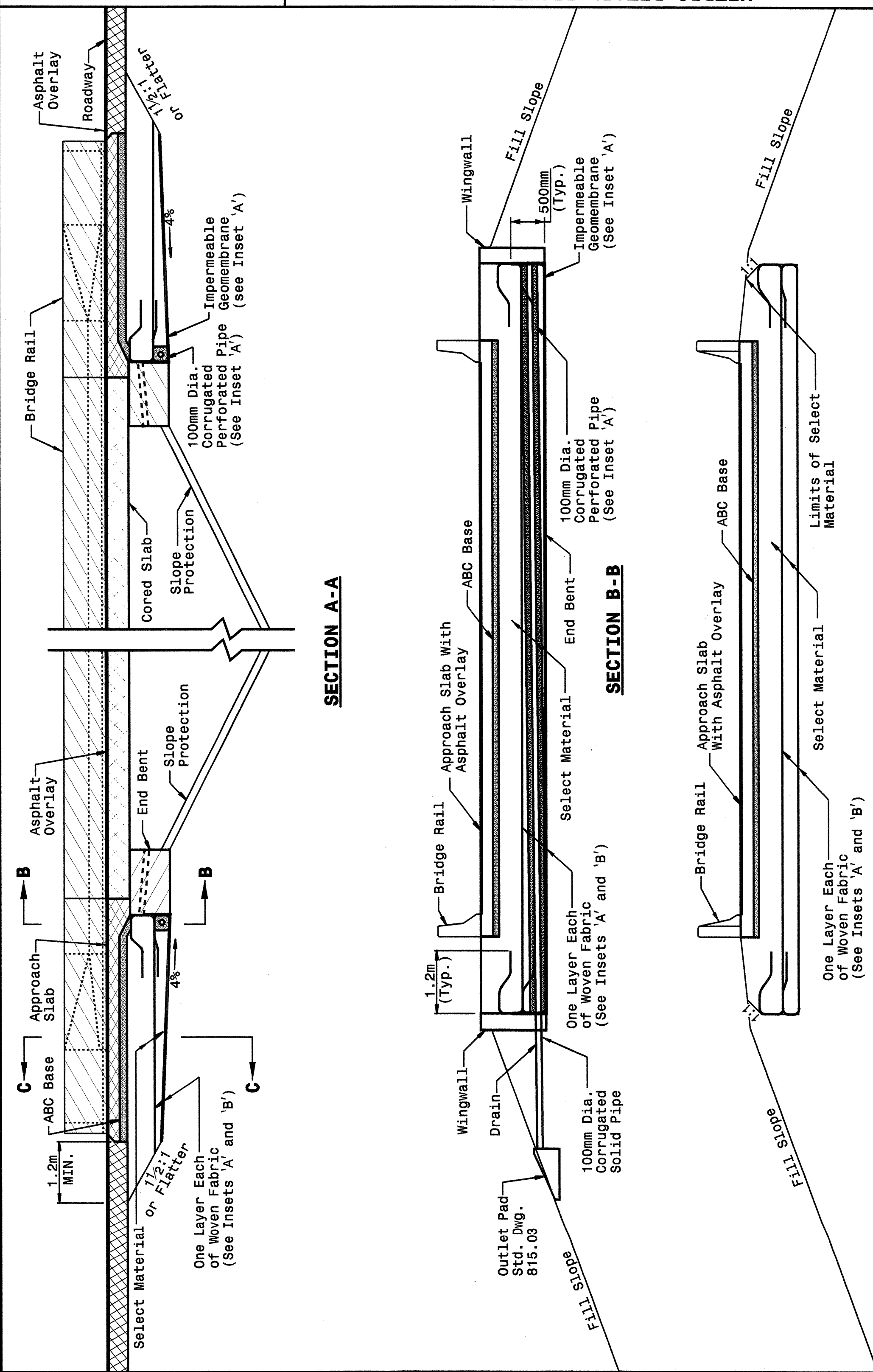




STATE OF NORTH CAROLINA DEPT. OF TRANSPORTATION DIVISION OF HIGHWAYS RALEIGH, N.C.

METRIC DETAIL DRAWING FOR REINFORCED BRIDGE APPROACH FILLS CORED SLAB BRIDGES

SHEET 3 OF 4 422D10



STATE OF NORTH CAROLINA DEPT. OF TRANSPORTATION DIVISION OF HIGHWAYS RALEIGH, N.C.

METRIC DETAIL DRAWING FOR REINFORCED BRIDGE APPROACH FILLS CORED SLAB BRIDGES

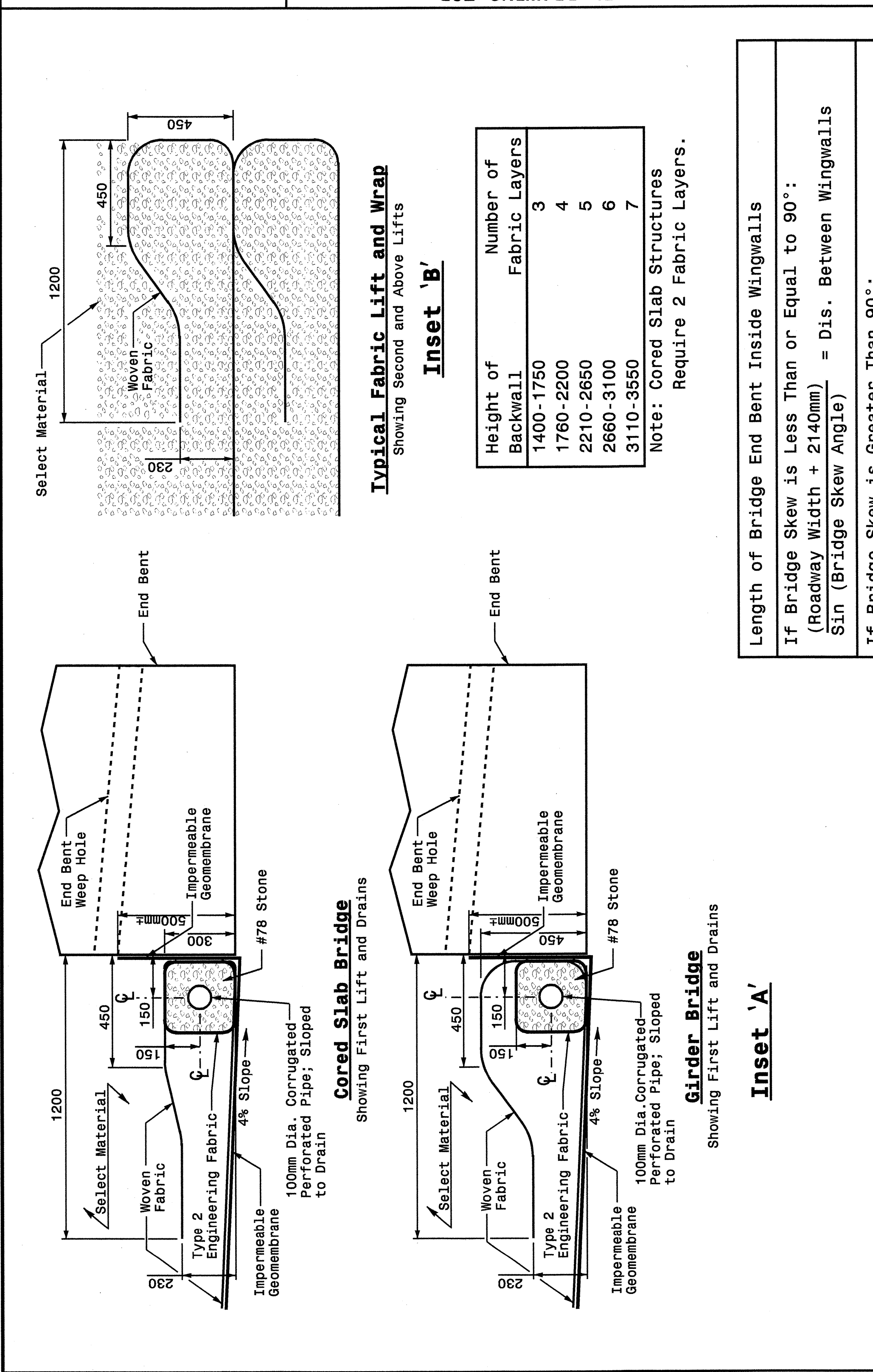
SHEET 3 OF 4 422D10

Note: This drawing is dimensioned in millimeters unless otherwise depicted within the drawing.

STATE OF NORTH CAROLINA DEPT. OF TRANSPORTATION DIVISION OF HIGHWAYS RALEIGH, N.C.

METRIC DETAIL DRAWING FOR REINFORCED BRIDGE APPROACH FILLS INSETS AND CHARTS

SHEET 4 OF 4 422D10



STATE OF NORTH CAROLINA DEPT. OF TRANSPORTATION DIVISION OF HIGHWAYS RALEIGH, N.C.

METRIC DETAIL DRAWING FOR REINFORCED BRIDGE APPROACH FILLS INSETS AND CHARTS

SHEET 4 OF 4 422D10

Note: This drawing is dimensioned in millimeters unless otherwise depicted within the drawing.

Height of Backwall	Number of Fabric Layers
1400-1750	3
1760-2200	4
2210-2650	5
2660-3100	6
3110-3550	7

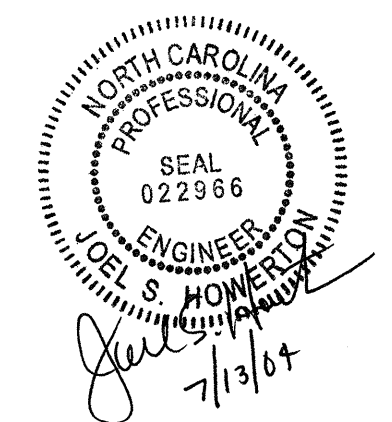
Note: Cored Slab Structures Require 2 Fabric Layers.

Length of Bridge End Bent Inside Wingwalls  
 If Bridge Skew is Less Than or Equal to 90°:  
 $(\text{Roadway Width} + 2140\text{mm}) \sin(\text{Bridge Skew Angle}) = \text{Dis. Between Wingwalls}$   
 If Bridge Skew is Greater Than 90°:  
 $(\text{Roadway Width} + 2140\text{mm}) \cos(\text{Bridge Skew Angle} - 90^\circ) = \text{Dis. Between Wingwalls}$

DESIGN SERVICES UNIT STANDARDS AND SPECIAL DESIGN Office 919-250-4128 FAX 919-250-4119

SEE PLATE FOR TITLE

ORIGINAL BY: 2002 STANDARDS DATE: 01-15-02  
 MODIFIED BY: E.E. WARD DATE: 04-07-04  
 CHECKED BY: C.B. WARD DATE: 4-12-04  
 FILE SPEC.: stds/02stdstdetails/metric/422d10.dgn



08-APR-2004 09:27 W:\Special Details\arcward\stds\02\stds to Special Details\metric\422d10\0422d10m.dgn