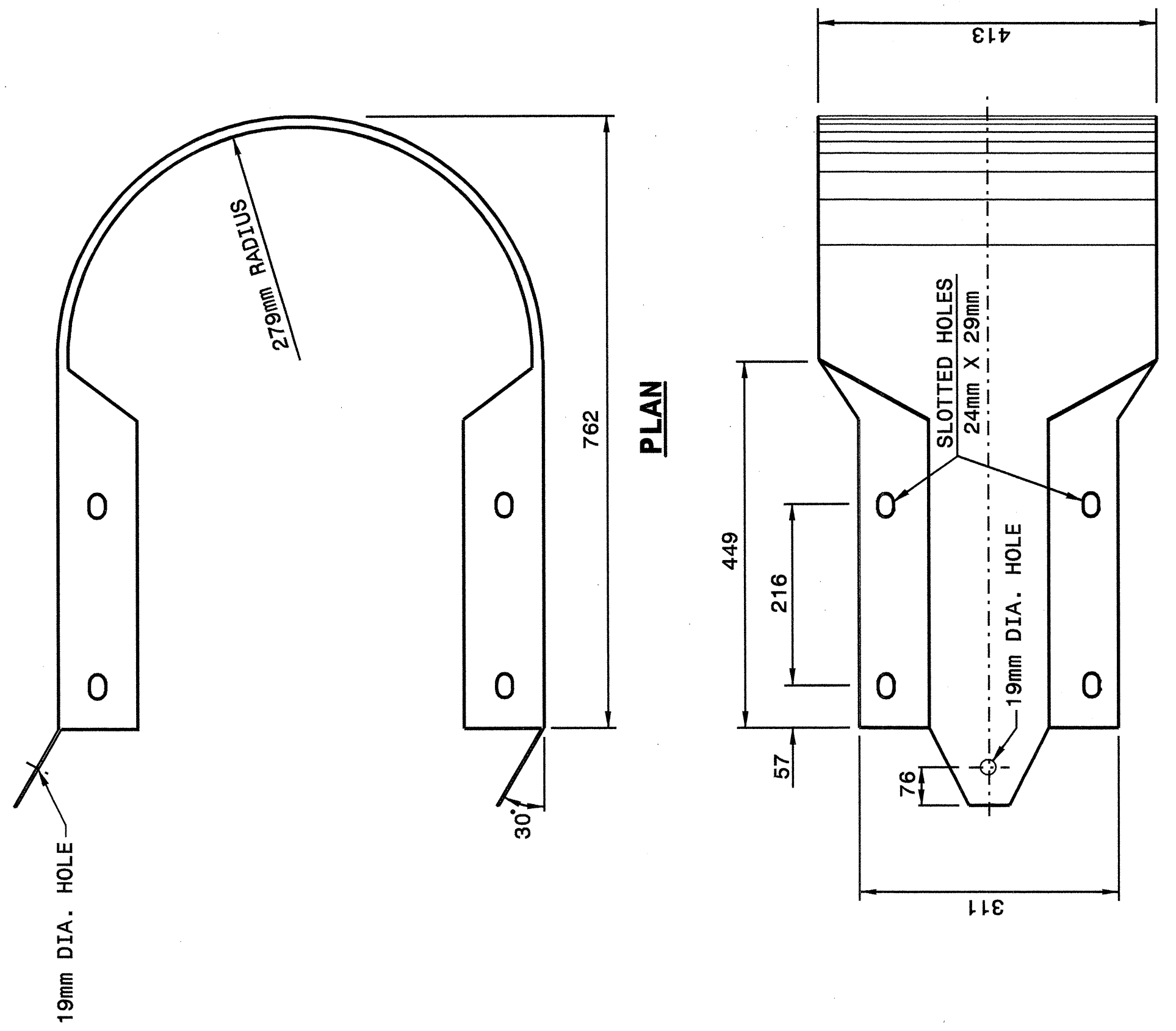




STATE OF NORTH CAROLINA DEPT. OF TRANSPORTATION DIVISION OF HIGHWAYS RALEIGH, N.C.

METRIC DETAIL DRAWING FOR GUARDRAIL INSTALLATION

SHEET 7 OF 7  
**862D02**



**ELEVATION**  
**BUFFERED END SECTION**

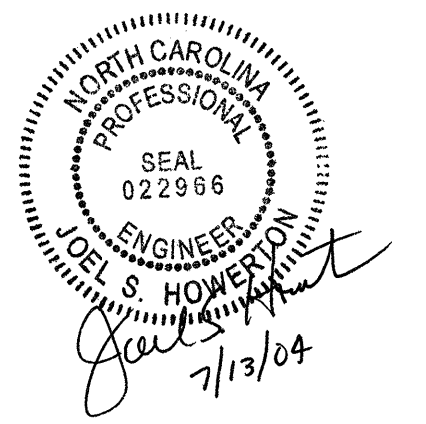
Note: drawing is dimensioned in millimeters unless otherwise depicted within the drawing.

STATE OF NORTH CAROLINA DEPT. OF TRANSPORTATION DIVISION OF HIGHWAYS RALEIGH, N.C.

METRIC DETAIL DRAWING FOR GUARDRAIL INSTALLATION

SHEET 7 OF 7  
**862D02**

20-MAY-2003 07:54 W:\Special\_Designs\ernward\stds\02 Stds to Special\_Details\metric\86202\0862d02m.dgn .spell -R DST 9510



**DESIGN SERVICES UNIT  
STANDARDS AND SPECIAL DESIGN**  
Office 919-250-4128 FAX 919-250-4119

**SEE PLATE FOR TITLE**

ORIGINAL BY: 2002 STD.862.02 DATE: \_\_\_\_\_  
 MODIFIED BY: E.E. WARD DATE: 02-09-03  
 CHECKED BY: *[Signature]* DATE: 5-03  
 FILE SPEC.: /usr/stds/02code/011/metric/86202/862d02m.dgn