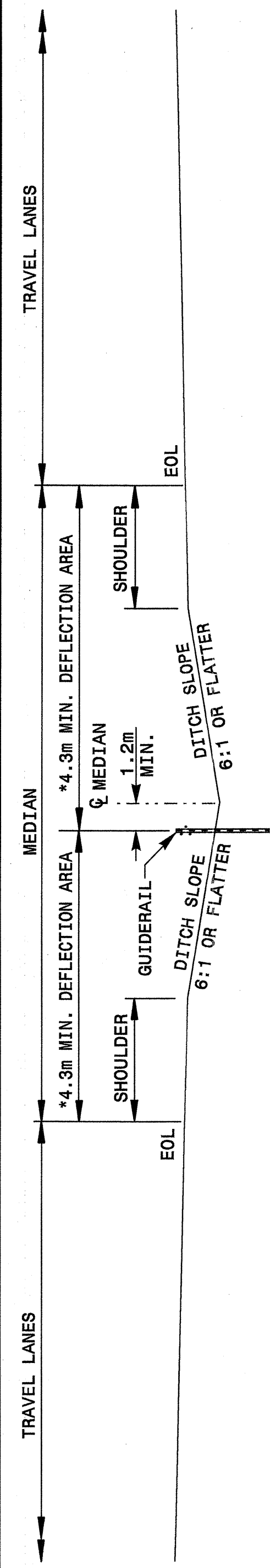




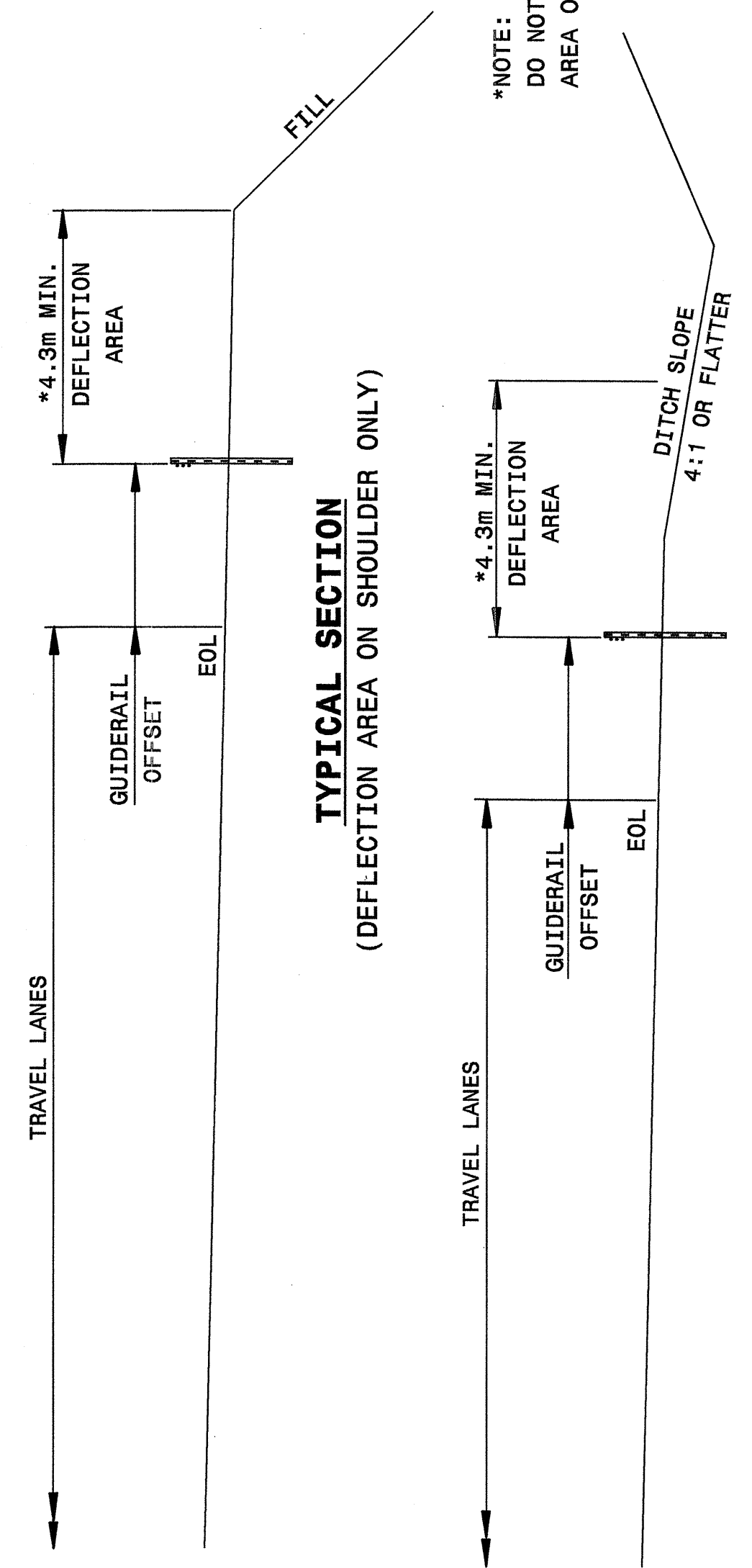
STATE OF
NORTH CAROLINA
DEPT. OF TRANSPORTATION
DIVISION OF HIGHWAYS
RALEIGH, N.C.

METRIC DETAIL DRAWING FOR
CABLE GUIDERAIL
DESIGN AND PLACEMENT

SHEET 3 OF 11
865D01



TYPICAL SECTION
(DEFLECTION AREA ON MEDIAN SLOPES)
DOUBLE FACE GUIDERAIL APPLICATION



TYPICAL SECTION
(DEFLECTION AREA ON SHOULDER AND DITCH SLOPE)
SINGLE FACE GUIDERAIL APPLICATION

*NOTE:
DO NOT USE CLEAR DEFLECTION
AREA ON BRIDGES.

Note:
This drawing is dimensioned in
millimeters unless otherwise
depicted within the drawing.

STATE OF
NORTH CAROLINA
DEPT. OF TRANSPORTATION
DIVISION OF HIGHWAYS
RALEIGH, N.C.

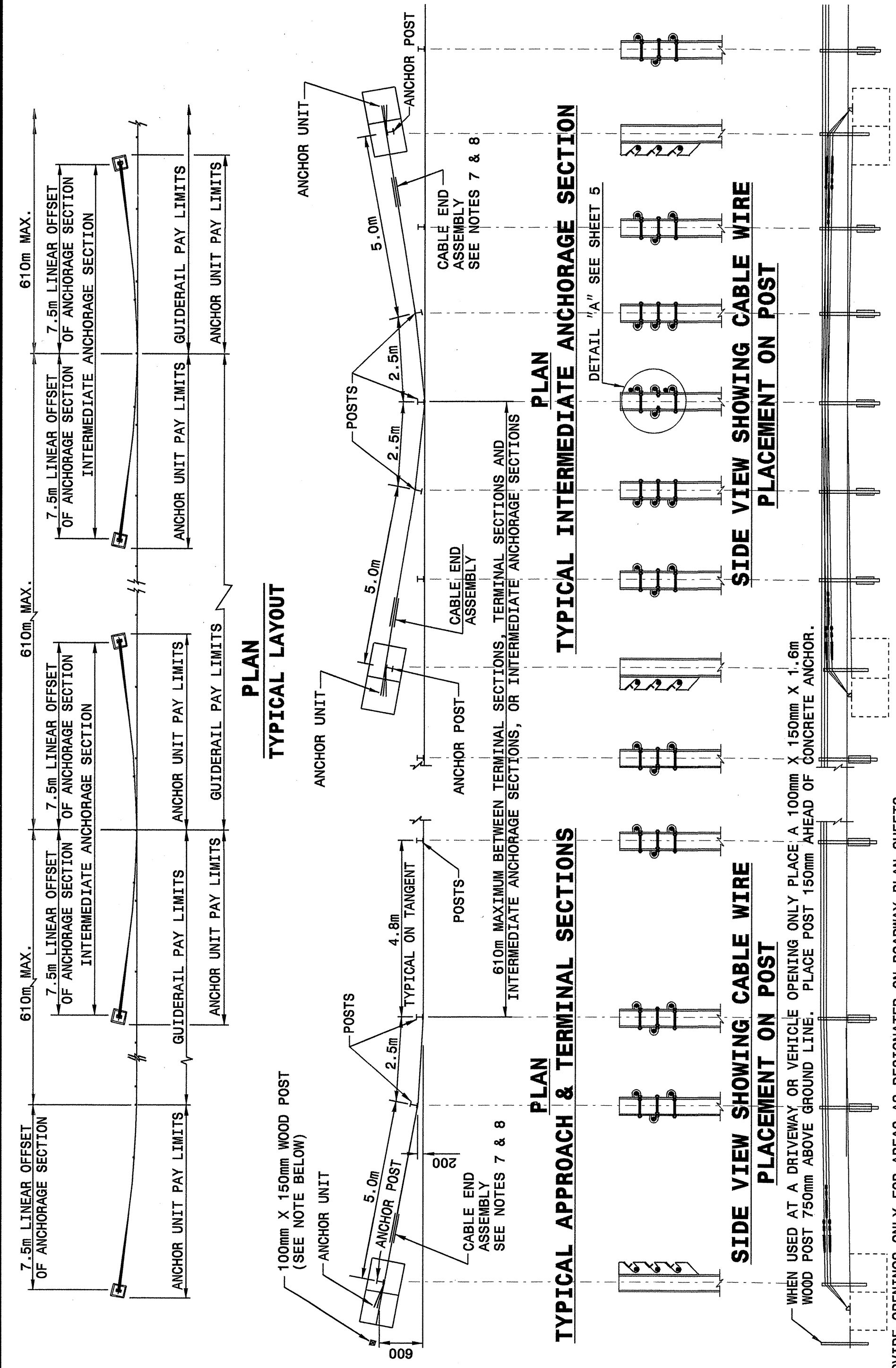
METRIC DETAIL DRAWING FOR
CABLE GUIDERAIL
DESIGN AND PLACEMENT

SHEET 3 OF 11
865D01

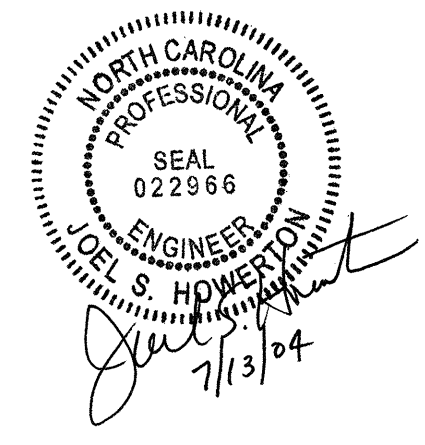
STATE OF
NORTH CAROLINA
DEPT. OF TRANSPORTATION
DIVISION OF HIGHWAYS
RALEIGH, N.C.

METRIC DETAIL DRAWING FOR
CABLE GUIDERAIL
GUIDERAIL LAYOUT

SHEET 4 OF 11
865D01



*PROVIDE OPENINGS ONLY FOR AREAS AS DESIGNATED ON ROADWAY PLAN SHEETS.
ELEVATION
Note: **TYPICAL APPROACH & TERMINAL SECTIONS**
This drawing is dimensioned in
millimeters unless otherwise
depicted within the drawing.



DESIGN SERVICES UNIT
STANDARDS AND SPECIAL DESIGN
Office 919-250-4128 FAX 919-250-4119

SEE PLATE FOR TITLE

ORIGINAL BY: 2002 STANDARDS DATE: 1-15-02
MODIFIED BY: E.E. WARD DATE: 6-17-02
CHECKED BY: [Signature] DATE: 6-02
FILE SPEC.: /usr/std/02stds to details/metric/86501/0865d01.dgn