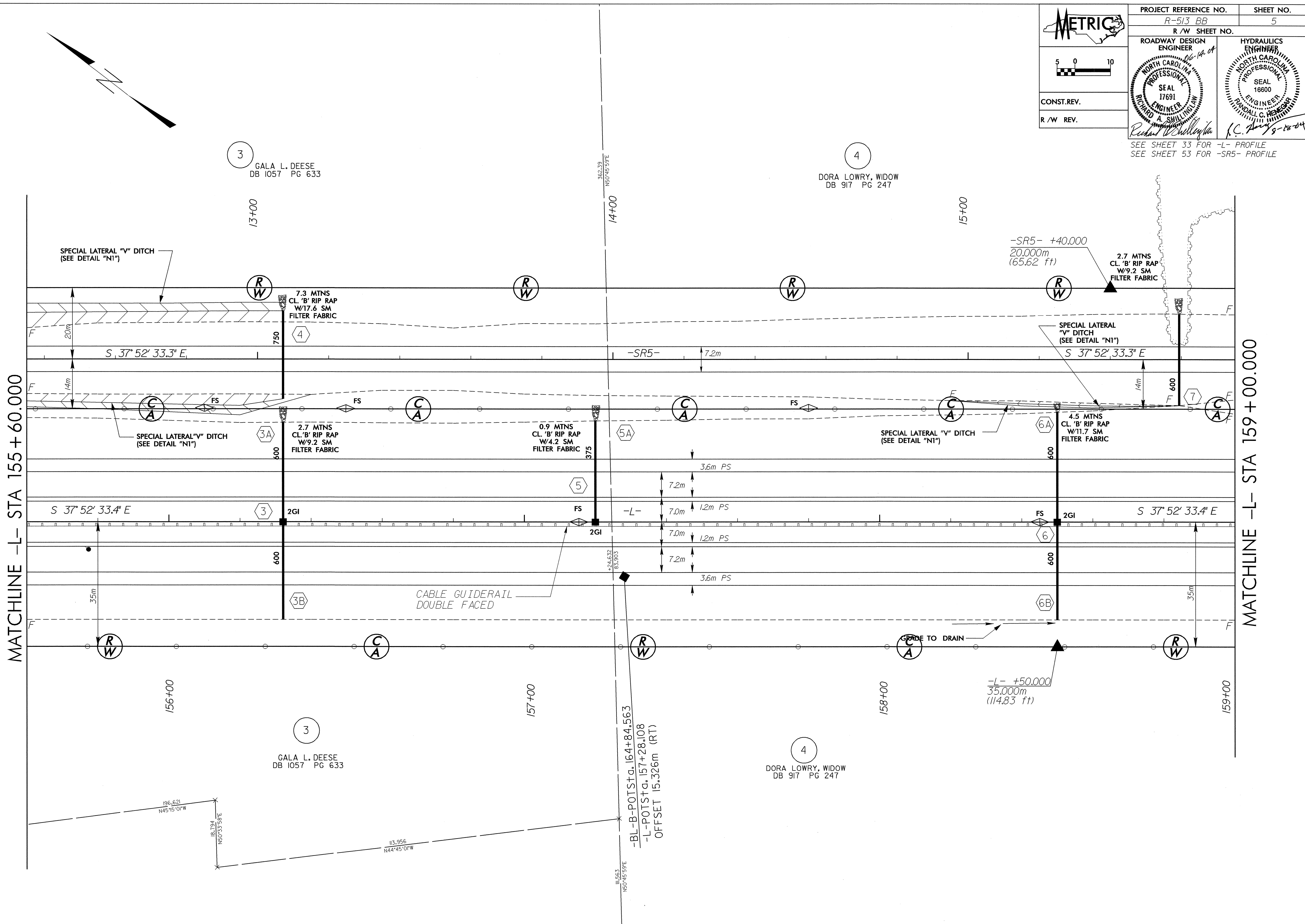


5 0 10

CONST. REV.  
R/W REV.

PROJECT REFERENCE NO. R-513 BB	SHEET NO. 5
R/W SHEET NO.	
ROADWAY DESIGN ENGINEER NORTH CAROLINA PROFESSIONAL ENGINEER SEAL 17691 RICHARD A. SHILL	HYDRAULICS ENGINEER NORTH CAROLINA PROFESSIONAL ENGINEER SEAL 16600 RANDALL C. HENNING

SEE SHEET 33 FOR -L- PROFILE  
SEE SHEET 53 FOR -SR5- PROFILE



8/17/95

14-JUN-2004 07:57  
FLS: JAV: 15:46:00  
L: SHEL1 AT RD203844