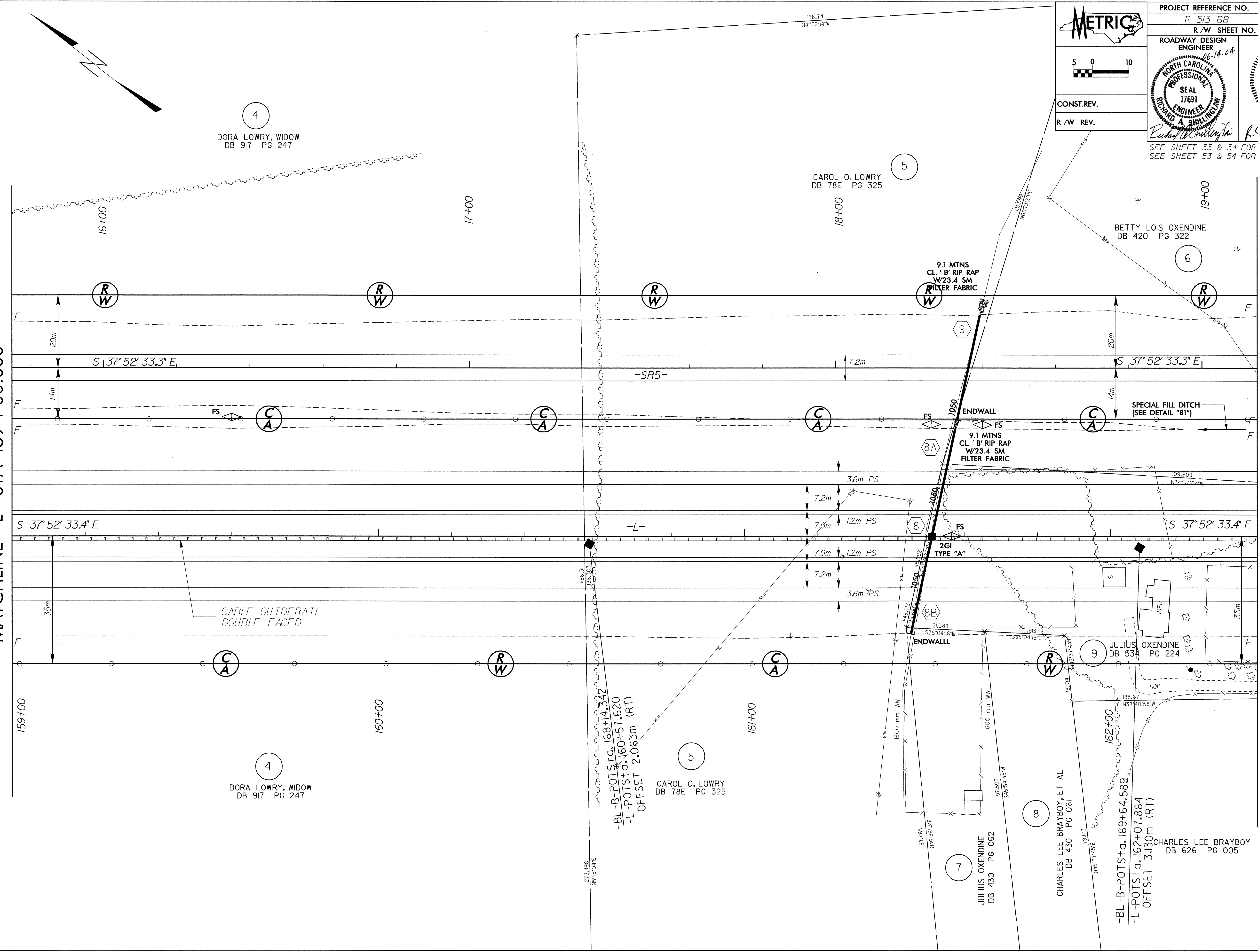


8/17/95
14-JUN-2004 07:57
FLS:ASH AT 140263824

MATCHLINE -L- STA 159+00.000

MATCHLINE -L- STA 162+40.000



METRIC

5 0 10

CONST. REV.

R/W REV.

PROJECT REFERENCE NO. R-513 BB	SHEET NO. 6
R/W SHEET NO.	
ROADWAY DESIGN ENGINEER 16-14-04 NORTH CAROLINA PROFESSIONAL SEAL 17691 RICHARD A. SHULL ENGINEER	HYDRAULICS ENGINEER 16-14-04 NORTH CAROLINA PROFESSIONAL SEAL 16600 RANDALL C. HENNINGER ENGINEER

SEE SHEET 33 & 34 FOR -L- PROFILE
SEE SHEET 53 & 54 FOR -SR5- PROFILE

4
DORA LOWRY, WIDOW
DB 917 PG 247

5
CAROL O. LOWRY
DB 78E PG 325

6
BETTY LOIS OXENDINE
DB 420 PG 322

4
DORA LOWRY, WIDOW
DB 917 PG 247

5
CAROL O. LOWRY
DB 78E PG 325

7
JULIUS OXENDINE
DB 430 PG 062

8
CHARLES LEE BRAYBOY, ET AL
DB 430 PG 061

9
JULIUS OXENDINE
DB 534 PG 224

CHARLES LEE BRAYBOY
DB 626 PG 005

-BL-B-POTStd. 168+14.342
-L-POTStd. 160+57.620
OFFSET 2.063m (RT)

-BL-B-POTStd. 169+64.589
-L-POTStd. 162+07.864
OFFSET 3.130m (RT)