

METRIC

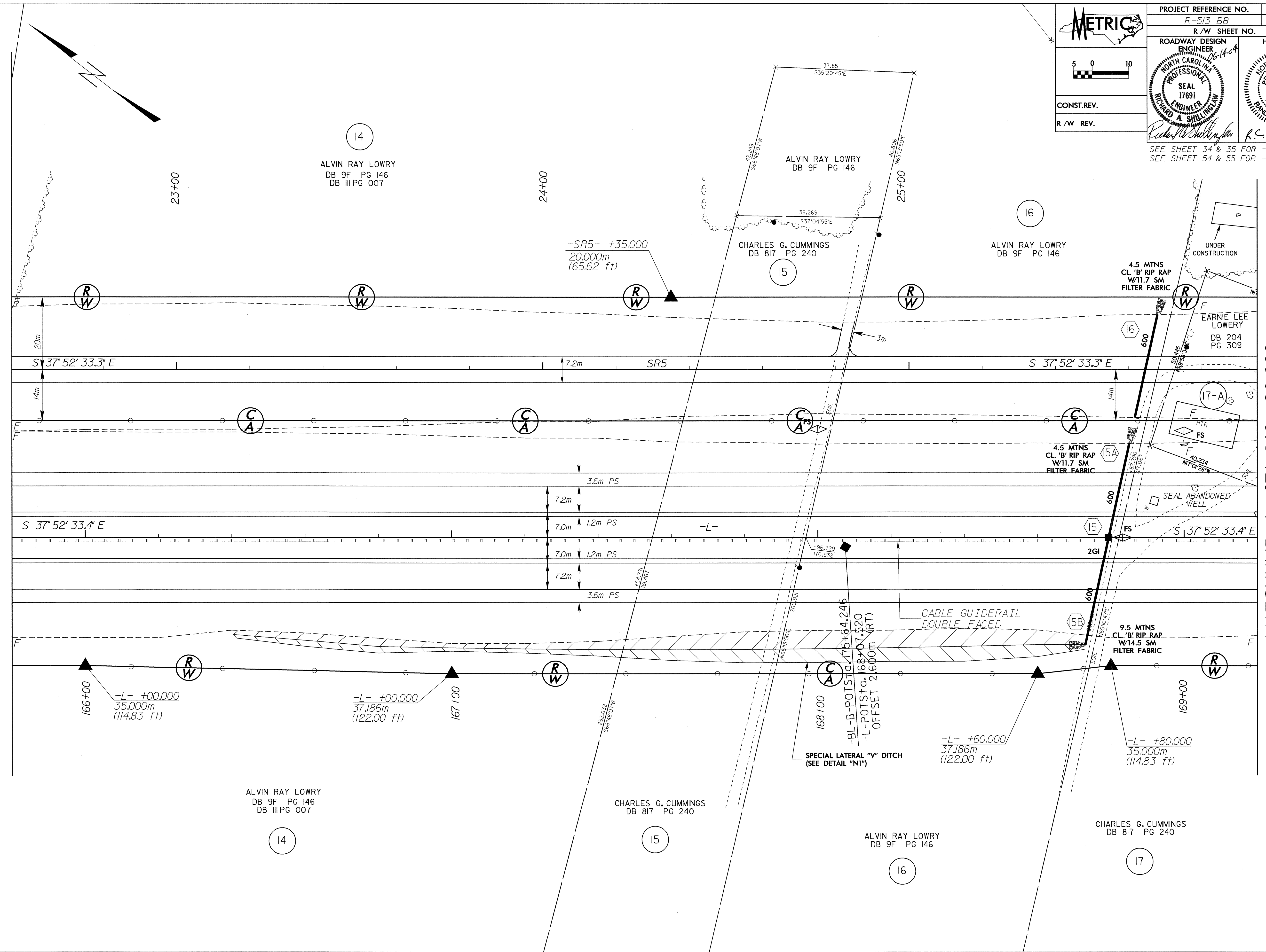
CONST. REV.
R/W REV.

PROJECT REFERENCE NO. R-513 BB	SHEET NO. 8
R/W SHEET NO.	
ROADWAY DESIGN ENGINEER SEAL 17691 RICHARD A. SHILLING	HYDRAULICS ENGINEER SEAL 16600 DANALL G. HEMER

SEE SHEET 34 & 35 FOR -L- PROFILE
SEE SHEET 54 & 55 FOR -SR5- PROFILE

MATCHLINE -L- STA 165 + 80.000

MATCHLINE -L- STA 169 + 20.000



01

01

8/17/93

14-JUN-2004 07:57
FL:SP01 AT:R0288824