

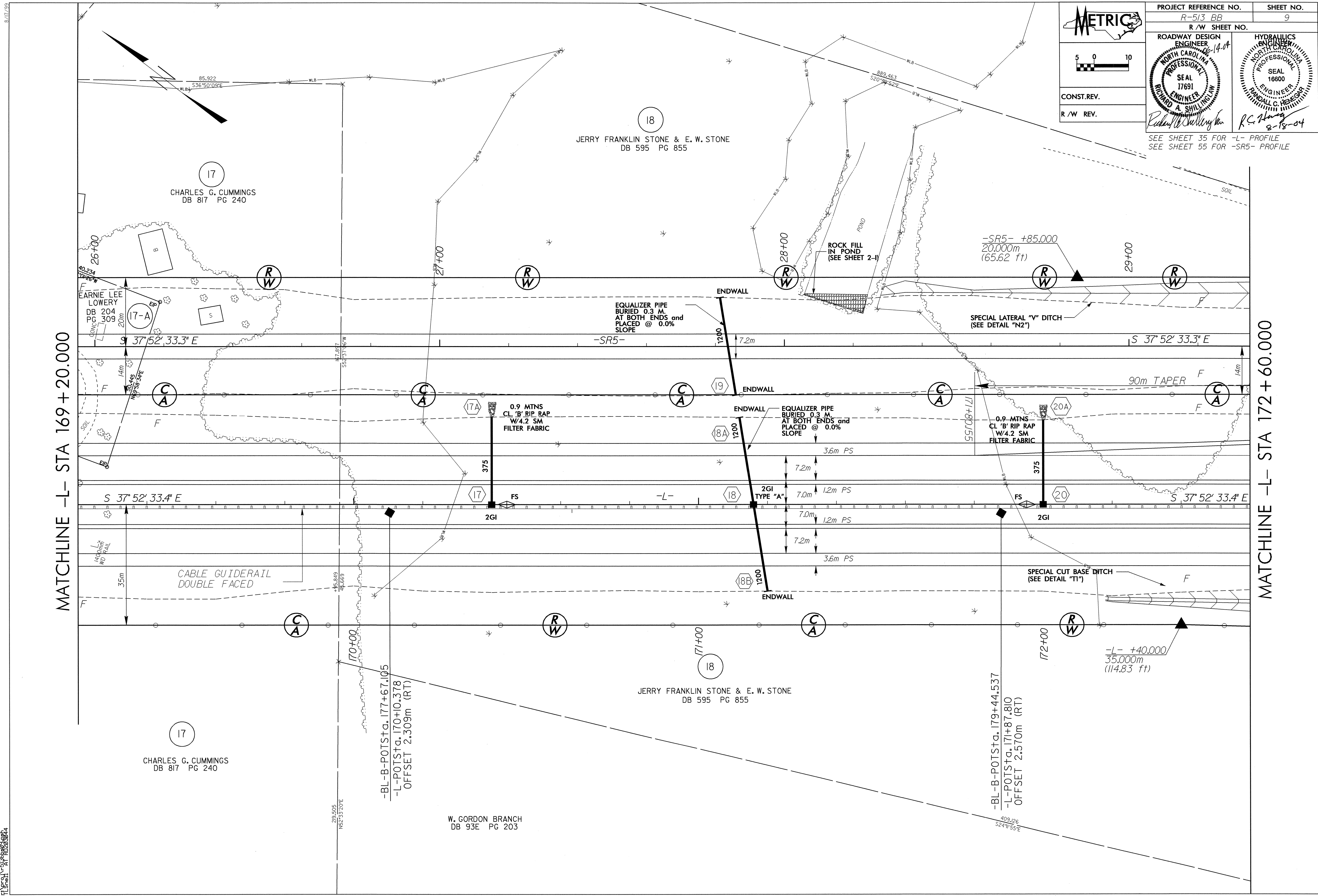
METRIC

CONST.REV.
R/W REV.

PROJECT REFERENCE NO. R-513 BB	SHEET NO. 9
R/W SHEET NO.	
ROADWAY DESIGN ENGINEER NORTH CAROLINA PROFESSIONAL SEAL 17691 RICHARD A. SHILLING	HYDRAULICS ENGINEER NORTH CAROLINA PROFESSIONAL SEAL 16600 RICHARD C. HENGER
SEE SHEET 35 FOR -L- PROFILE SEE SHEET 55 FOR -SR5- PROFILE	

MATCHLINE -L- STA 169+20.000

MATCHLINE -L- STA 172+60.000



14 JUN 2004 07:58
FLS:AV:51:56:52:8824
AT: RUC:8824