

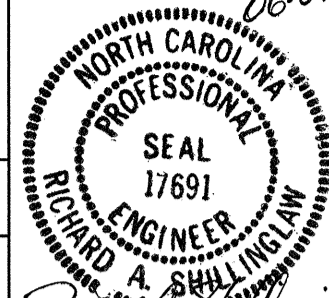
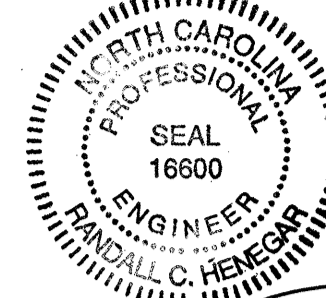


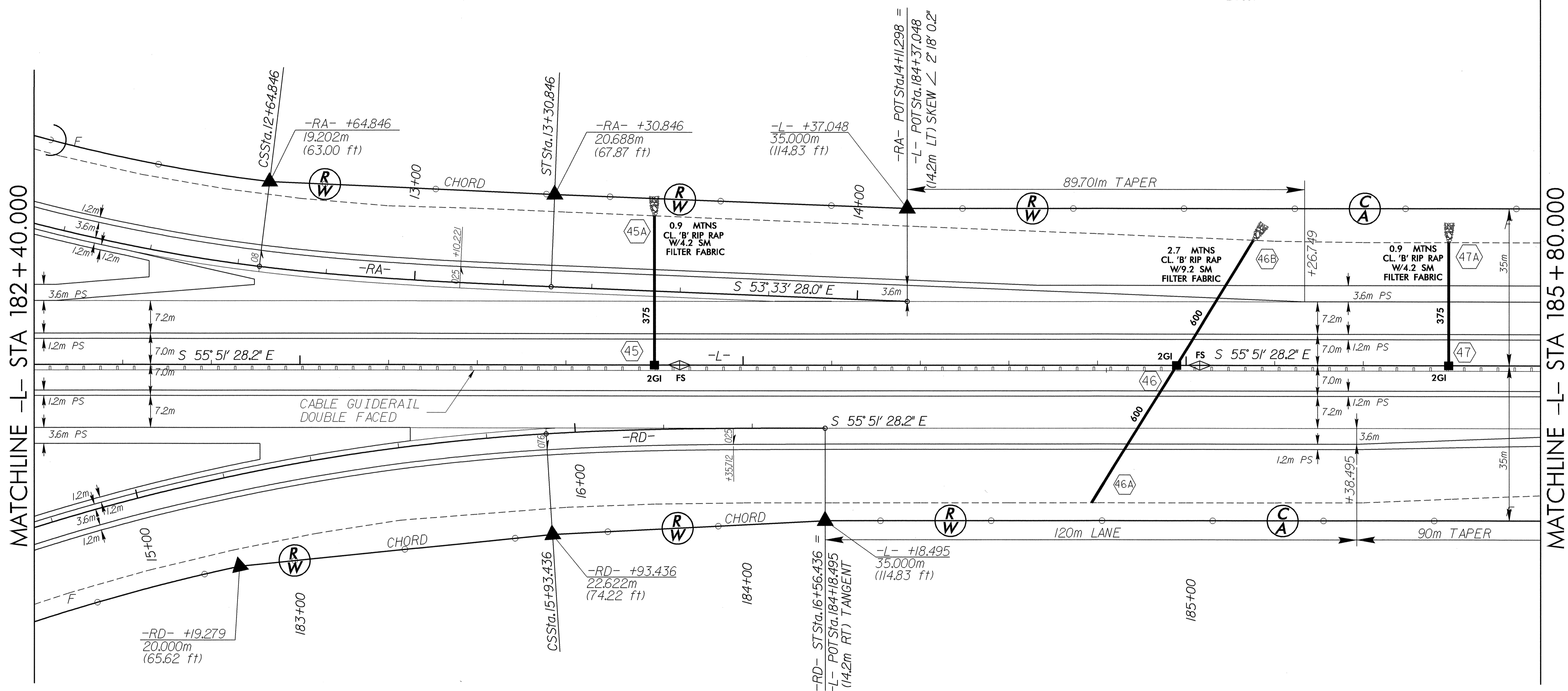
8/17/99

-RA-  
 PI Sta 11+51.759    Pls Sta 12+86.860  
 $\Delta = 33^\circ 22' 25.8" (LT)$      $\Theta_s = 4^\circ 43' 36.8"$   
 $L = 232.993$      $L_s = 66.000$   
 $T = 119.906$      $LT = 44.016$   
 $R = 400.000$      $ST = 22.014$   
 $SE = 0.080$

23  
 HELEN PATE  
 DB 661 PG 323

  CONST.REV. R/W REV.	PROJECT REFERENCE NO. R-513 BB	SHEET NO. 12
	ROADWAY DESIGN ENGINEER 06-04-04 	HYDRAULICS ENGINEER 

SEE SHEET 37 FOR -L- PROFILE  
 SEE SHEET 49 FOR -RA- PROFILE  
 SEE SHEET 52 FOR -RD- PROFILE  
 SEE SHEET 2-6 FOR SHEAR POINT LAYOUT



-RD-  
 PI Sta 15+20.156    Pls Sta 16+4.444  
 $\Delta = 16^\circ 55' 07.0" (RT)$      $\Theta_s = 3^\circ 36' 34.7"$   
 $L = 147.643$      $L_s = 63.000$   
 $T = 74.362$      $LT = 42.009$   
 $R = 500.000$      $ST = 21.008$   
 $SE = 0.076$

HELEN PATE  
 DB 661 PG 323

23-FEB-2004 15:34  
 C:\pwork\182-185\182-185.dwg