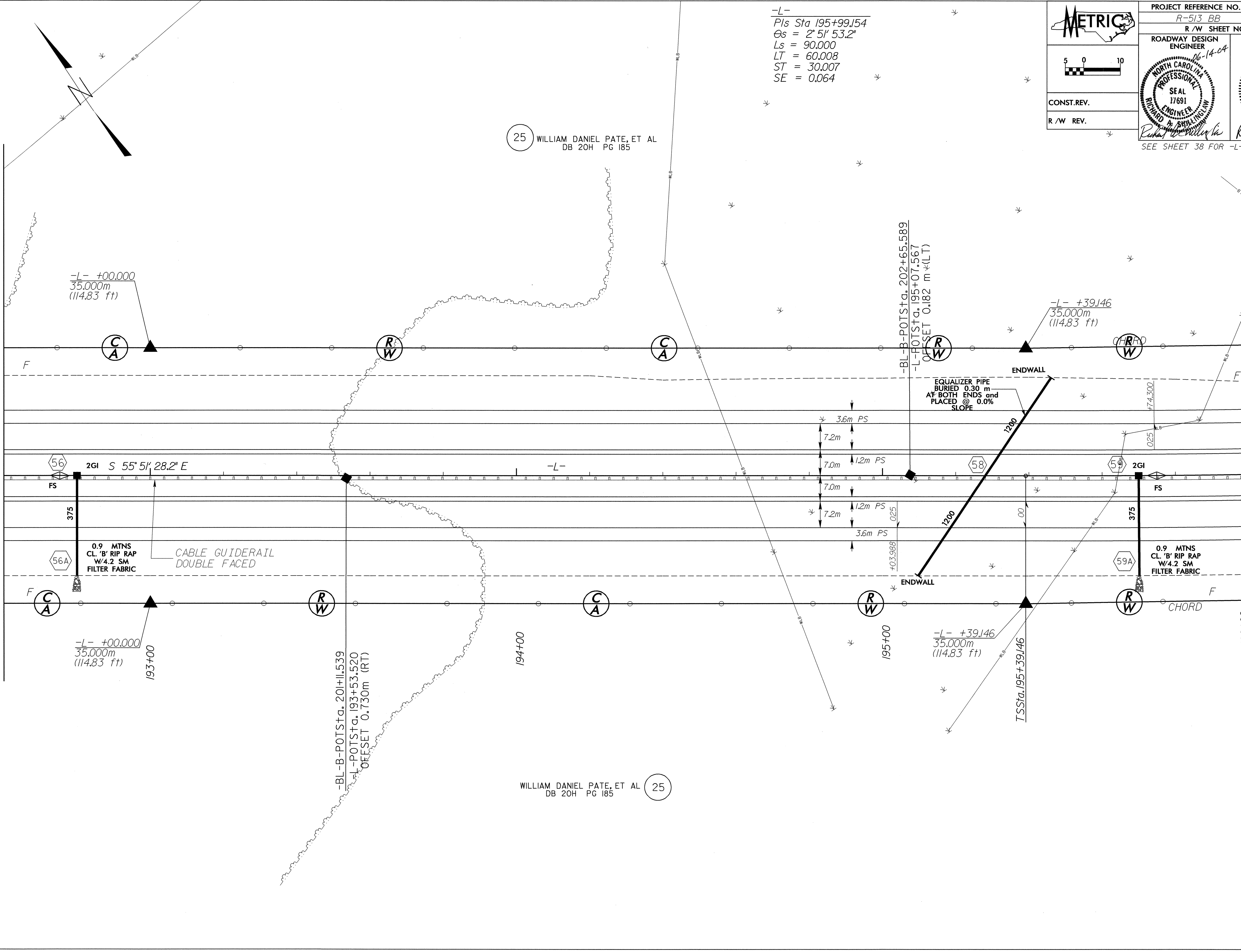


5/17/04

14-JUN-2004 08:00
PLS Rev. 1
PLS Rev. 1
AT 1822824

MATCHLINE -L- STA 192+60.000

MATCHLINE -L- STA 196+00.000



-L-
 Pls Sta 195+99.154
 $\Theta_s = 2^\circ 51' 53.2''$
 $L_s = 90.000$
 $LT = 60.008$
 $ST = 30.007$
 $SE = 0.064$

25 WILLIAM DANIEL PATE, ET AL
 DB 20H PG 185

WILLIAM DANIEL PATE, ET AL 25
 DB 20H PG 185

 5 0 10 CONST. REV. R/W REV.	PROJECT REFERENCE NO. R-513 BB	SHEET NO. 15
	R/W SHEET NO.	
ROADWAY DESIGN ENGINEER 06-14-04 	HYDRAULICS ENGINEER 	
SEE SHEET 38 FOR -L- PROFILE		

-L- +00.000
 35.000m
 (114.83 ft)

-L- +00.000
 35.000m
 (114.83 ft)

-L- +39.146
 35.000m
 (114.83 ft)

-L- +39.146
 35.000m
 (114.83 ft)

2GI S 55° 51' 28.2" E

0.9 MTNS
 CL. 'B' RIP RAP
 W/4.2 SM
 FILTER FABRIC

CABLE GUIDERAIL
 DOUBLE FACED

EQUALIZER PIPE
 BURIED 0.30 m
 AT BOTH ENDS and
 PLACED @ 0.0%
 SLOPE

0.9 MTNS
 CL. 'B' RIP RAP
 W/4.2 SM
 FILTER FABRIC

-BL-B-POTSta. 201+11.539
 -L-POTSta. 193+53.520
 OFFSET 0.730m (RT)

-BL-B-POTSta. 202+65.589
 -L-POTSta. 195+07.567
 OFFSET 0.182 m (L)

ENDWALL

ENDWALL

CHORD

F

F

F

F

56

56A

58

58

59

59A

375

375

CA

RW

CA

RW

RW

CA

RW

CA

RW

RW

193+00

194+00

195+00

196+00