
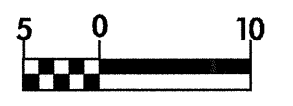
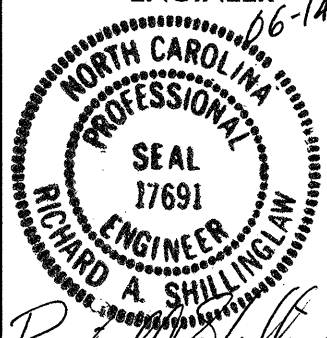
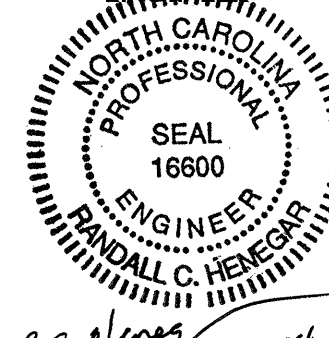
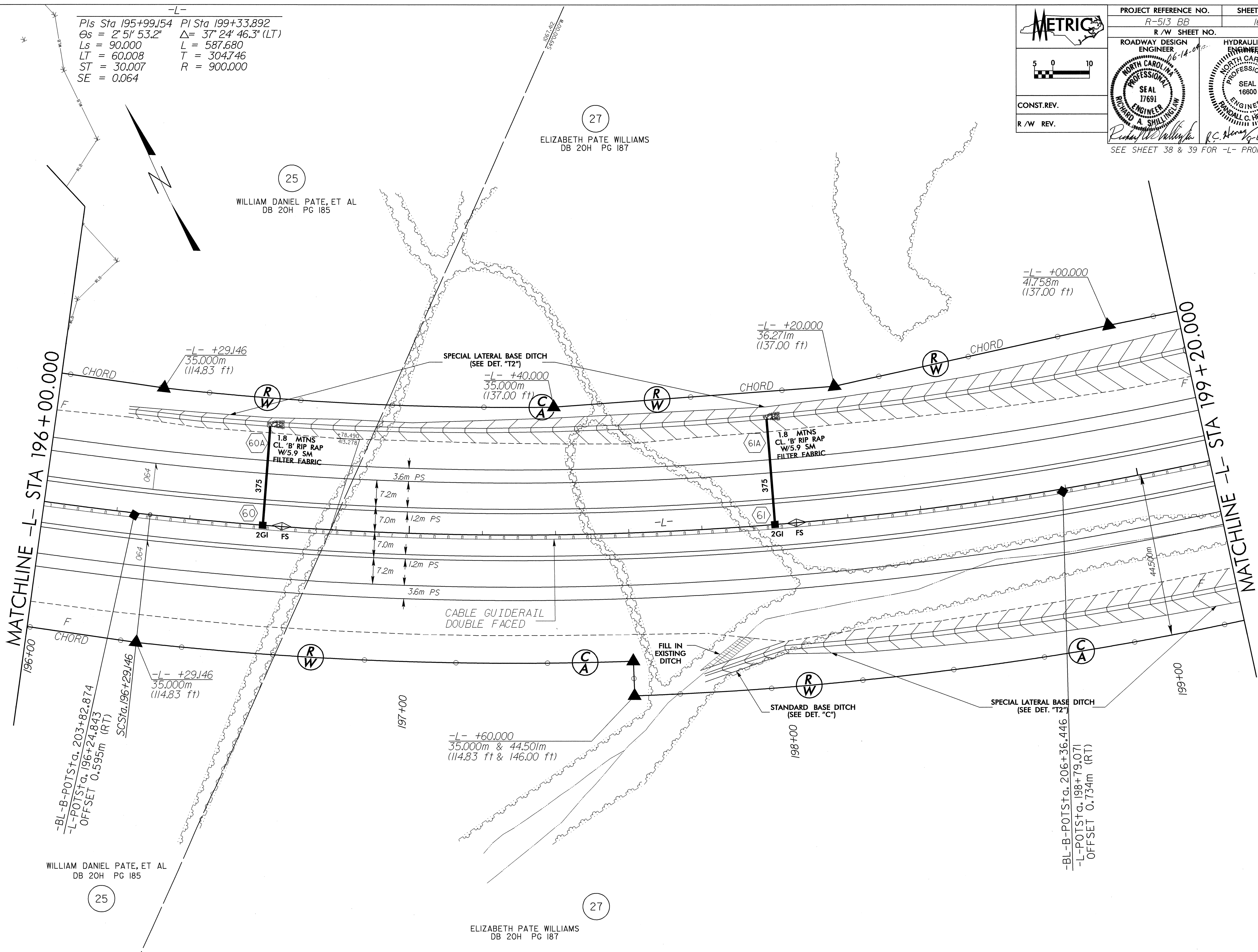


8/17/23

-L-  
 PIs Sta 195+99.154 PI Sta 199+33.892  
 $\Theta_s = 2^\circ 51' 53.2''$   $\Delta = 37^\circ 24' 46.3''$  (LT)  
 $L_s = 90.000$   $L = 587.680$   
 $LT = 60.008$   $T = 304.746$   
 $ST = 30.007$   $R = 900.000$   
 $SE = 0.064$

  CONST. REV. R/W REV.	PROJECT REFERENCE NO. R-513 BB	SHEET NO. 16
	R/W SHEET NO.	
ROADWAY DESIGN ENGINEER 06-14-04 	HYDRAULICS ENGINEER 	
SEE SHEET 38 & 39 FOR -L- PROFILE		



25  
 WILLIAM DANIEL PATE, ET AL  
 DB 20H PG 185

27  
 ELIZABETH PATE WILLIAMS  
 DB 20H PG 187

WILLIAM DANIEL PATE, ET AL  
 DB 20H PG 185

ELIZABETH PATE WILLIAMS  
 DB 20H PG 187

14-JUN-2004 09:00  
 T:\proj\14-181\14-181.dwg  
 T:\proj\14-181\14-181.dwg