

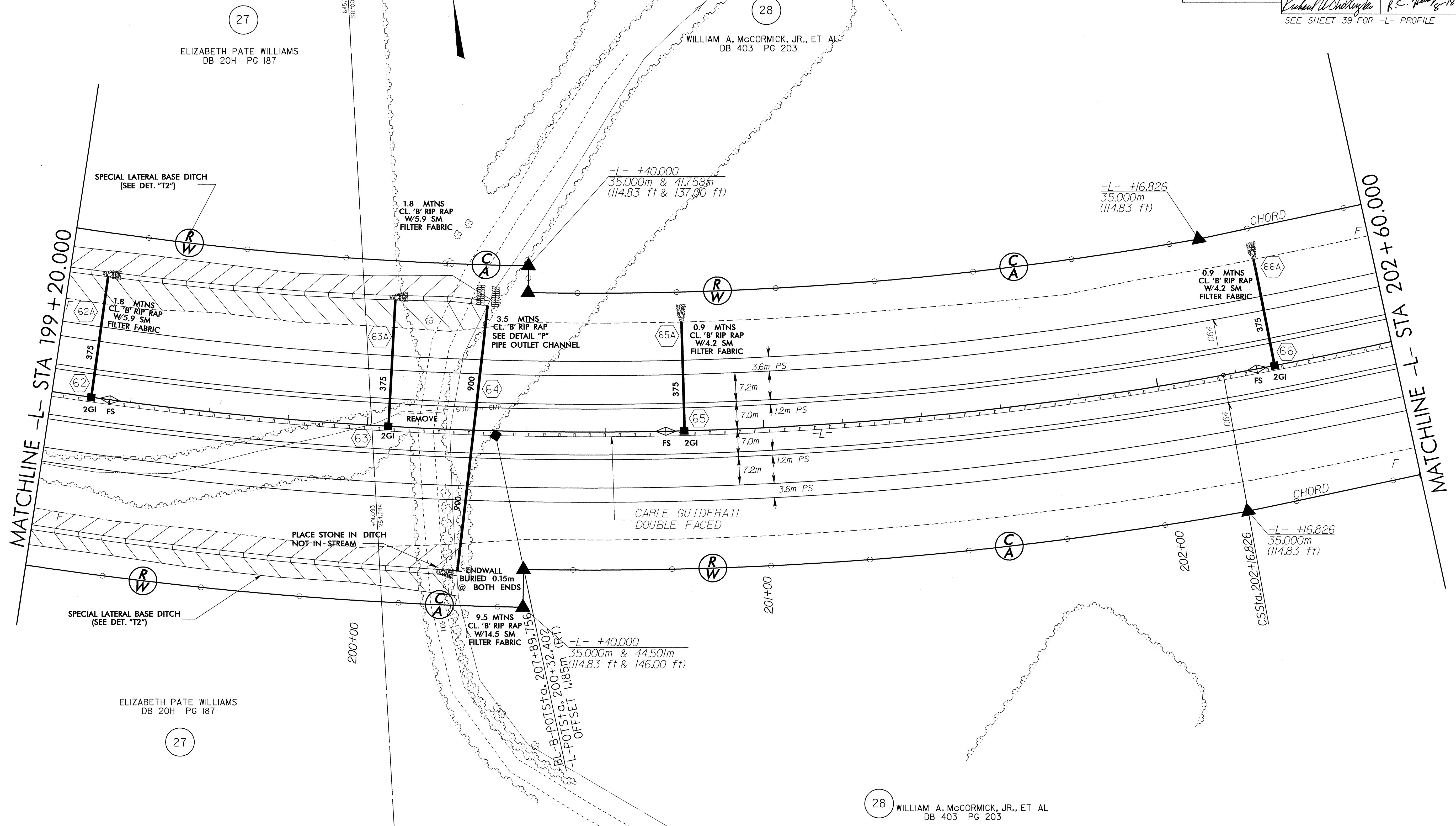
-L-
 PI Sta 199+33.892 PIs Sta 202+46.833
 $\Delta = 37^\circ 24' 46.3" (LT)$ $\Theta_s = 2^\circ 51' 53.2"$
 $L = 587.680$ $L_s = 90.000$
 $T = 304.746$ $LT = 60.008$
 $R = 900.000$ $ST = 30.007$
 $SE = 0.064$

METRIC

5 0 10

CONST. REV.
 R/W REV.

PROJECT REFERENCE NO. R-513 BB	SHEET NO. 17
R/W SHEET NO.	
ROADWAY DESIGN ENGINEER RICHARD A. SHILLING, JR. SEAL 17691	HYDRAULICS ENGINEER RANDALL C. HOBBS SEAL 16800
SEE SHEET 39 FOR -L- PROFILE	



8/17/99
 14-JUN-2004 08:02
 T:\P\201-53-100\201-53-100.dwg
 14-JUN-2004 08:02
 T:\P\201-53-100\201-53-100.dwg