

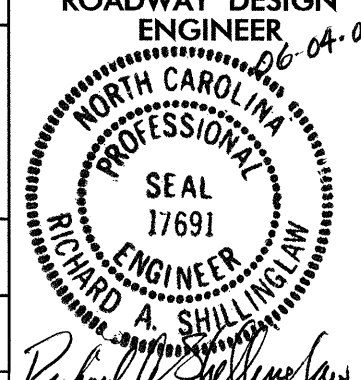
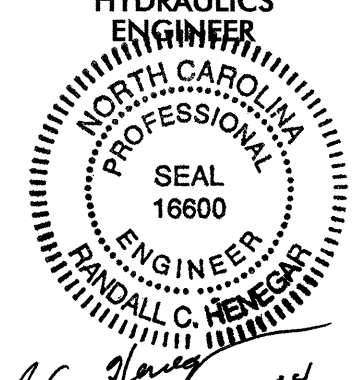
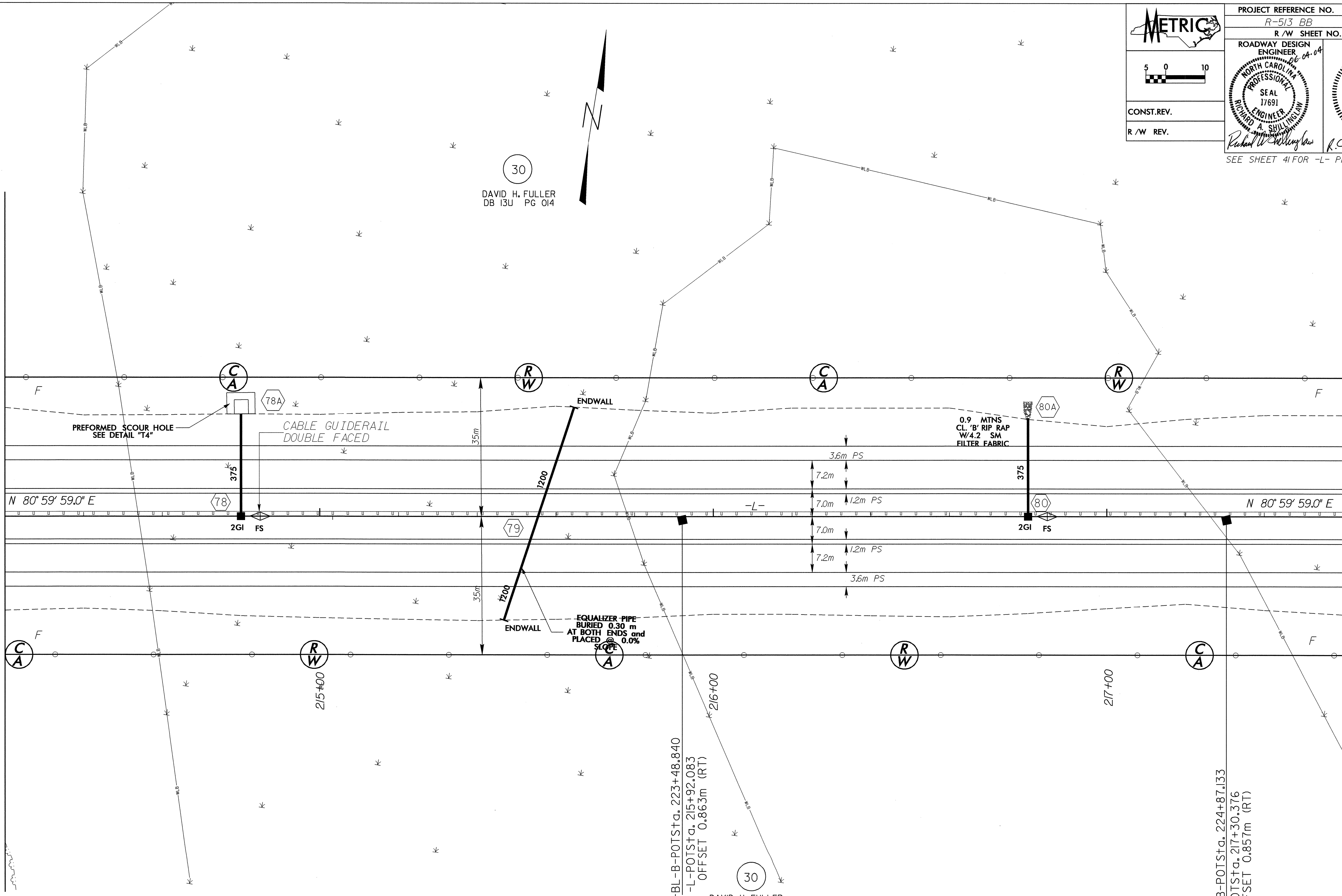


8/17/99

|   |   |                 |
|---|---|-----------------|
| <br> | PROJECT REFERENCE NO.<br>R-513 BB   | SHEET NO.<br>21 |
|   | R/W SHEET NO.   |                 |
| ROADWAY DESIGN ENGINEER<br>DAVID H. FULLER<br>DB 13U PG 014   | HYDRAULICS ENGINEER<br>RICHARD W. WILKINSON<br>DB 04-04                             |                 |
|    |  |                 |
| CONST.REV.  | SEE SHEET 41 FOR -L- PROFILE  |                 |
| R/W REV.  |   |                 |

MATCHLINE -L- STA 214 + 20.000

MATCHLINE -L- STA 217 + 60.000



30  
DAVID H. FULLER  
DB 13U PG 014

30  
DAVID H. FULLER  
DB 13U PG 014

-BL-B-POTSta. 224+87.133  
-L-POTSta. 217+30.376  
OFFSET 0.857m (RT)

-BL-B-POTSta. 223+48.840  
-L-POTSta. 215+92.083  
OFFSET 0.863m (RT)

28 FEB 2004 15:38  
FILED IN 21  
TLS:cmh AT RD203024