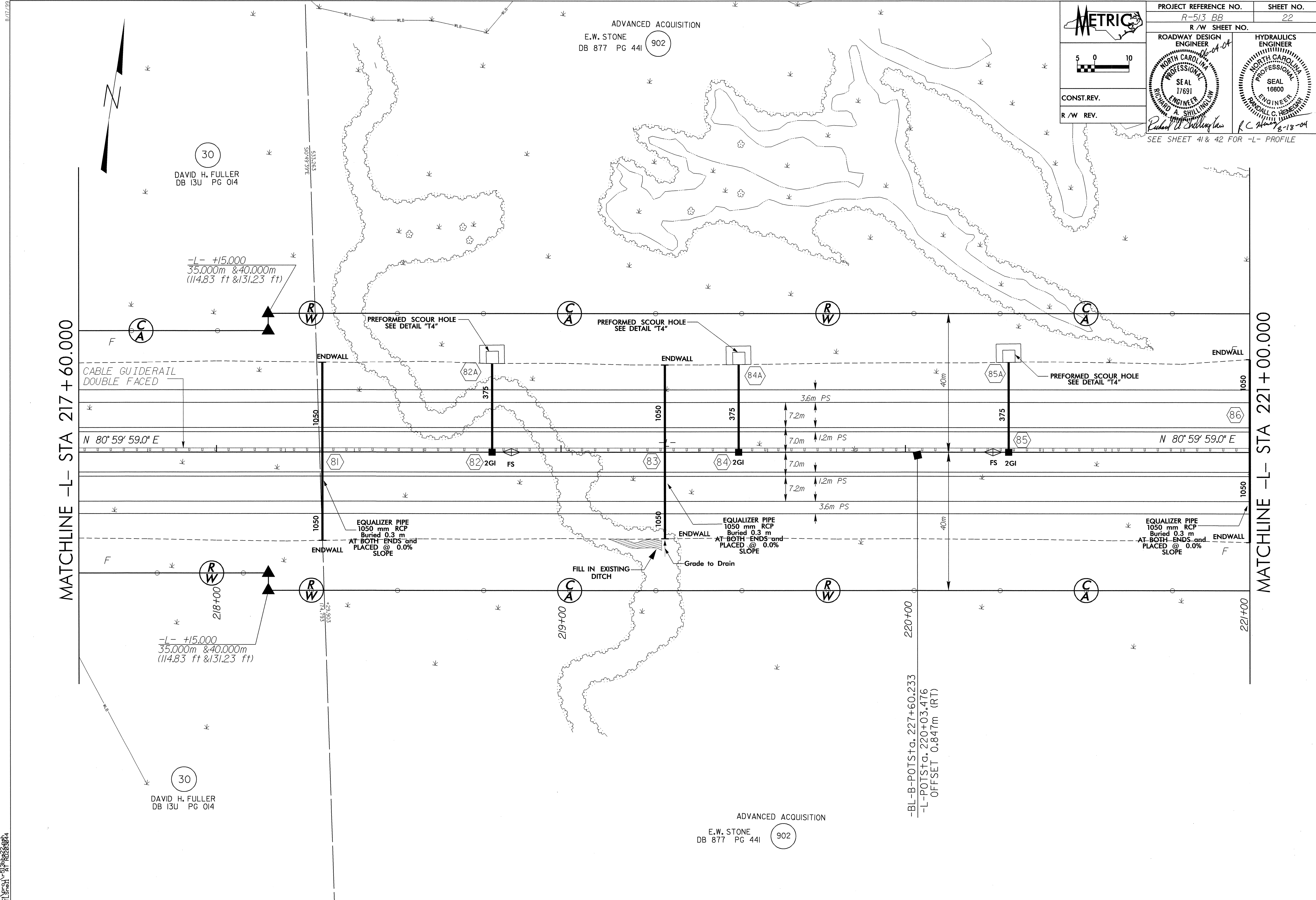
 5 0 10 CONST.REV. R/W REV.	PROJECT REFERENCE NO. R-513_BB	SHEET NO. 22
	R/W SHEET NO.	
ROADWAY DESIGN ENGINEER NORTH CAROLINA PROFESSIONAL ENGINEER SEAL 17691 RICHARD A. SHILLINGTON 12-04	HYDRAULICS ENGINEER NORTH CAROLINA PROFESSIONAL ENGINEER SEAL 16800 RANDALL C. HENEGHAN 12-18-04	
SEE SHEET 41 & 42 FOR -L- PROFILE		



25 FEB 2004 13:38  
 FLS:ash  
 AT 10262884