
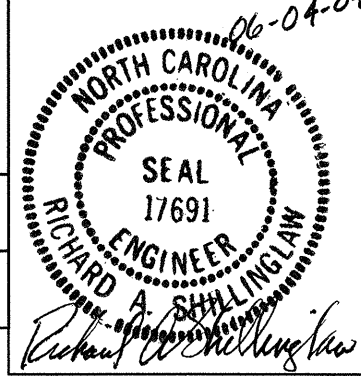
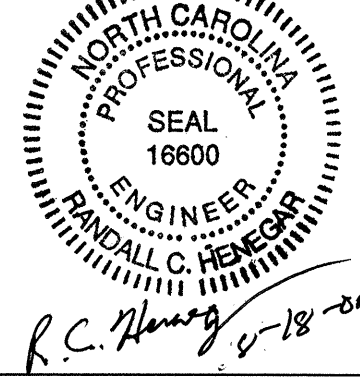
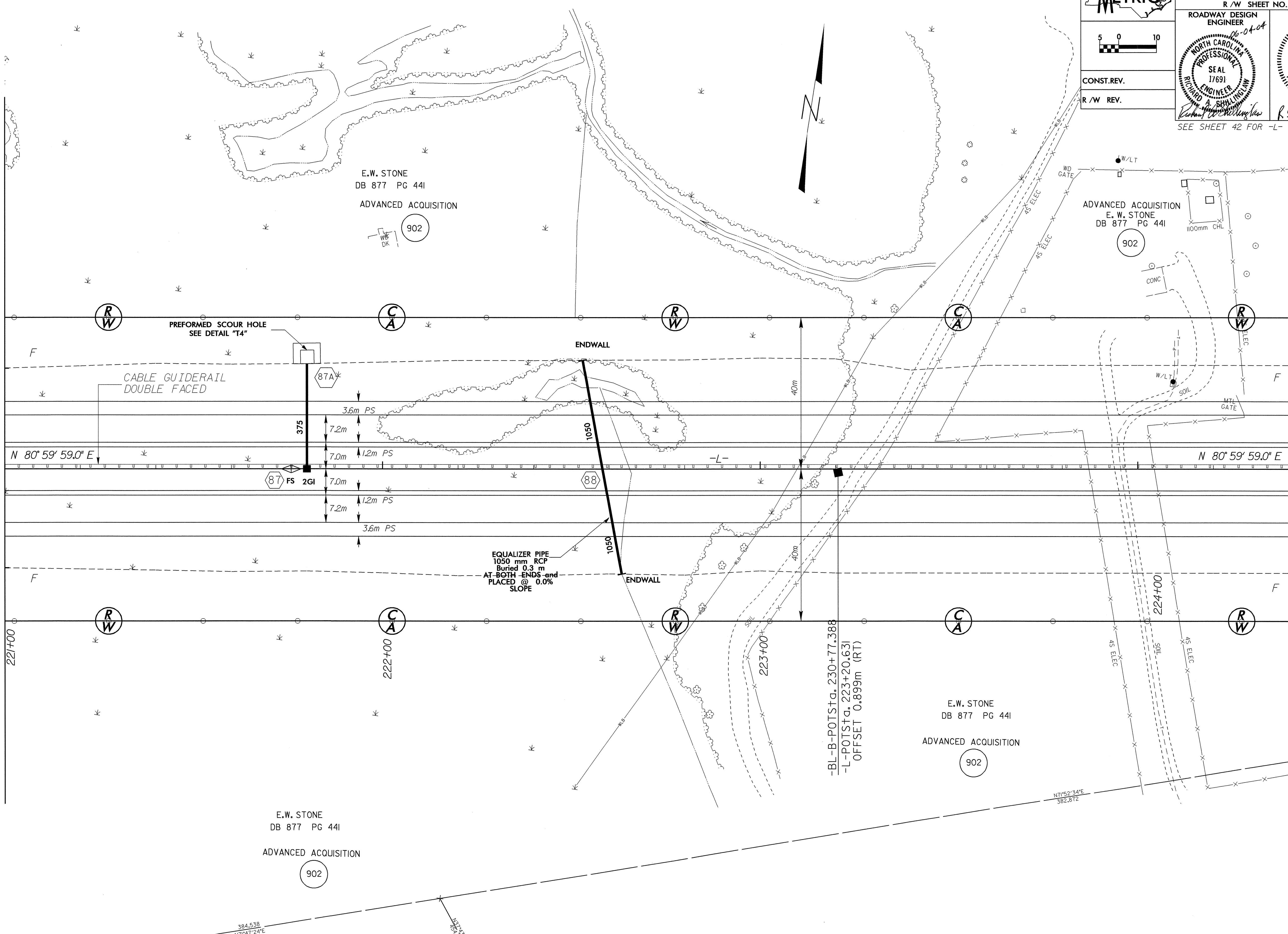


8/17/99

	PROJECT REFERENCE NO.	SHEET NO.
	R-513-BB	23
ROADWAY DESIGN ENGINEER		
HYDRAULICS ENGINEER		
R/W SHEET NO.		
06-04-04		
		
CONST.REV.		R/W REV.
SEE SHEET 42 FOR -L- PROFILE		

MATCHLINE -L- STA 221+00.000

MATCHLINE -L- STA 224+40.000



E.W. STONE
DB 877 PG 441
ADVANCED ACQUISITION
902

ADVANCED ACQUISITION
E.W. STONE
DB 877 PG 441
902

E.W. STONE
DB 877 PG 441
ADVANCED ACQUISITION
902

E.W. STONE
DB 877 PG 441
ADVANCED ACQUISITION
902

-BL-B-POTSta. 230+77.388
-L-POTSta. 223+20.631
OFFSET 0.899m (RT)

23-FEB-2004 15:28
FLS:pat AT RD203044