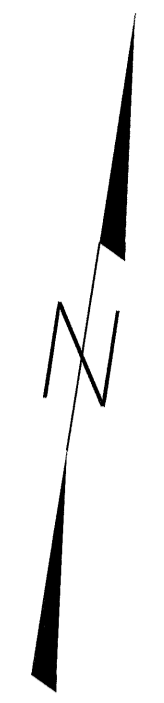
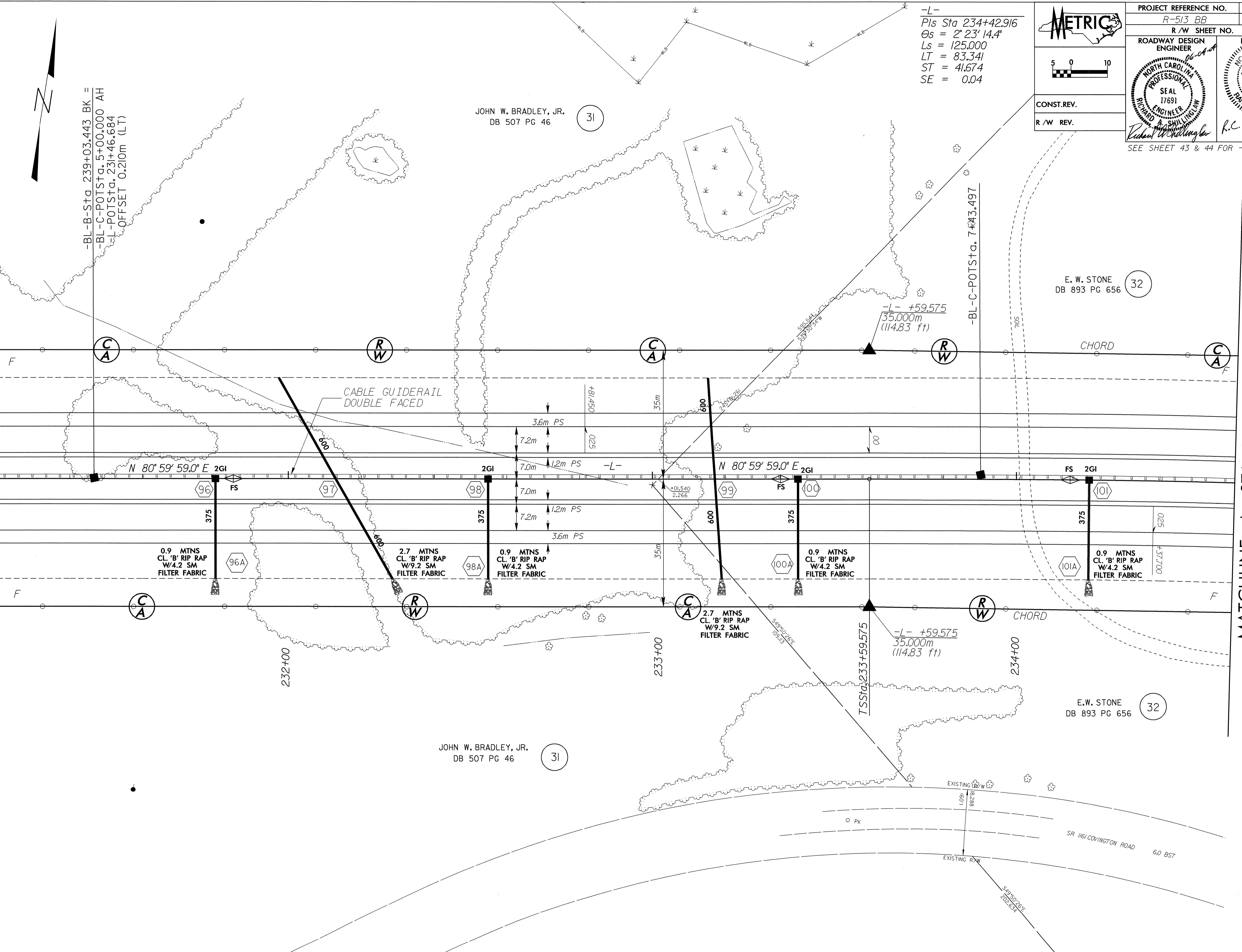


8/17/99

23-FEB-2004 15:39  
FLS:phl AT RD233824

MATCHLINE -L- STA 231+20.000

MATCHLINE -L- STA 234+60.000



-L-  
 PIs Sta 234+42.916  
 $\Theta_s = 2^\circ 23' 14.4''$   
 $L_s = 125.000$   
 $LT = 83.341$   
 $ST = 41.674$   
 $SE = 0.04$

**METRIC**

5 0 10

CONST.REV.  
R/W REV.

PROJECT REFERENCE NO. R-513 BB	SHEET NO. 26
R/W SHEET NO.	
ROADWAY DESIGN ENGINEER	HYDRAULICS ENGINEER
<i>Richard A. Shilling</i>	<i>R.C. Henger</i>
SEAL 17691	SEAL 16600
PROFESSIONAL ENGINEER	PROFESSIONAL ENGINEER
NORTH CAROLINA	NORTH CAROLINA

SEE SHEET 43 & 44 FOR -L- PROFILE

JOHN W. BRADLEY, JR.  
DB 507 PG 46

E. W. STONE  
DB 893 PG 656

JOHN W. BRADLEY, JR.  
DB 507 PG 46

E. W. STONE  
DB 893 PG 656