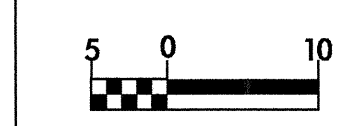
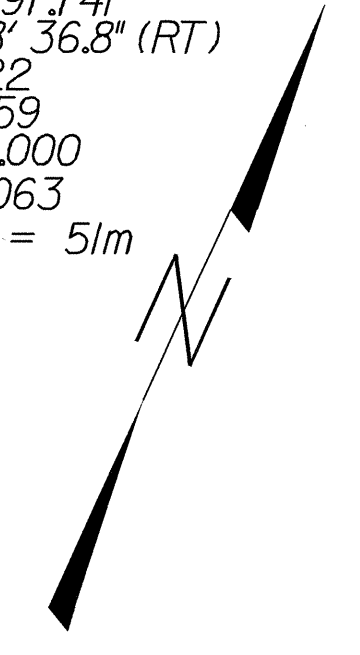


8/17/94

-Y5-  
 PI Sta. 11+97.741  
 $\Delta = 15^\circ 38' 36.8''$  (RT)  
 $L = 191.122$   
 $T = 96.159$   
 $R = 700.000$   
 $SE = 0.063$   
 RUNOFF = 5/m



CONST. REV.  
 R/W REV.

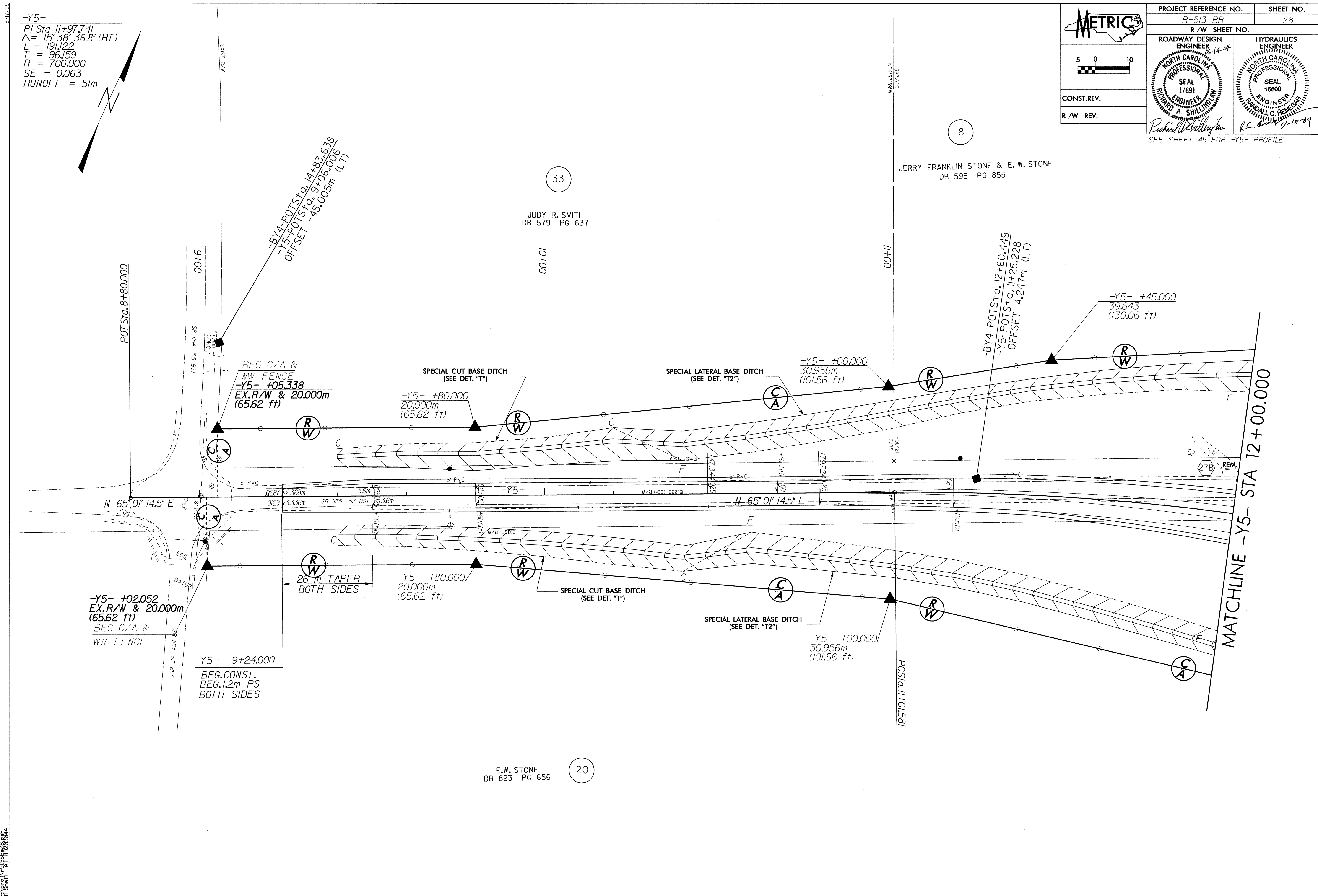
PROJECT REFERENCE NO. R-513 BB	SHEET NO. 28
ROADWAY DESIGN ENGINEER 12-14-04 RICHARD A. SHILLINGTON SEAL 17691	HYDRAULICS ENGINEER RICHARD C. HENEGAR SEAL 16600
SEE SHEET 45 FOR -Y5- PROFILE	

33

JUDY R. SMITH  
 DB 579 PG 637

18

JERRY FRANKLIN STONE & E. W. STONE  
 DB 595 PG 855



E.W. STONE  
 DB 893 PG 656

20

14 JUN 2004 08:02  
 FL 5001 AT 02585824