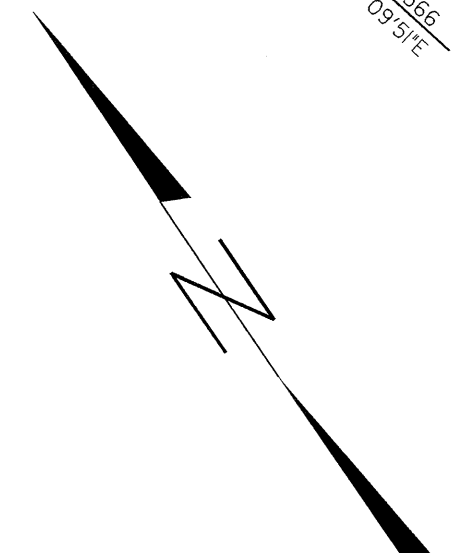


8/17/04



-SR5-
 Pts Sta 34+02.642
 $\theta_s = 3^\circ 36' 34.7''$
 $L_s = 63.000$
 $LT = 42.009$
 $ST = 21.008$
 $SE = 0.076$

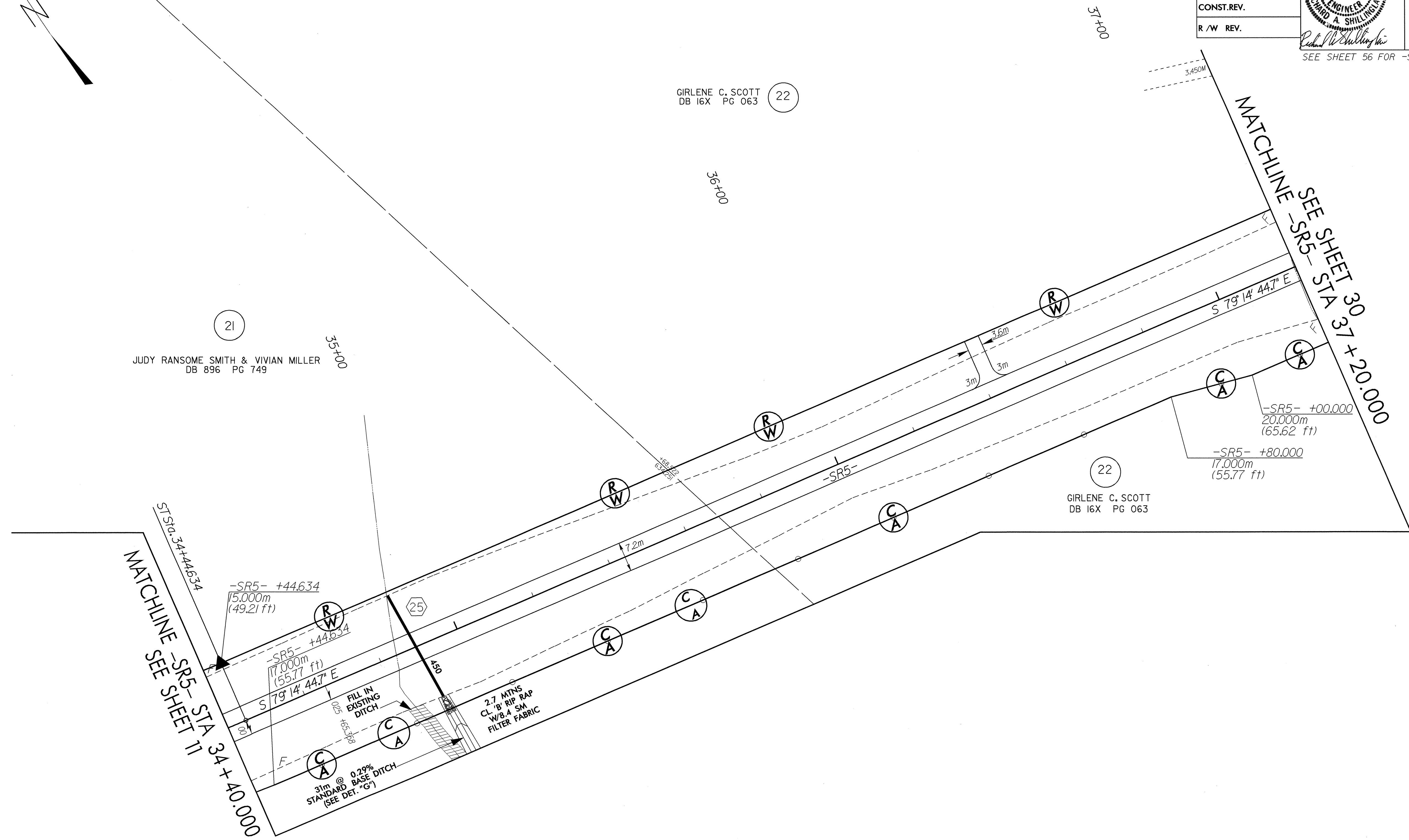
	PROJECT REFERENCE NO.	SHEET NO.
	R-513 BB	29
	R/W SHEET NO.	
	ROADWAY DESIGN ENGINEER	
	HYDRAULICS ENGINEER	
CONST.REV.		
R/W REV.		

SEE SHEET 56 FOR -SR5- PROFILE

21
 JUDY RANSOME SMITH & VIVIAN MILLER
 DB 896 PG 749

22
 GIRLENE C. SCOTT
 DB 16X PG 063

22
 GIRLENE C. SCOTT
 DB 16X PG 063



IC

IC

14-JUN-2004 09:02
 F:\SR5\14-513\SR5\29.dwg
 R:\R262824