
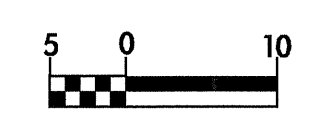
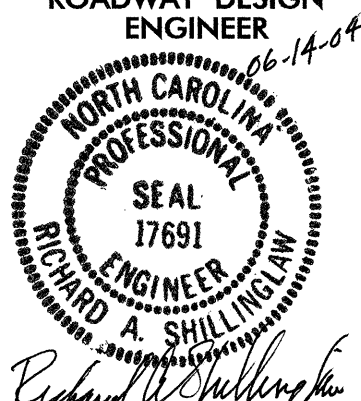
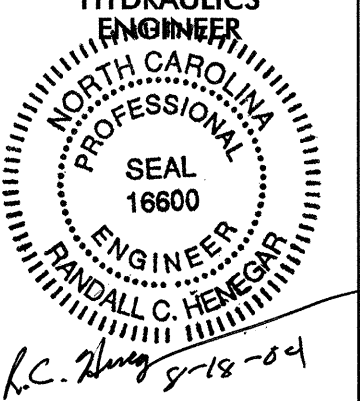


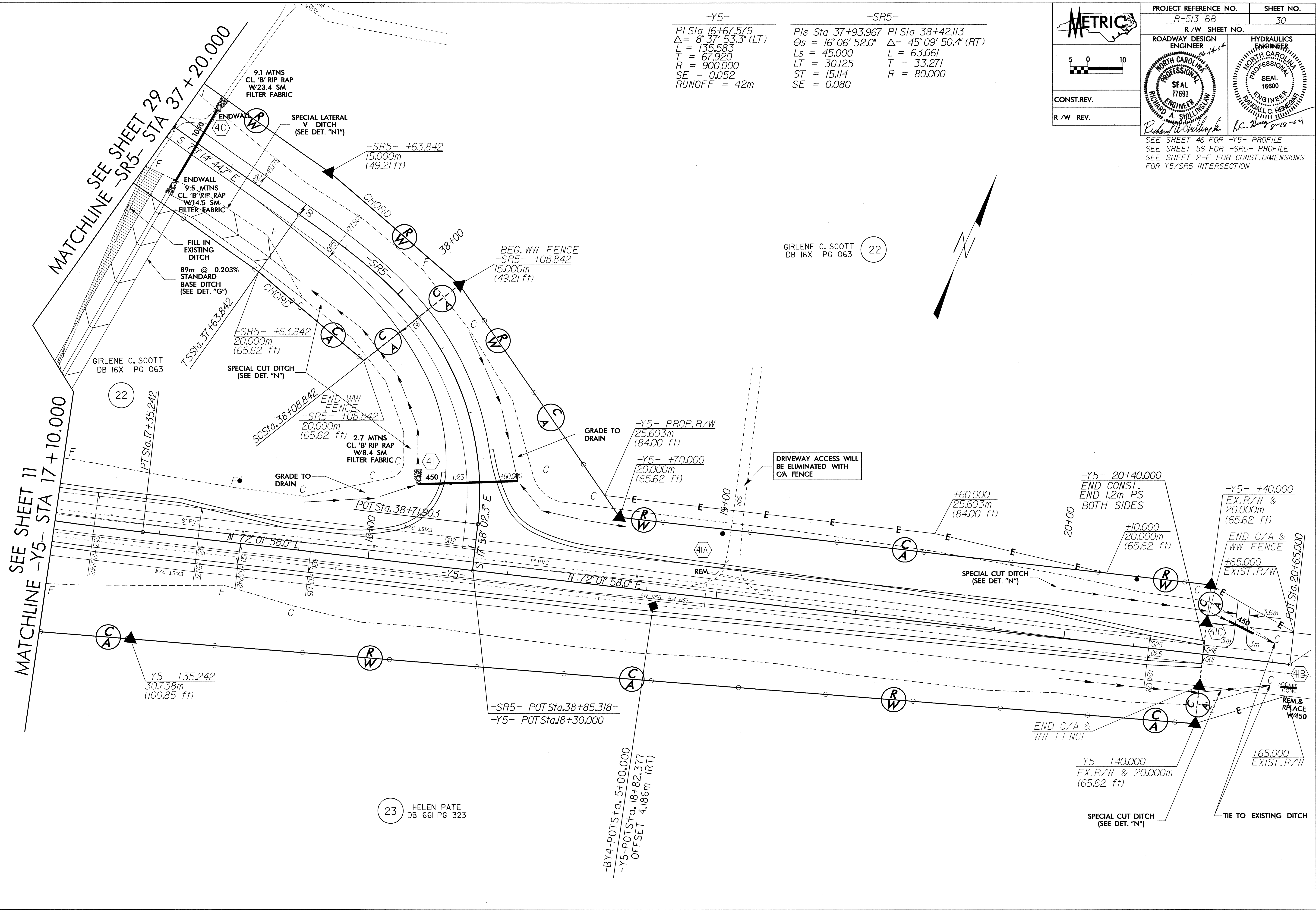
8/17/95

  CONST. REV.	PROJECT REFERENCE NO.	SHEET NO.
	R-513 BB	30
R/W REV.	R/W SHEET NO.	
	ROADWAY DESIGN ENGINEER	HYDRAULICS ENGINEER
	 RICHARD A. SHILLINGFORD	 RANDALL C. HEGER

-Y5-  
 PI Sta 16+67.579  
 $\Delta = 8^{\circ} 37' 53.3''$  (LT)  
 L = 135.583  
 T = 67.920  
 R = 900.000  
 SE = 0.052  
 RUNOFF = 42m

-SR5-  
 Pls Sta 37+93.967 PI Sta 38+42.113  
 $\Theta_s = 16^{\circ} 06' 52.0''$   $\Delta = 45^{\circ} 09' 50.4''$  (RT)  
 Ls = 45.000 L = 63.061  
 LT = 30.125 T = 33.271  
 ST = 15.114 R = 80.000  
 SE = 0.080

SEE SHEET 46 FOR -Y5- PROFILE  
 SEE SHEET 56 FOR -SR5- PROFILE  
 SEE SHEET 2-E FOR CONST. DIMENSIONS  
 FOR Y5/SR5 INTERSECTION



GIRLENE C. SCOTT  
 DB 16X PG 063 (22)

(23) HELEN PATE  
 DB 661 PG 323

-BY4-POT Sta. 5+00.000  
 -Y5-POT Sta. 18+82.377  
 OFFSET 4.186m (RT)

14-JUN-2004 09:02  
 R:\proj\11\3\110228.dwg