



ROADWAY DESIGN ENGINEER 06-24-04

HYDRAULICS ENGINEER SEAL 16600

PROFESSIONAL SEAL 17691

RICHARD A. SHULLINGHAM

RANDALL C. HEMESBA

06-18-04

CONST. REV.  
R / W REV.

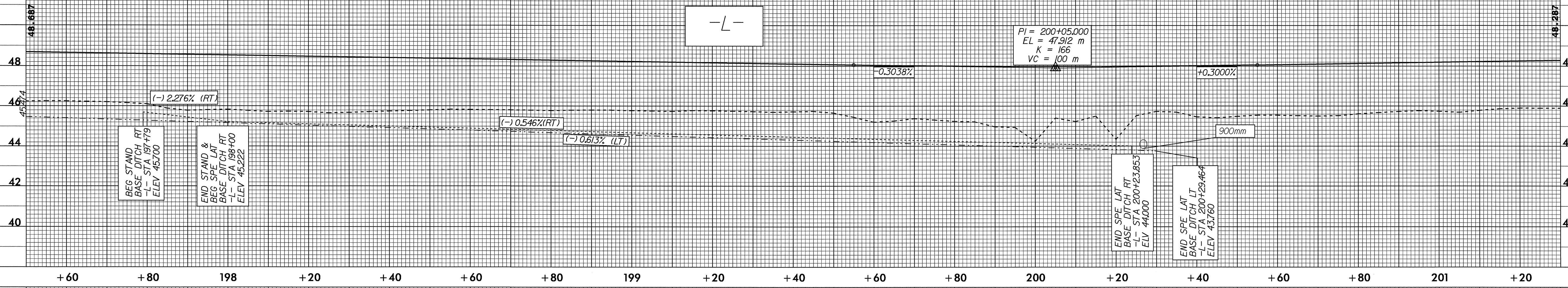
**PIPE HYDRAULIC DATA**  
DRAINAGE STRUCTURE NO.64

DRAINAGE AREA	= 27.013 HA
DESIGN FREQUENCY	= 50 YRS
DESIGN DISCHARGE	= 0.791 CMS
DESIGN HW ELEVATION	= 44.90 M
100 YEAR DISCHARGE	= 0.957 CMS
100 YEAR HW ELEVATION	= 45.16 M
OVERTOPPING FREQUENCY	= 500+ YRS
OVERTOPPING DISCHARGE	= 2.242 CMS
OVERTOPPING ELEVATION	= 48.413 M

BM \* 24 R/R SPIKE IN BASE 200mm PINE 90.303m RT OF  
-L- STA 198+68.908 EL 46.752

-L-

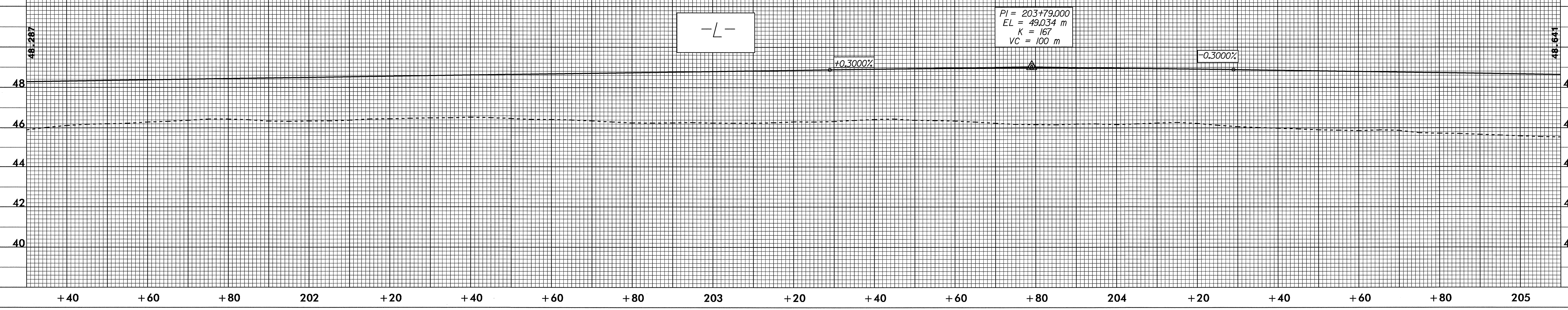
PI = 200+05.000  
EL = 47.912 m  
K = 166  
VC = 100 m



BM \* 25 R/R SPIKE IN BASE 750mm PINE 129.703m LT OF  
-L- STA 201+96.628 EL 46.393

-L-

PI = 203+79.000  
EL = 49.034 m  
K = 167  
VC = 100 m



10/26/08

24-JUN-2004 5:41 PM  
RShillingham AT-R08b71738b4p1